

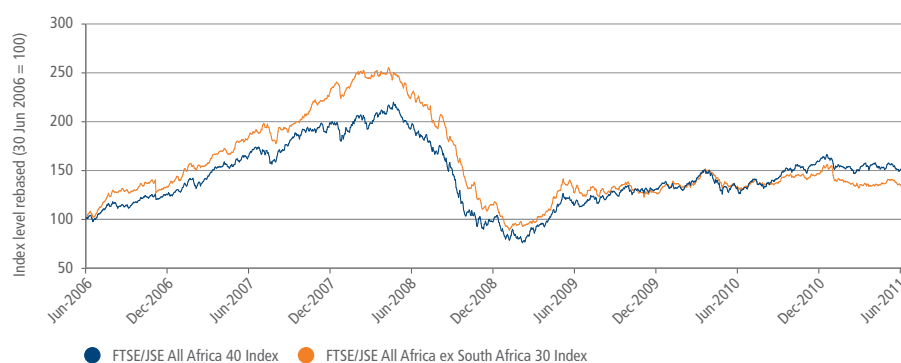
FTSE/JSE ALL AFRICA INDEX SERIES

The FTSE/JSE All Africa Index Series is designed to represent the performance of the top African companies listed on the stock exchanges of qualifying African countries. In order to maintain a diversified basket of stocks, each country is capped at a maximum of 40% of the index. The series provides investors with two comprehensive, replicable and transparent indices that provide a gateway to wider investment opportunities across the African continent.

The series includes:

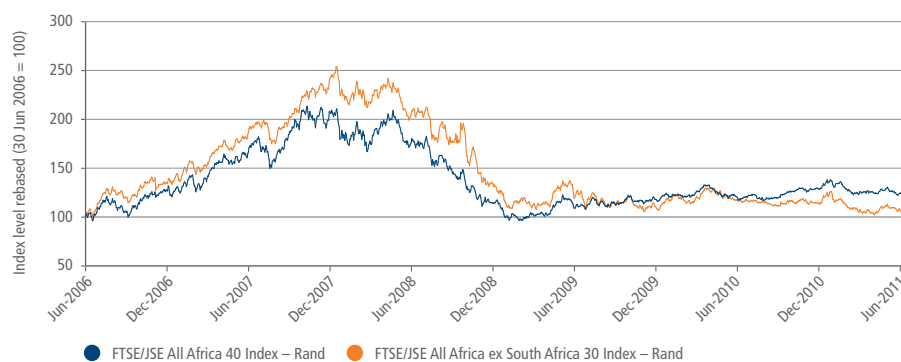
- **FTSE/JSE All Africa 40 Index:** the top 40 largest eligible companies, by market capitalisation, listed on the stock exchanges of qualifying African countries. A maximum of 10 stocks are permitted from South Africa and a maximum of 7 stocks per other qualifying country;
- **FTSE/JSE All Africa ex South Africa 30 Index:** the top 30 largest eligible companies, by market capitalisation, listed on the stock exchanges of qualifying African countries excluding South Africa. A maximum of 7 stocks are permitted per country.

FTSE/JSE ALL AFRICA INDEX SERIES FIVE YEAR PERFORMANCE (USD, TOTAL RETURN)



SOURCE: FTSE Group, data as at 30 June 2011

FTSE/JSE ALL AFRICA INDEX SERIES FIVE YEAR PERFORMANCE (ZAR, TOTAL RETURN)



SOURCE: FTSE Group, data as at 30 June 2011

FEATURES

- The FTSE/JSE All Africa Index series comprises stocks from the following qualifying African countries:
 - Botswana
 - Egypt
 - Ivory Coast
 - Kenya
 - Mauritius
 - Morocco
 - Nigeria
 - South Africa
 - Tunisia
- Capital and total return versions of the index are available
- Stocks are free-float weighted to ensure that only the investable opportunity set is included within the index
- Stocks are liquidity screened to ensure that the index is tradable
- The series is calculated in accordance with the Industry Classification Benchmark, the global standard for industry sector analysis
- The indices are suitable for the creation of financial products, such as index funds, warrants, certificates and Exchange Traded Funds (ETFs)
- The indices are managed according to a transparent and public set of index rules, and overseen by an independent committee of leading market professionals. The committee ensures that the rules are correctly applied and adhered to. Regular index reviews are conducted to ensure that a continuous and accurate representation of the market is maintained

FAMILY TREE



FTSE/JSE ALL AFRICA INDEX SERIES PERFORMANCE AND VOLATILITY TABLE (USD TOTAL RETURN)

	PERFORMANCE								VOLATILITY		
	3M (%)	6M (%)	YTD (%)	12M (%)	3YR (%)	5YR (%)	3YR (%pa)	5YR (%pa)	1YR Vol (%pa)*	3YR Vol (%pa)**	5YR Vol (%pa)***
FTSE/JSE All Africa 40 Index	-0.3	-5.4	-5.4	20.7	-22.3	53.8	-8.1	9.0	13.8	25.1	27.7
FTSE/JSE All Africa ex South Africa 30 Index	0.3	-9.3	-9.3	3.7	-40.7	35.8	-16.0	6.3	11.9	21.7	28.2

* Based on daily annualised total returns using 252 trading days in a year

** Based on weekly annualised total returns using 52 weeks (Wednesday to Wednesday)

*** Based on monthly annualised total returns

SOURCE: FTSE Group, data as at 30 June 2011

FTSE/JSE ALL AFRICA INDEX SERIES COUNTRY BREAKDOWN

Country	FTSE/JSE ALL AFRICA 40 INDEX			FTSE/JSE ALL AFRICA EX SOUTH AFRICA 30 INDEX		
	No. of Constituents	Index Mkt Cap (USDm)	Index Weight (%)	No. of Constituents	Index Mkt Cap (USDm)	Index Weight (%)
Egypt	7	13,048	17.53	7	13,676	30.80
Kenya	5	2,780	3.73	5	2,780	6.26
Mauritius	2	2,182	2.93	2	2,182	4.92
Morocco	7	11,596	15.58	7	11,596	26.12
Nigeria	7	13,775	18.50	7	13,392	30.16
South Africa	10	363,064	40.69	-	-	-
Tunisia	2	771	1.04	2	771	1.74
Totals	40	407,217	100.00	30	44,398	100.00

SOURCE: FTSE Group, data as at 30 June 2011

FTSE/JSE ALL AFRICA INDEX SERIES ICB INDUSTRY BREAKDOWN

ICB Code	ICB Industry	FTSE/JSE ALL AFRICA 40 INDEX			FTSE/JSE ALL AFRICA EX SOUTH AFRICA 30 INDEX		
		No. of Constituents	Index Mkt Cap (USDm)	Index Weight (%)	No. of Constituents	Index Mkt Cap (USDm)	Index Weight (%)
0001	Oil & Gas	1	33,439	3.75	-	-	-
1000	Basic Materials	4	175,450	19.66	1	201	0.45
2000	Industrials	3	5,717	7.68	3	5,717	12.88
3000	Consumer Goods	6	83,306	15.21	3	4,187	9.43
4000	Health Care	-	-	-	-	-	-
5000	Consumer Services	-	-	-	-	-	-
6000	Telecommunications	6	47,258	14.27	5	7,285	16.41
7000	Utilities	-	-	-	-	-	-
8000	Financials	20	62,048	39.43	18	27,007	60.83
9000	Technology	-	-	-	-	-	-
Totals		40	407,217	100.00	30	44,398	100.00

SOURCE: FTSE Group, data as at 30 June 2011

FTSE/JSE ALL AFRICA INDEX SERIES PORTFOLIO CHARACTERISTICS

	FTSE/JSE All Africa 40 Index	FTSE/JSE All Africa ex South Africa 30 Index
Number of Constituents	40	30
Net Market Cap (USDm)	407,217	44,398
Constituent Sizes (Index Market Cap USDm)		
Average	10,180	1,480
Largest	84,859	4,649
Smallest	253	201
Median	1,712	1,186
Weight of largest constituent (%)	2.50	3.33
Top 10 Holdings (% Index Market Cap)	89.16	62.69

SOURCE: FTSE Group, data as at 30 June 2011

INFORMATION
Index Universe

FTSE Frontiers base universe, plus stocks from the FTSE Global Equity Index Series listed in Egypt, Morocco and South Africa

Index Launch

6 October 2008

Base Date

29 August 2008

Base Value

100

Investability Screen

Free float adjusted and liquidity screened

Index Calculation

Real-time and end-of-day indices available. Real-time index calculated every 15 seconds

End-of-Day Distribution

Indices available at 00:30 hours GMT via FTP and email

Currency

Euro, Sterling, US Dollars, Yen, South African Rand

Review Dates

Reviewed quarterly in March, June, September and December

Index Rules

www.ftse.com/jse

Vendor Codes

www.ftse.com/jse

© FTSE International Limited ("FTSE") 2011. All rights in the FTSE/JSE All Africa Index Series vest in FTSE International Limited ("FTSE") and JSE Limited ("JSE"). "FTSE®" is a trademark of the London Stock Exchange Plc and The Financial Times Limited and is used by FTSE under licence. "JSE" is a trade mark of JSE Limited. Neither FTSE nor JSE shall be liable (including in negligence) for any loss arising out of use of the FTSE/JSE All Africa Index Series by any person. All information is provided for information purposes only and no responsibility or liability can be accepted by FTSE or JSE for any errors or for any loss from use of this publication. All rights, including copyright, in this report shall vest in FTSE. No part of this publication may be reproduced, stored in a retrieval system or transmitted by any other form or means whether electronic, mechanical, photocopying, recording or otherwise without the prior written consent of FTSE. Distribution of FTSE index values and the use of FTSE indices to create financial products requires a licence from FTSE and/or its licensors.

FOR FURTHER INFORMATION VISIT WWW.FTSE.COM, EMAIL INFO@FTSE.COM OR CALL YOUR LOCAL FTSE OFFICE:

BEIJING +86 (10) 8587 7722 DUBAI +971 4 319 9901 HONG KONG +852 2164 3333 LONDON +44 (0) 20 7866 1810

MILAN +39 02 3604 6953 MUMBAI +91 22 6649 4180 NEW YORK (DOMESTIC TOLL-FREE) + 1 888 FTSE (3873)

PARIS +33 (0)1 53 76 82 89 SAN FRANCISCO +1 888 747 FTSE (3873) SYDNEY +61 (2) 9293 2864 TOKYO +81 (3) 3581 2811

