

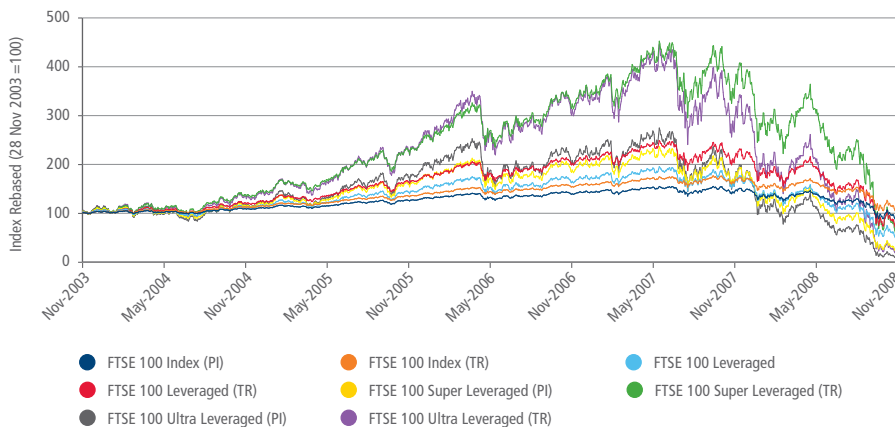
FTSE LEVERAGED INDICES

FTSE is launching a new series of leveraged indices on the UK FTSE 100 and FTSE 250 Indices. These new indices consist of a leveraged index with x2 gearing, a super leveraged index with x3 gearing and an ultra leveraged index with x4 gearing. The new indices allow money managers to exploit the volatility in markets by allowing investors to gear up, and take into account the cost of financing the leveraged positions. The new indices are an extension of FTSE's range of investment strategy indices, which are designed to help clients develop strategic investment tools that provide them with alpha returns relative to a standard market cap weighted benchmark.

FEATURES

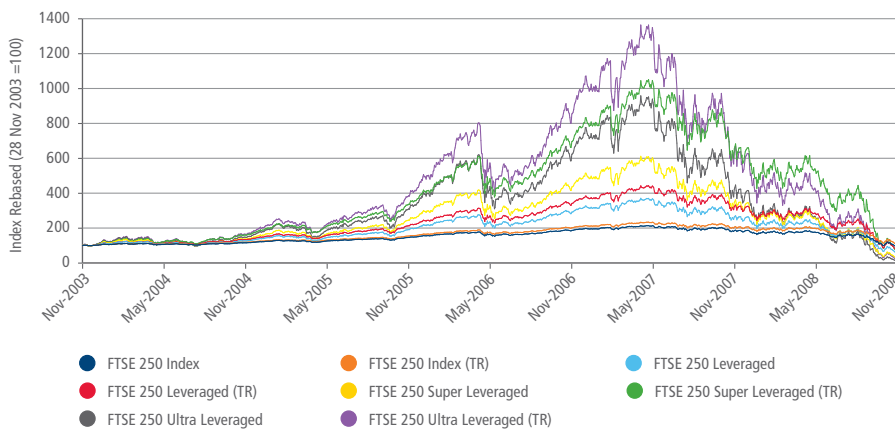
- These indices represent an active management strategy wrapped in an index with the advantages of passive management: high capacity, transparency and easy implementation
- These new indices consist of a leveraged index with x2 gearing, a super leveraged index with x3 gearing and an ultra leveraged index with x4 gearing
- The indices can serve as benchmarks for the creation of ETFs, structured products or other passive investment vehicles that enable investors to gain exposure to the market or hedge portfolio exposure

FTSE 100 LEVERAGED INDICES 5-YEAR PERFORMANCE (GBP)



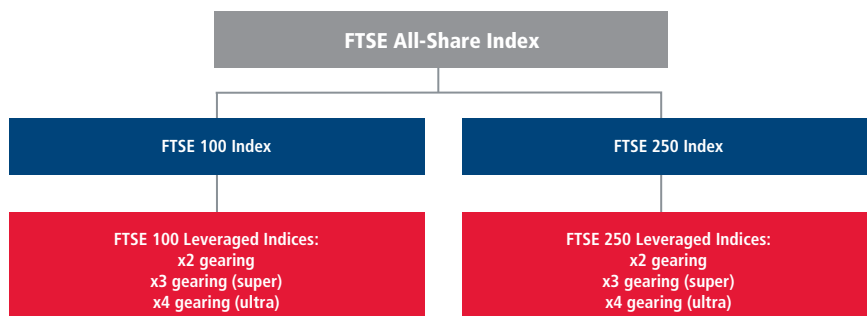
Source: FTSE Group, data as at 28 November 2008

FTSE 250 LEVERAGED INDICES 5-YEAR PERFORMANCE (GBP)



Source: FTSE Group, data as at 28 November 2008

FTSE LEVERAGED INDICES FAMILY TREE



FTSE 100 LEVERAGED INDICES PERFORMANCE (GBP)

Performance	FTSE 100 Index	FTSE 100 Index(TR)	FTSE 100 Leveraged	FTSE 100 Leveraged(TR)	FTSE 100 Super Leveraged	FTSE 100 Super Leveraged(TR)	FTSE 100 Ultra Leveraged	FTSE 100 Ultra Leveraged(TR)
Value	99.09	118.51	63.25	90.52	32.97	86.70	13.94	28.63
1M (%)	-2.0	-1.4	-6.4	-5.1	-12.5	-10.2	-20.0	-17.6
3M (%)	-23.9	-23.1	-47.9	-46.8	-67.7	-65.9	-81.9	-81.1
6M (%)	-29.2	-27.6	-55.9	-54.0	-75.4	-72.6	-87.8	-86.7
YTD (%)	-33.6	-30.8	-63.0	-59.8	-82.1	-77.9	-92.4	-91.1
12M (%)	-33.3	-30.5	-63.0	-59.8	-82.2	-77.8	-92.6	-91.2
3YR	-20.9	-5.4	-55.1	-44.1	-78.7	-61.2	-91.7	-87.1
5YR	-1.3	17.9	-37.1	-10.3	-67.3	-14.5	-86.2	-71.8
3YR (%pa)	-7.5	-1.8	-23.4	-17.6	-40.3	-27.1	-56.4	-49.5
5YR (%pa)	-0.3	3.3	-8.9	-2.2	-20.0	-3.1	-32.7	-22.4

Source: FTSE Group, data as at 28 November 2008

FTSE 250 LEVERAGED INDICES PERFORMANCE (GBP)

Performance	FTSE 250 Index	FTSE 250 Index(TR)	FTSE 250 Leveraged	FTSE 250 Leveraged(TR)	FTSE 250 Super Leveraged	FTSE 250 Super Leveraged(TR)	FTSE 250 Ultra Leveraged	FTSE 250 Ultra Leveraged(TR)
Value	108.06	124.06	76.18	100.43	44.65	103.81	21.65	37.66
1M (%)	-3.0	-2.8	-7.4	-7.0	-12.9	-11.9	-19.1	-18.3
3M (%)	-35.1	-34.5	-60.6	-59.9	-77.5	-76.4	-88.0	-87.5
6M (%)	-39.4	-38.3	-66.6	-65.4	-83.0	-81.3	-92.0	-91.4
YTD (%)	-42.8	-41.0	-71.7	-69.8	-87.4	-84.9	-94.9	-94.2
12M (%)	-43.3	-41.4	-72.4	-70.5	-87.9	-85.4	-95.3	-94.6
3YR	-26.8	-20.7	-60.8	-53.9	-82.2	-70.2	-93.1	-90.5
5YR	6.7	22.1	-25.3	-2.0	-56.4	-0.3	-78.9	-63.7
3YR (%pa)	-9.9	-7.4	-26.8	-22.8	-43.7	-33.2	-59.1	-54.4
5YR (%pa)	1.3	4.1	-5.7	-0.4	-15.3	-0.1	-26.7	-18.4

Source: FTSE Group, data as at 28 November 2008

FTSE 100 LEVERAGED INDICES VOLATILITY

Volatility (%)	FTSE 100 Index	FTSE 100 Index(TR)	FTSE 100 Leveraged	FTSE 100 Leveraged(TR)	FTSE 100 Super Leveraged	FTSE 100 Super Leveraged(TR)	FTSE 100 Ultra Leveraged	FTSE 100 Ultra Leveraged(TR)
Volatility 1 Yr	36%	36%	73%	73%	110%	110%	149%	148%
Volatility 3 Yr	15%	15%	33%	33%	52%	53%	75%	76%
Volatility 5 Yr	13%	13%	27%	27%	44%	44%	63%	63%

Source: FTSE Group, data as at 28 November 2008

FTSE 250 LEVERAGED INDICES VOLATILITY

Volatility (%)	FTSE 250 Index	FTSE 250 Index(TR)	FTSE 250 Leveraged	FTSE 250 Leveraged(TR)	FTSE 250 Super Leveraged	FTSE 250 Super Leveraged(TR)	FTSE 250 Ultra Leveraged	FTSE 250 Ultra Leveraged(TR)
1YR	36%	36%	73%	73%	110%	110%	149%	148%
3YR	202%	202%	207%	207%	214%	214%	224%	224%
5YR	199%	199%	204%	204%	210%	210%	219%	219%

Source: FTSE Group, data as at 28 November 2008

FTSE 100 LEVERAGED INDICES BETA

	FTSE 100 Index	FTSE 100 Index(TR)	FTSE 100 Leveraged	FTSE 100 Leveraged(TR)	FTSE 100 Super Leveraged	FTSE 100 Super Leveraged(TR)	FTSE 100 Ultra Leveraged	FTSE 100 Ultra Leveraged(TR)
Beta 1 YR								
FTSE 100	1.000	1.000	0.499	0.499	0.330	0.330	0.245	0.245
FTSE 100 TRI		1.000	0.498	0.499	0.330	0.330	0.245	0.245
Beta 3 YR								
FTSE 100	1.000	0.993	0.465	0.463	0.286	0.285	0.197	0.196
FTSE 100 TRI		1.000	0.467	0.466	0.287	0.287	0.197	0.197
Beta 5 YR								
FTSE 100	1.000	0.996	0.467	0.466	0.289	0.289	0.200	0.199
FTSE 100 TRI		1.000	0.467	0.468	0.289	0.290	0.200	0.200
Correlation 1 Yr								
FTSE 100	1.000	1.000	1.000	0.999	0.998	0.998	0.996	0.996
FTSE 100 TRI		1.000	0.999	1.000	0.998	0.998	0.996	0.996
Correlation 3 Yr								
FTSE 100	1.000	0.998	0.997	0.996	0.989	0.988	0.977	0.977
FTSE 100 TRI		1.000	0.995	0.997	0.987	0.989	0.975	0.977
Correlation 5 Yr								
FTSE 100	1.000	0.998	0.997	0.996	0.990	0.988	0.978	0.978
FTSE 100 TRI		1.000	0.995	0.997	0.987	0.989	0.976	0.978

Source: FTSE Group, data as at 28 November 2008

FTSE 250 LEVERAGED INDICES BETA

	FTSE 250 Index	FTSE 250 Index(TR)	FTSE 250 Leveraged	FTSE 250 Leveraged(TR)	FTSE 250 Super Leveraged	FTSE 250 Super Leveraged(TR)	FTSE 250 Ultra Leveraged	FTSE 250 Ultra Leveraged(TR)
Beta 1 YR								
FTSE 250	1.000	1.000	0.499	0.499	0.330	0.330	0.245	0.245
FTSE 250 TRI		1.000	0.498	0.499	0.330	0.330	0.245	0.245
Beta 3 YR								
FTSE 250	1.000	1.000	0.974	0.974	0.925	0.925	0.856	0.856
FTSE 250 TRI		1.000	0.974	0.974	0.925	0.925	0.856	0.856
Beta 5 YR								
FTSE 250	1.000	1.000	0.974	0.973	0.931	0.931	0.872	0.873
FTSE 250 TRI		1.000	0.974	0.974	0.931	0.931	0.873	0.873
Correlation 1 Yr								
FTSE 250	1.000	1.000	1.000	0.999	0.998	0.998	0.996	0.996
FTSE 250 TRI		1.000	0.999	1.000	0.998	0.998	0.996	0.996
Correlation 3 Yr								
FTSE 250	1.000	1.000	0.994	0.994	0.976	0.976	0.946	0.946
FTSE 250 TRI		1.000	0.994	0.994	0.976	0.976	0.945	0.946
Correlation 5 Yr								
FTSE 250	1.000	1.000	0.996	0.996	0.982	0.982	0.959	0.960
FTSE 250 TRI		1.000	0.995	0.996	0.982	0.982	0.959	0.960

Source: FTSE Group, data as at 28 November 2008

INFORMATION

Index Universe

FTSE 100 and FTSE 250 Indices

Index Launch

16 December 2008

Base Date

31 December 1992

Base Value – FTSE 100 Index

x2 gearing – 10,000

x3 gearing – 10,000

x4 gearing – 10,000

Base Value – FTSE 250 Index

x2 gearing – 10,000

x3 gearing – 10,000

x4 gearing – 10,000

Index Calculation

End-of-Day only

End-of-Day Distribution

Index available at 20:00 GMT or BST via FTP and email

Currency

GBP

Overnight Interest Rate

SONIA (Sterling Overnight Interbank Average Rate)

© FTSE International Limited ("FTSE") 2009. All rights reserved. "FTSE®", "FT-SE®" and "Footsie®" are trade marks jointly owned by the London Stock Exchange Plc and The Financial Times Limited and are used by FTSE under licence. The FTSE indices referred to within this document ("Indices") are calculated by FTSE. All know-how, copyright and database rights in the Indices vest in FTSE and/or its licensors. All information is provided for information purposes only. No responsibility or liability is accepted by FTSE for any errors, loss or liability arising from the use of this publication. Distribution of FTSE index values and the use of the FTSE Indices to create financial products require a licence from FTSE.

FOR FURTHER INFORMATION VISIT WWW.FTSE.COM, EMAIL INFO@FTSE.COM OR CALL YOUR LOCAL FTSE OFFICE:
 LONDON +44 (0) 20 7866 1810 BOSTON +1 888 747 FTSE (3873) FRANKFURT +49 (0) 69 156 85 144 HONG KONG +852 2230 5800
 BEIJING + 86 10 5864 5277 MADRID +34 91 411 3787 NEW YORK +1 888 747 FTSE (3873)
 PARIS +33 (0) 1 53 76 82 88 SAN FRANCISCO +1 888 747 FTSE (3873) SYDNEY +61 2 9293 2866 TOKYO +81 3 3581 2811

FTSE
THE INDEX COMPANY