

FTSE Asia Research May 2009

Jamie Perrett
Head of Quantitative Research
jamie.perrett@ftse.com
+852 2230 5816

Frank Kang, Ph.D., ASA
Senior Quantitative Research
Manager
Asia Pacific
frank.kang@ftse.com
+852 2230 5833

Betty Ma, CFA
Quantitative Research Manager
Asia Pacific
betty.ma@ftse.com
+852 2230 5836

*The FTSE Asian Property Index
was the best performing sector
in May up 27.14 per cent*

*The worst performing sector in
May was the FTSE Asian
Personal & Household Goods
Index up 8.19 per cent*

Index Series Overview

The FTSE Asian Sector Index Series has been created as the first comprehensive range of tradable indices for the Asian Equity markets. The FTSE Asian Sector Index Series follows a sector investment approach, dividing eligible companies into 18 pan-regional sector indices, as defined by the Industry Classification Benchmark (ICB).

Using FTSE's Asian sector-based indices provides investors with:

- A basis for the creation of structured products, index funds, and ETFs
- Transparent and cost-efficient ways to add or reduce exposure in specific sectors
- A building block approach for an asset allocation in Asian sectors
- An effective tool to implement strategies such as sector rotation & long/short on sectors to exploit the investment opportunity in Asian sectors
- A consistent and tradable performance benchmark across Asian sectors for both passive and active investors

Index Name	FTSE	Bloomberg	Reuters
FTSE Asian Autos & Trucks Index	ASAT	FASAT	<.FTASAT>
FTSE Asian Banks Index	ASBA	FASBA	<.FTASBA>
FTSE Asian Basic Resources Index	ASBR	FASBR	<.FTASBR>
FTSE Asian Chemicals Index	ASCH	FASCH	<.FTASCH>
FTSE Asian Construction & Materials Index	ASCM	FASCM	<.FTASCM>
FTSE Asian Financial Services Index	ASFS	FASFS	<.FTASFS>
FTSE Asian Food & Beverage Index	ASBE	FASBE	<.FTASBE>
FTSE Asian Industrial Goods & Services Index	ASIG	FASIG	<.FTASIG>
FTSE Asian Marine Transportation Index	ASMT	FASMT	<.FTASMT>
FTSE Asian Oil & Gas Index	ASOG	FASOG	<.FTASOG>
FTSE Asian Personal & Household Goods Index	ASPH	FASPH	<.FTASPH>
FTSE Asian Property Index	ASPR	FASPR	<.FTASPR>
FTSE Asian Retail Index	ASRE	FASRE	<.FTASRE>
FTSE Asian Technology Index	ASTE	FASTE	<.FTASTE>
FTSE Asian Telecommunications Index	ASTC	FASTEL	<.FTASTC>
FTSE Asian Travel, Leisure & Media Index	ASTL	FASTL	<.FTASTL>
FTSE Asian Utilities Index	ASUT	FASUT	<.FTASUT>

FTSE Asian Sector Index Series Performance (%)

Index Name	No. of Cons.	1M	3M	6M	YTD	2008	2007	2006	2005	2004
FTSE Asian Autos & Trucks Index	30	12.39	76.58	89.06	60.75	-61.27	28.03	8.71	48.84	6.42
FTSE Asian Banks Index	30	19.54	52.98	34.30	27.66	-50.05	18.63	35.06	23.57	15.49
FTSE Asian Basic Resources Index	30	26.66	83.89	89.47	55.00	-68.51	123.55	60.55	-6.29	21.05
FTSE Asian Chemicals Index	15	8.35	56.28	46.92	40.99	-54.28	73.78	24.98	15.61	6.13
FTSE Asian Construction & Materials Index	30	19.15	74.81	70.67	42.26	-62.24	94.45	51.88	32.82	22.76
FTSE Asian Financial Services Index	30	20.17	68.93	65.26	38.50	-53.36	49.80	52.09	2.65	18.32
FTSE Asian Food & Beverage Index	25	11.85	40.95	40.90	27.43	-52.26	51.09	37.42	23.02	16.41
FTSE Asian Industrial Goods & Services Index	30	22.06	60.39	64.27	49.51	-60.40	70.31	31.30	20.40	29.25
FTSE Asian Marine Transportation Index	10	26.64	69.46	63.92	34.72	-60.43	100.29	11.99	-3.90	-
FTSE Asian Oil & Gas Index	20	20.40	63.22	55.98	41.41	-56.28	67.73	38.18	22.79	26.79
FTSE Asian Personal & Household Goods Index	30	8.19	39.92	40.75	31.82	-39.36	27.31	18.17	25.15	14.45
FTSE Asian Property Index	30	27.14	71.38	62.12	49.64	-58.06	57.96	39.79	14.03	33.90
FTSE Asian Retail Index	10	12.63	37.18	32.18	11.46	-58.27	29.20	21.78	37.58	-
FTSE Asian Technology Index	30	10.23	53.19	54.37	45.97	-51.17	2.38	15.83	28.88	6.55
FTSE Asian Telecommunications Index	26	8.48	25.52	15.64	7.16	-41.65	40.91	48.29	9.66	18.45
FTSE Asian Travel, Leisure & Media Index	30	15.86	41.97	31.50	22.11	-50.44	26.68	34.46	9.47	13.04
FTSE Asian Utilities Index	25	9.14	21.76	22.63	17.39	-36.92	34.44	21.62	10.75	17.28

Source: FTSE Group / USD price performance - data as at 29th May 2009

FTSE ASIAN SECTOR INDEX SERIES

FTSE Asian Autos & Trucks Index - May 2009



Index Overview

FTSE Asian Auto & Trucks Index consists of manufacturers and distributors of commercial or passenger vehicles, motorcycles, heavy agricultural and construction machinery. It also includes companies that provides commercial trucking services and manufacturers of new and replacement parts for motorcycles and retreaders of automobiles, truck and motorcycle tires.

Historical Performance (%)

Index Name	No of Cons	1M	3M	6M	YTD	2008	2007	2006	2005	2004	12M Div Yld
FTSE Asian Autos & Trucks Index	30	12.39	76.58	89.06	60.75	-61.27	28.03	8.71	48.84	6.42	2.07
FTSE Asia Pacific ex Japan Index	-	14.67	51.30	43.25	31.22	-53.24	35.85	29.67	17.11	19.79	3.72

Historical Volatility (%)

Source: FTSE Group / USD price performance - data as at 29th May 2009

Index Name	1M	3M	6M	YTD	2008	2007	2006	2005	2004
FTSE Asian Autos & Trucks Index	36.09	41.22	47.18	45.06	49.59	23.60	19.91	16.05	22.20
FTSE Asia Pacific ex Japan Index	29.12	31.42	33.34	31.93	40.26	21.62	14.55	10.32	14.95

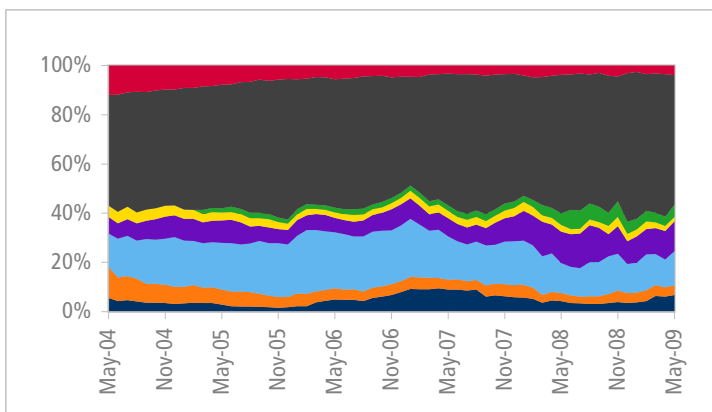
Top 5 Constituents by Index Weighting

Rank	Constituent Name	Country	Sub sector	Wgt in Index (%)
1	Hyundai Motor	South Korea	Automobiles	12.82
2	Hyundai Heavy Industries	South Korea	Commercial Vehicles & Trucks	12.36
3	Hyundai Mobis	South Korea	Auto Parts	8.70
4	Astra International	Indonesia	Auto Parts	8.63
5	Samsung Heavy Industries	South Korea	Commercial Vehicles & Trucks	7.82

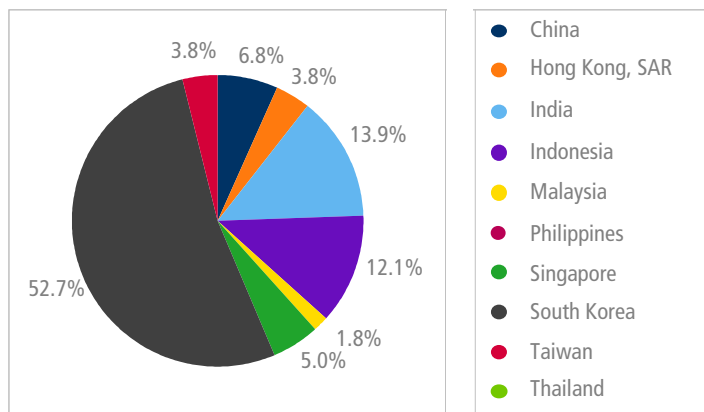
Vendor Codes

FTSE	ASAT
Bloomberg	FASAT
Reuters	<FTASAT>

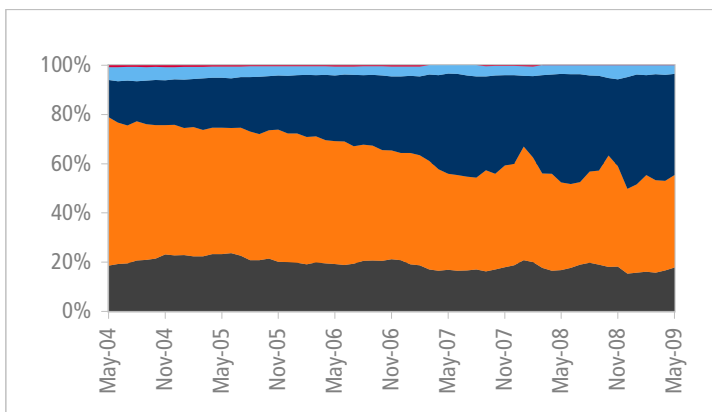
5 Year Historical Country Weightings Breakdown



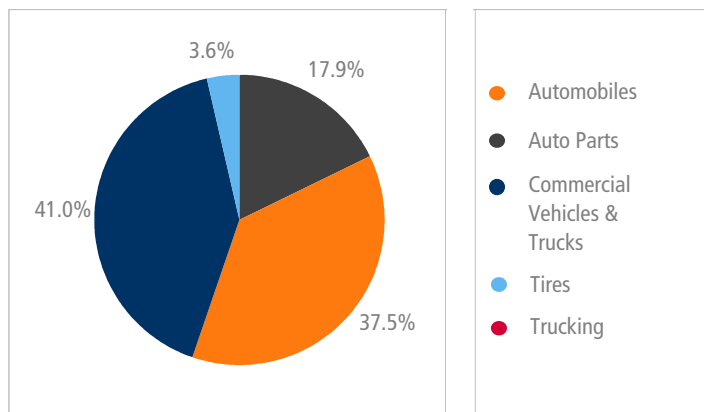
Country Weightings Breakdown - May 2009



5 Year Historical Sub Sector Weightings Breakdown



Sub Sector Weightings Breakdown - May 2009



Source: FTSE Group - data as at 29th May 2009

FOR FURTHER INFORMATION VISIT WWW.FTSE.COM, EMAIL INFO@FTSE.COM OR CALL YOUR LOCAL FTSE OFFICE:
 BOSTON: +1 888 747 FTSE (3873) CHINA (NORTH): 10800 852 1727 CHINA (SOUTH): 10800 152 1727
 FRANKFURT: +49 (0)69 156 85 144 HONG KONG: +852 2230 5800 LONDON: +44 (0)20 7866 1810
 MADRID: +34 91 411 3787 MALAYSIA: 1800 812 116 NEW YORK: +1 888 747 FTSE (3873) PARIS: +33 (0)1 53 76 82 88
 SAN FRANCISCO: +1 888 747 FTSE(3873) SINGAPORE: 800 8523 654 SYDNEY: 1800 653 680 TAIWAN: 0080 185 6152
 THAILAND: 001 800 852 5111 TOKYO: +81 3 3581 2811



FTSE ASIAN SECTOR INDEX SERIES

FTSE Asian Banks Index - May 2009

Index Overview

FTSE Asian Banks Index consists of banks providing a broad range of financial services, including retail banking, loans and money transmissions.

Historical Performance (%)

Index Name	No of Cons	1M	3M	6M	YTD	2008	2007	2006	2005	2004	12M Div Yld
FTSE Asian Banks Index	30	19.54	52.98	34.30	27.66	-50.05	18.63	35.06	23.57	15.49	3.82
FTSE Asia Pacific ex Japan Index	-	14.67	51.30	43.25	31.22	-53.24	35.85	29.67	17.11	19.79	3.72

Historical Volatility (%)

Source: FTSE Group / USD price performance - data as at 29th May 2009

Index Name	1M	3M	6M	YTD	2008	2007	2006	2005	2004
FTSE Asian Banks Index	37.48	41.45	39.54	39.73	41.70	22.51	15.96	11.90	15.64
FTSE Asia Pacific ex Japan Index	29.12	31.42	33.34	31.93	40.26	21.62	14.55	10.32	14.95

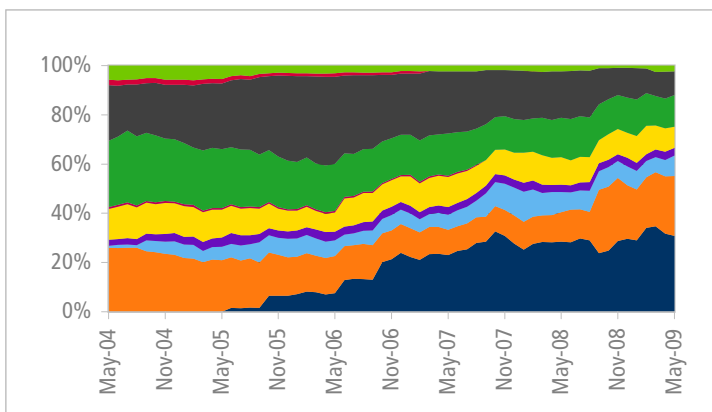
Top 5 Constituents by Index Weighting

Rank	Constituent Name	Country	Sub sector	Wgt in Index (%)
1	HSBC Holdings	Hong Kong, SAR	Banks	16.04
2	ICBC (H)	China	Banks	9.03
3	Bank of China (H)	China	Banks	8.84
4	China Construction Bank (H)	China	Banks	6.56
5	DBS Group Holdings	Singapore	Banks	4.83

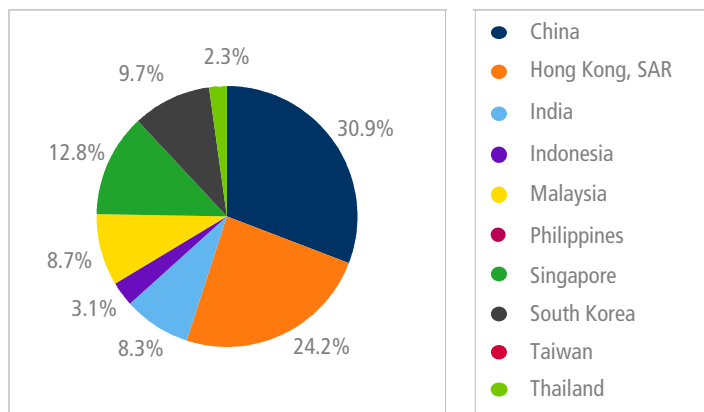
Vendor Codes

FTSE	ASBA
Bloomberg	FASBA
Reuters	<.FTASBA>

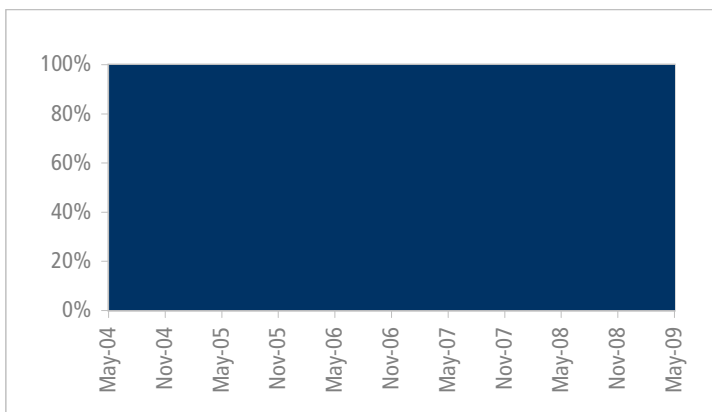
5 Year Historical Country Weightings Breakdown



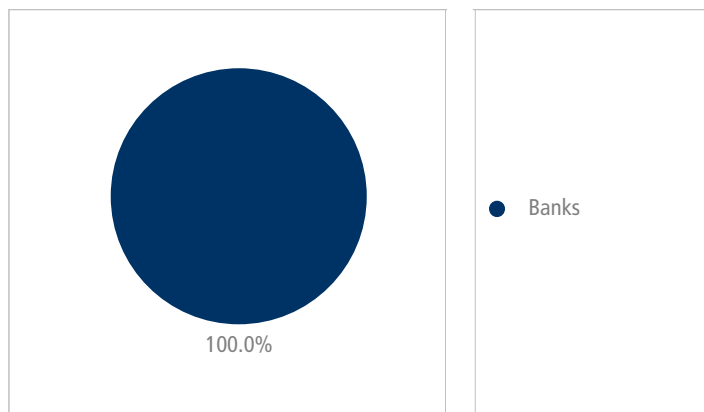
Country Weightings Breakdown - May 2009



5 Year Historical Sub Sector Weightings Breakdown



Sub Sector Weightings Breakdown - May 2009



Source: FTSE Group - data as at 29th May 2009

FTSE ASIAN SECTOR INDEX SERIES

FTSE Asian Basic Resources Index - May 2009

Index Overview

FTSE Asian Basic Resources Index consists of companies engaged in forestry & paper sectors, manufacturer and traders of industrial metals such as, aluminium, steel and nonferrous metals. It also includes companies engaged in the exploration for or mining of coal, diamonds, gold or other precious metals.

Historical Performance (%)

Index Name	No of Cons	1M	3M	6M	YTD	2008	2007	2006	2005	2004	12M Div Yld
FTSE Asian Basic Resources Index	30	26.66	83.89	89.47	55.00	-68.51	123.55	60.55	-6.29	21.05	3.46
FTSE Asia Pacific ex Japan Index	-	14.67	51.30	43.25	31.22	-53.24	35.85	29.67	17.11	19.79	3.72

Historical Volatility (%)

Source: FTSE Group / USD price performance - data as at 29th May 2009

Index Name	1M	3M	6M	YTD	2008	2007	2006	2005	2004
FTSE Asian Basic Resources Index	41.71	43.65	48.00	45.38	56.02	32.57	24.78	16.15	26.42
FTSE Asia Pacific ex Japan Index	29.12	31.42	33.34	31.93	40.26	21.62	14.55	10.32	14.95

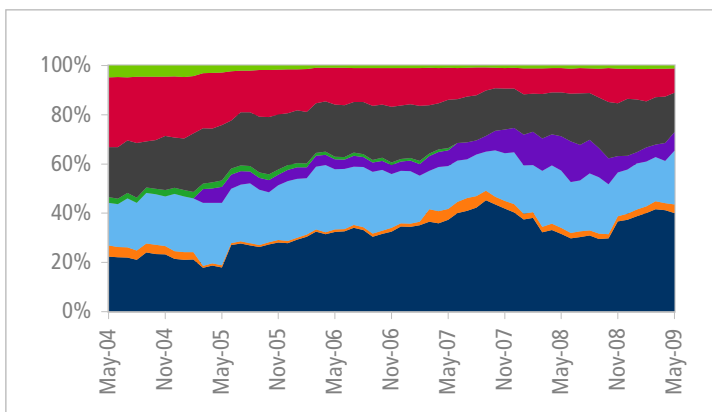
Top 5 Constituents by Index Weighting

Rank	Constituent Name	Country	Sub sector	Wgt in Index (%)
1	China Shenhua Energy (H)	China	Coal	13.76
2	Posco	South Korea	Steel	12.32
3	China Steel	Taiwan	Steel	9.77
4	China Coal Energy (H)	China	Coal	5.96
5	Tata Steel	India	Steel	5.70

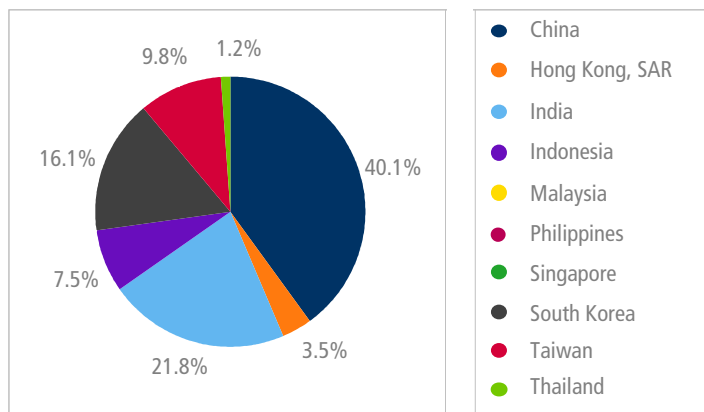
Vendor Codes

FTSE	ASBR
Bloomberg	FASBR
Reuters	<.FTASBR>

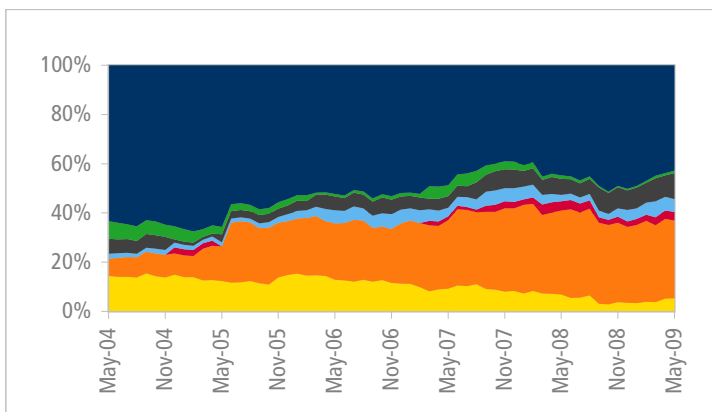
5 Year Historical Country Weightings Breakdown



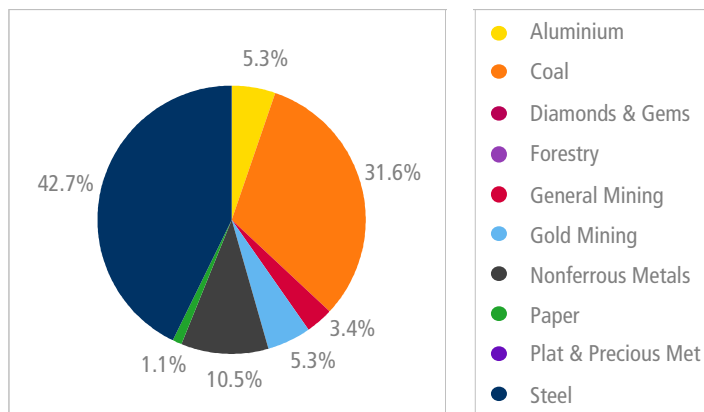
Country Weightings Breakdown - May 2009



5 Year Historical Sub Sector Weightings Breakdown



Sub Sector Weightings Breakdown - May 2009



Source: FTSE Group - data as at 29th May 2009

FTSE ASIAN SECTOR INDEX SERIES

FTSE Asian Chemicals Index - May 2009

Index Overview

FTSE Asian Chemicals Index consists of producers and distributors of commodity chemicals and specialty chemicals. Commodity chemicals are simple chemical products that are primarily used to formulate more complex chemicals and specialty chemical are those finished chemicals for industries or end users.

Historical Performance (%)

Index Name	No of Cons	1M	3M	6M	YTD	2008	2007	2006	2005	2004	12M Div Yld
FTSE Asian Chemicals Index	15	8.35	56.28	46.92	40.99	-54.28	73.78	24.98	15.61	6.13	6.57
FTSE Asia Pacific ex Japan Index	-	14.67	51.30	43.25	31.22	-53.24	35.85	29.67	17.11	19.79	3.72

Historical Volatility (%)

Source: FTSE Group / USD price performance - data as at 29th May 2009

Index Name	1M	3M	6M	YTD	2008	2007	2006	2005	2004
FTSE Asian Chemicals Index	31.06	34.27	32.81	32.99	36.94	21.71	16.67	11.65	22.99
FTSE Asia Pacific ex Japan Index	29.12	31.42	33.34	31.93	40.26	21.62	14.55	10.32	14.95

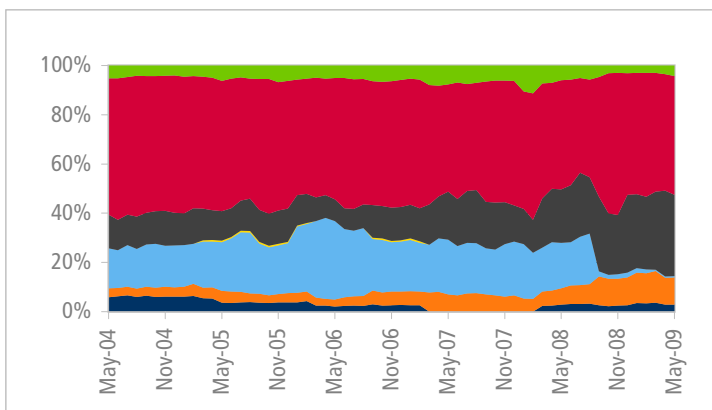
Top 5 Constituents by Index Weighting

Rank	Constituent Name	Country	Sub sector	Wgt in Index (%)
1	LG Chemical	South Korea	Commodity Chemicals	16.39
2	Formosa Chemicals & Fibre	Taiwan	Commodity Chemicals	14.90
3	Nan Ya Plastics	Taiwan	Commodity Chemicals	13.61
4	Formosa Plastics Corp	Taiwan	Commodity Chemicals	13.35
5	DC Chemical	South Korea	Commodity Chemicals	9.10

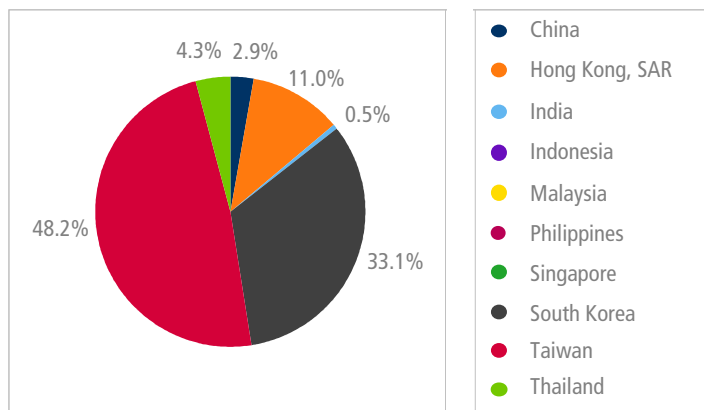
Vendor Codes

FTSE	ASCH
Bloomberg	FASCH
Reuters	<.FTASCH>

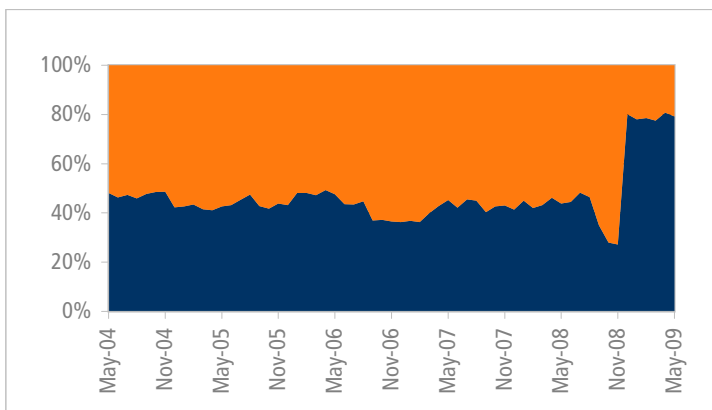
5 Year Historical Country Weightings Breakdown



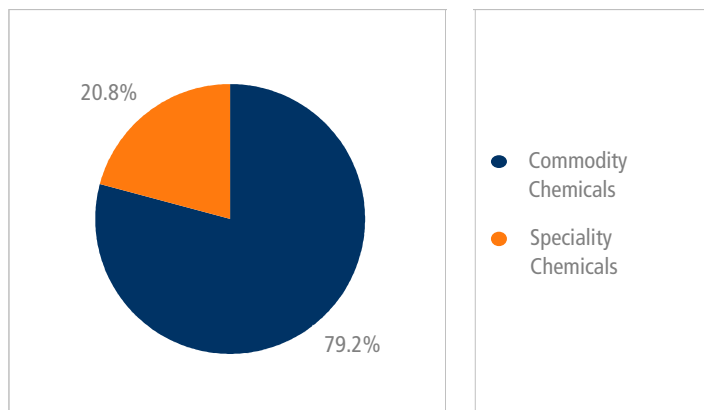
Country Weightings Breakdown - May 2009



5 Year Historical Sub Sector Weightings Breakdown



Sub Sector Weightings Breakdown - May 2009



Source: FTSE Group - data as at 29th May 2009

FTSE ASIAN SECTOR INDEX SERIES

FTSE Asian Construction & Materials Index - May 2009



Index Overview

FTSE Asian Construction & Materials Index consists of producers of materials used in the construction and refurbishment of buildings and structures and also companies engaged in the construction of commercial buildings and infrastructure.

Historical Performance (%)

Index Name	No of Cons	1M	3M	6M	YTD	2008	2007	2006	2005	2004	12M Div Yld
FTSE Asian Construction & Materials Index	30	19.15	74.81	70.67	42.26	-62.24	94.45	51.88	32.82	22.76	1.28
FTSE Asia Pacific ex Japan Index	-	14.67	51.30	43.25	31.22	-53.24	35.85	29.67	17.11	19.79	3.72

Historical Volatility (%)

Source: FTSE Group / USD price performance - data as at 29th May 2009

Index Name	1M	3M	6M	YTD	2008	2007	2006	2005	2004
FTSE Asian Construction & Materials Index	37.45	38.08	40.39	39.02	51.13	27.03	24.59	13.83	19.45
FTSE Asia Pacific ex Japan Index	29.12	31.42	33.34	31.93	40.26	21.62	14.55	10.32	14.95

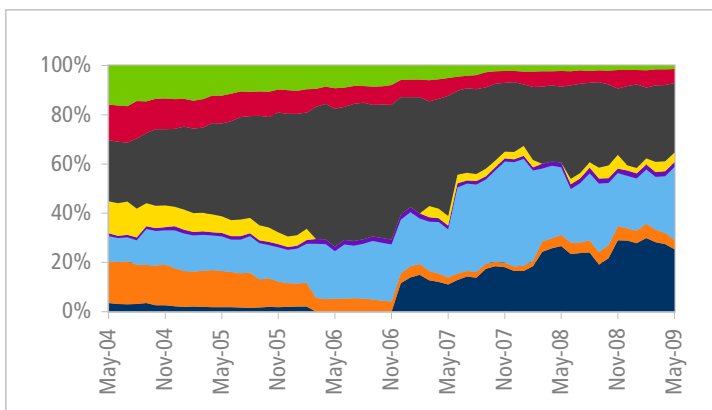
Top 5 Constituents by Index Weighting

Rank	Constituent Name	Country	Sub sector	Wgt in Index (%)
1	Larsen & Toubro	India	Heavy Construction	16.70
2	China Comm Construction (H)	China	Heavy Construction	7.96
3	Samsung C&T	South Korea	Heavy Construction	7.43
4	China National Building Materials (H)	China	Building Materials & Fixtures	6.23
5	Hyundai Engineering & Construction	South Korea	Heavy Construction	5.48

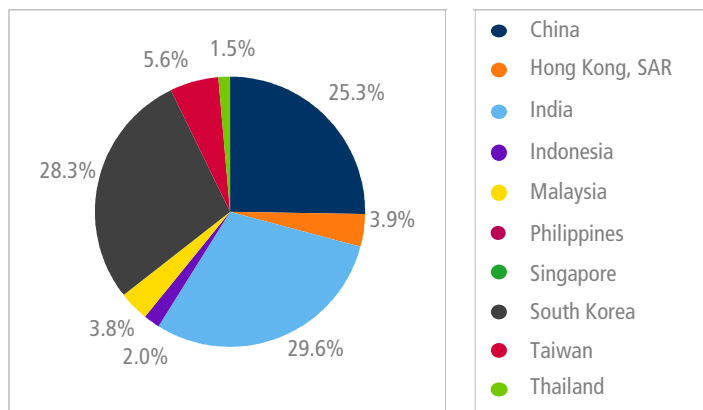
Vendor Codes

FTSE	ASCM
Bloomberg	FASCM
Reuters	<.FTASCM>

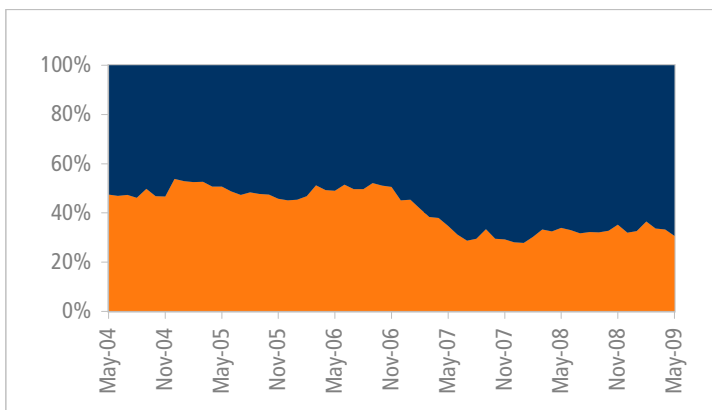
5 Year Historical Country Weightings Breakdown



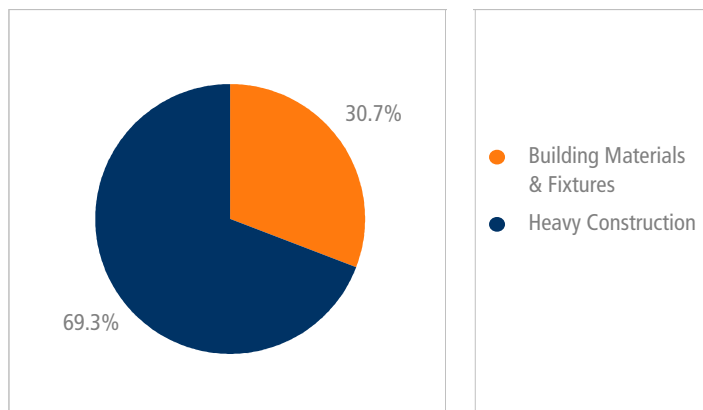
Country Weightings Breakdown - May 2009



5 Year Historical Sub Sector Weightings Breakdown



Sub Sector Weightings Breakdown - May 2009



Source: FTSE Group - data as at 29th May 2009

FOR FURTHER INFORMATION VISIT WWW.FTSE.COM, EMAIL INFO@FTSE.COM OR CALL YOUR LOCAL FTSE OFFICE:
 BOSTON: +1 888 747 FTSE (3873) CHINA (NORTH): 10800 852 1727 CHINA (SOUTH): 10800 152 1727
 FRANKFURT: +49 (0)69 156 85 144 HONG KONG: +852 2230 5800 LONDON: +44 (0)20 7866 1810
 MADRID: +34 91 411 3787 MALAYSIA: 1800 812 116 NEW YORK: +1 888 747 FTSE (3873) PARIS: +33 (0)1 53 76 82 88
 SAN FRANCISCO: +1 888 747 FTSE(3873) SINGAPORE: 800 8523 654 SYDNEY: 1800 653 680 TAIWAN: 0080 185 6152
 THAILAND: 001 800 852 5111 TOKYO: +81 3 3581 2811



FTSE ASIAN SECTOR INDEX SERIES

FTSE Asian Financial Services Index - May 2009



Index Overview

FTSE Asian Financial Services Index consists of companies in the life and nonlife insurance sectors. Companies providing services on consumer finance, specialty finance, investment services and asset managers are also included in this sector.

Historical Performance (%)

Index Name	No of Cons	1M	3M	6M	YTD	2008	2007	2006	2005	2004	12M Div Yld
FTSE Asian Financial Services Index	30	20.17	68.93	65.26	38.50	-53.36	49.80	52.09	2.65	18.32	2.67
FTSE Asia Pacific ex Japan Index	-	14.67	51.30	43.25	31.22	-53.24	35.85	29.67	17.11	19.79	3.72

Historical Volatility (%)

Source: FTSE Group / USD price performance - data as at 29th May 2009

Index Name	1M	3M	6M	YTD	2008	2007	2006	2005	2004
FTSE Asian Financial Services Index	39.74	45.38	44.79	43.41	47.43	27.67	20.42	14.26	22.89
FTSE Asia Pacific ex Japan Index	29.12	31.42	33.34	31.93	40.26	21.62	14.55	10.32	14.95

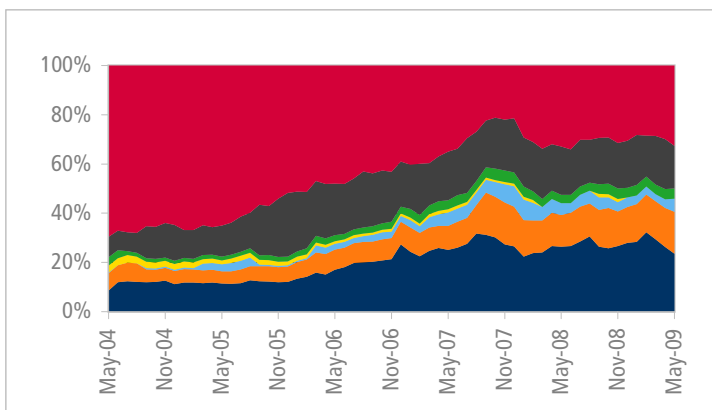
Top 5 Constituents by Index Weighting

Rank	Constituent Name	Country	Sub sector	Wgt in Index (%)
1	Hong Kong Exchanges & Clearing	Hong Kong, SAR	Investment Services	12.65
2	China Life Insurance (H)	China	Life Insurance	11.58
3	Ping An of China (H)	China	Life Insurance	10.21
4	Cathay Financial Holding	Taiwan	Specialty Finance	6.05
5	Samsung F & M Ins Co	South Korea	Property & Casualty Insurance	5.29

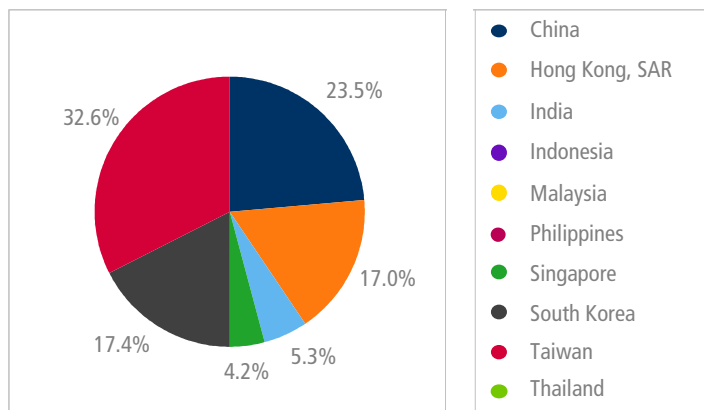
Vendor Codes

FTSE	ASFS
Bloomberg	FASFS
Reuters	<FTASFS>

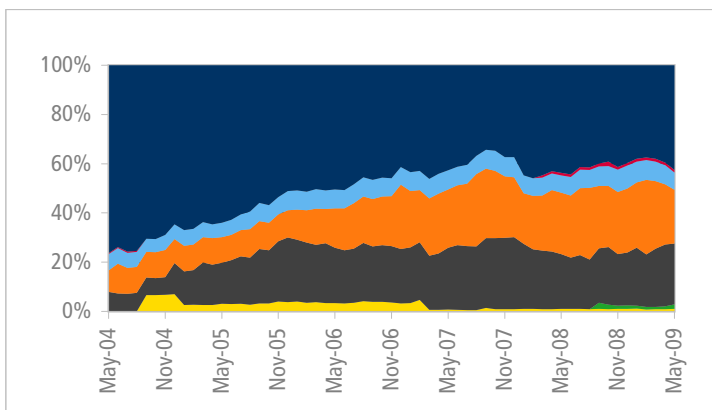
5 Year Historical Country Weightings Breakdown



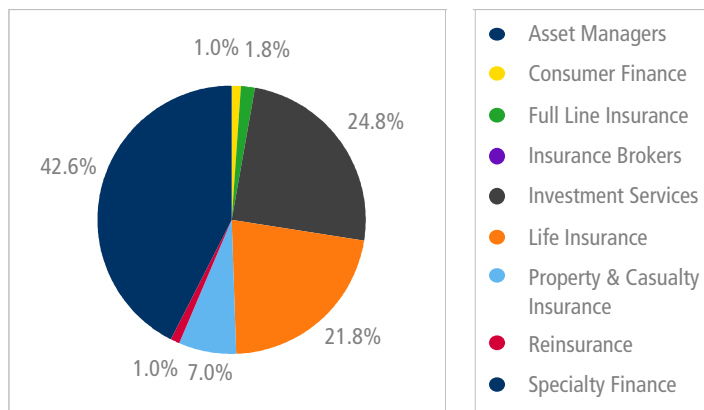
Country Weightings Breakdown - May 2009



5 Year Historical Sub Sector Weightings Breakdown



Sub Sector Weightings Breakdown - May 2009



Source: FTSE Group - data as at 29th May 2009

FTSE ASIAN SECTOR INDEX SERIES

FTSE Asian Food & Beverage Index - May 2009



Index Overview

FTSE Asian Food & Beverage Index consists of manufactures and distributors of beer, wines and spirits, non-alcoholic beverage and food products. It also includes companies in the farming and fishing sector that grow crops or raise livestock, operate fisheries or own non-tobacco plantations.

Historical Performance (%)

Index Name	No of Cons	1M	3M	6M	YTD	2008	2007	2006	2005	2004	12M Div Yld
FTSE Asian Food & Beverage Index	25	11.85	40.95	40.90	27.43	-52.26	51.09	37.42	23.02	16.41	2.22
FTSE Asia Pacific ex Japan Index	-	14.67	51.30	43.25	31.22	-53.24	35.85	29.67	17.11	19.79	3.72

Historical Volatility (%)

Source: FTSE Group / USD price performance - data as at 29th May 2009

Index Name	1M	3M	6M	YTD	2008	2007	2006	2005	2004
FTSE Asian Food & Beverage Index	23.50	24.40	26.46	26.10	36.34	21.53	16.87	10.51	15.30
FTSE Asia Pacific ex Japan Index	29.12	31.42	33.34	31.93	40.26	21.62	14.55	10.32	14.95

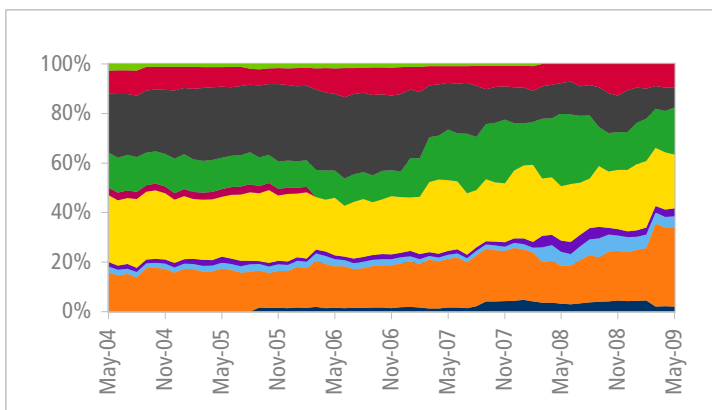
Top 5 Constituents by Index Weighting

Rank	Constituent Name	Country	Sub sector	Wgt in Index (%)
1	IOI	Malaysia	Farming & Fishing	13.53
2	Wilmar International Limited	Singapore	Food Products	9.89
3	Uni-president Enterprises	Taiwan	Food Products	9.41
4	Tingyi (Cayman Islands) Holdings	Hong Kong, SAR	Food Products	7.62
5	Want Want China Holdings Ltd.	Hong Kong, SAR	Food Products	5.91

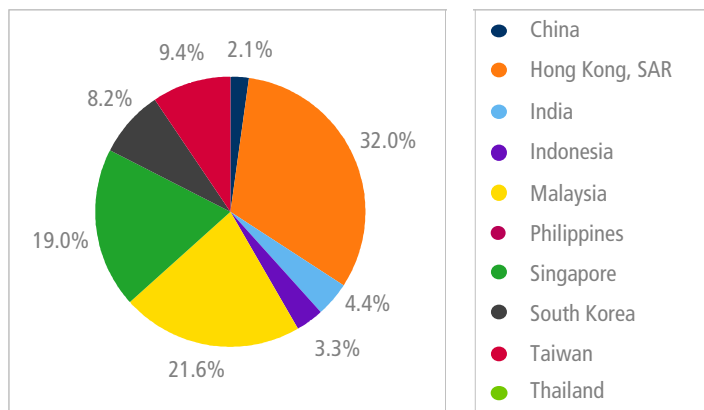
Vendor Codes

FTSE	ASBE
Bloomberg	FASBE
Reuters	<FTASBE>

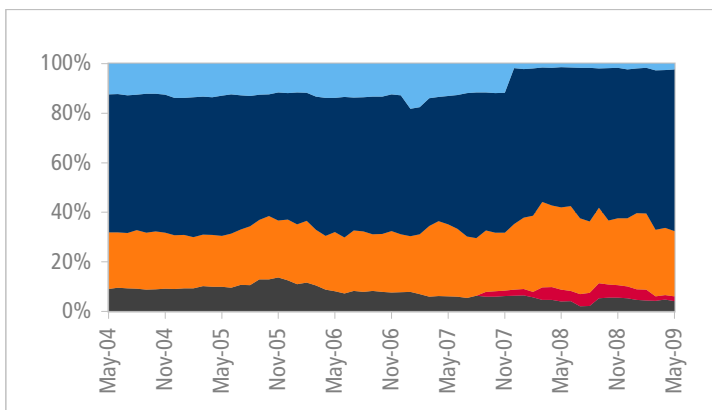
5 Year Historical Country Weightings Breakdown



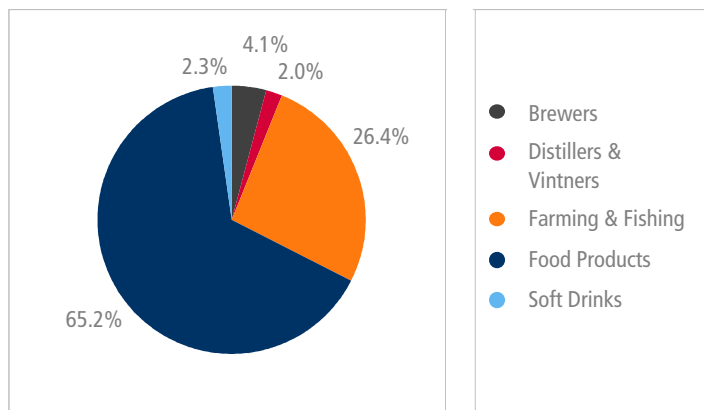
Country Weightings Breakdown - May 2009



5 Year Historical Sub Sector Weightings Breakdown



Sub Sector Weightings Breakdown - May 2009



Source: FTSE Group - data as at 29th May 2009

FOR FURTHER INFORMATION VISIT WWW.FTSE.COM, EMAIL INFO@FTSE.COM OR CALL YOUR LOCAL FTSE OFFICE:
 BOSTON: +1 888 747 FTSE (3873) CHINA (NORTH): 10800 852 1727 CHINA (SOUTH): 10800 152 1727
 FRANKFURT: +49 (0)69 156 85 144 HONG KONG: +852 2230 5800 LONDON: +44 (0)20 7866 1810
 MADRID: +34 91 411 3787 MALAYSIA: 1800 812 116 NEW YORK: +1 888 747 FTSE (3873) PARIS: +33 (0)1 53 76 82 88
 SAN FRANCISCO: +1 888 747 FTSE(3873) SINGAPORE: 800 8523 654 SYDNEY: 1800 653 680 TAIWAN: 0080 185 6152
 THAILAND: 001 800 852 5111 TOKYO: +81 3 3581 2811



FTSE ASIAN SECTOR INDEX SERIES

FTSE Asian Industrial Goods & Services Index - May 2009



Index Overview

FTSE Asian Industrial Goods & Services Index consists of companies engaged in aerospace & defense industry, container & packaging, electrical components & equipment and industrial machinery. It also includes operators of mail and package delivery services, industrial railway transportation and railway lines, transportations services and companies in the support services sectors.

Historical Performance (%)

Index Name	No of Cons	1M	3M	6M	YTD	2008	2007	2006	2005	2004	12M Div Yld
FTSE Asian Industrial Goods & Services	30	22.06	60.39	64.27	49.51	-60.40	70.31	31.30	20.40	29.25	2.92
FTSE Asia Pacific ex Japan Index	-	14.67	51.30	43.25	31.22	-53.24	35.85	29.67	17.11	19.79	3.72

Historical Volatility (%)

Source: FTSE Group / USD price performance - data as at 29th May 2009

Index Name	1M	3M	6M	YTD	2008	2007	2006	2005	2004
FTSE Asian Industrial Goods & Services	32.43	33.04	35.27	33.26	42.80	25.93	14.32	10.85	18.07
FTSE Asia Pacific ex Japan Index	29.12	31.42	33.34	31.93	40.26	21.62	14.55	10.32	14.95

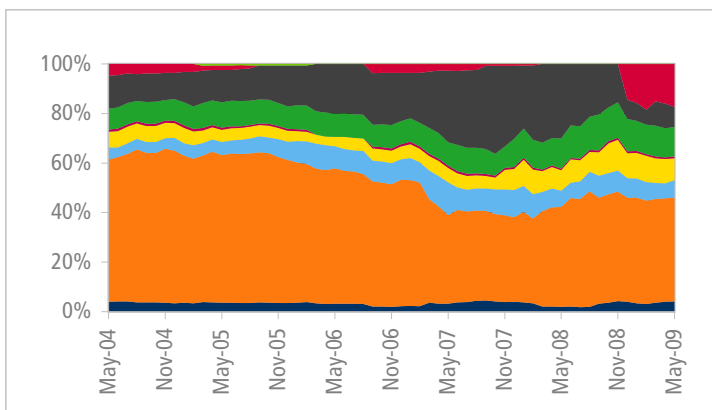
Top 5 Constituents by Index Weighting

Rank	Constituent Name	Country	Sub sector	Wgt in Index (%)
1	Hon Hai Precision Industry	Taiwan	Electrical Components & Equipment	17.31
2	Hutchison Whampoa	Hong Kong, SAR	Diversified Industrials	13.77
3	Sime Darby Bhd	Malaysia	Diversified Industrials	7.34
4	Swire Pacific A	Hong Kong, SAR	Diversified Industrials	7.17
5	Bharat Heavy Elect .LS	India	Industrial Machinery	5.38

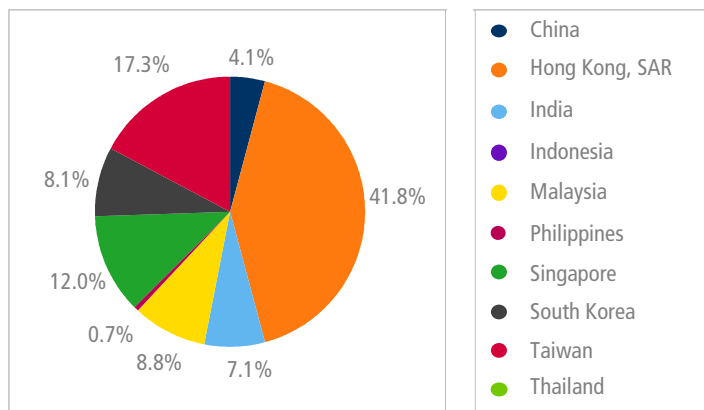
Vendor Codes

FTSE	ASIG
Bloomberg	FASIG
Reuters	<.FTASIG>

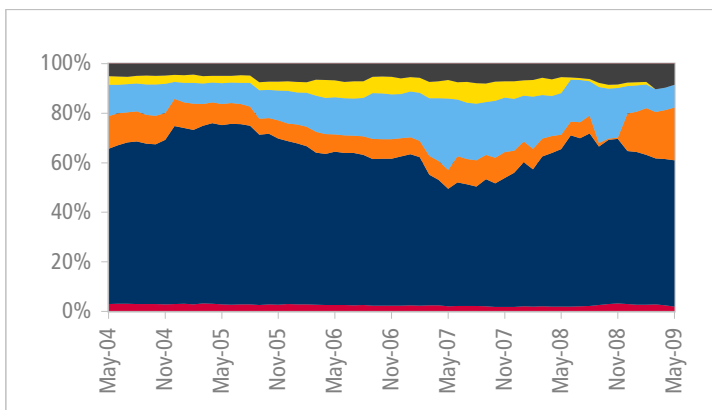
5 Year Historical Country Weightings Breakdown



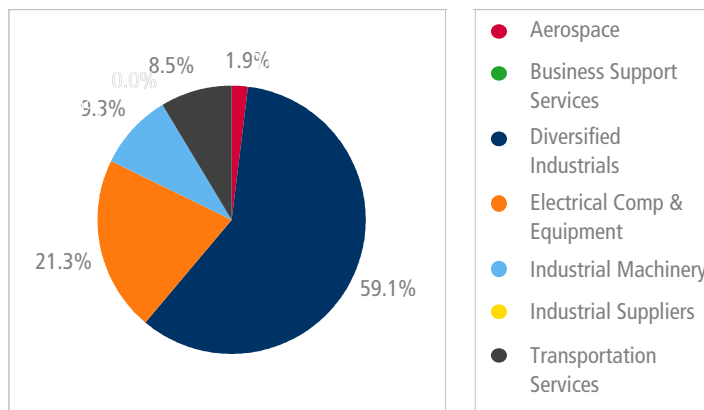
Country Weightings Breakdown - May 2009



5 Year Historical Sub Sector Weightings Breakdown



Sub Sector Weightings Breakdown - May 2009



Source: FTSE Group - data as at 29th May 2009

FTSE ASIAN SECTOR INDEX SERIES

FTSE Asian Marine Transportation Index - May 2009

Index Overview

FTSE Asian Marine Transportation Index consists of providers of on-water transportation for commercial markets such as container shipping.

Historical Performance (%)

Index Name	No of Cons	1M	3M	6M	YTD	2008	2007	2006	2005	2004	12M Div Yld
FTSE Asian Marine Transportation Index	10	26.64	69.46	63.92	34.72	-60.43	100.29	11.99	-3.90	-	4.44
FTSE Asia Pacific ex Japan Index	-	14.67	51.30	43.25	31.22	-53.24	35.85	29.67	17.11	19.79	3.72

Historical Volatility (%)

Source: FTSE Group / USD price performance - data as at 29th May 2009

Index Name	1M	3M	6M	YTD	2008	2007	2006	2005	2004
FTSE Asian Marine Transportation Index	48.16	49.40	50.04	48.02	54.33	35.38	18.07	14.83	-
FTSE Asia Pacific ex Japan Index	29.12	31.42	33.34	31.93	40.26	21.62	14.55	10.32	14.95

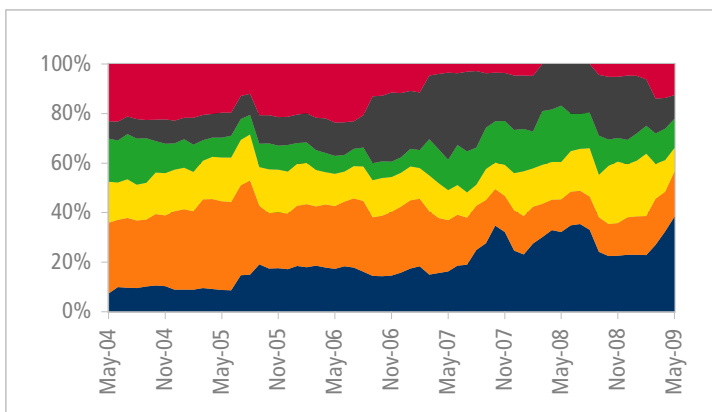
Top 5 Constituents by Index Weighting

Rank	Constituent Name	Country	Sub sector	Wgt in Index (%)
1	China COSCO Holdings (H)	China	Marine Transportation	24.89
2	China Shipping Development (H)	China	Marine Transportation	13.52
3	Cosco Pacific (Red Chip)	Hong Kong, SAR	Marine Transportation	10.67
4	Hyundai Merchant Marine	South Korea	Marine Transportation	9.52
5	MISC (F)	Malaysia	Marine Transportation	9.50

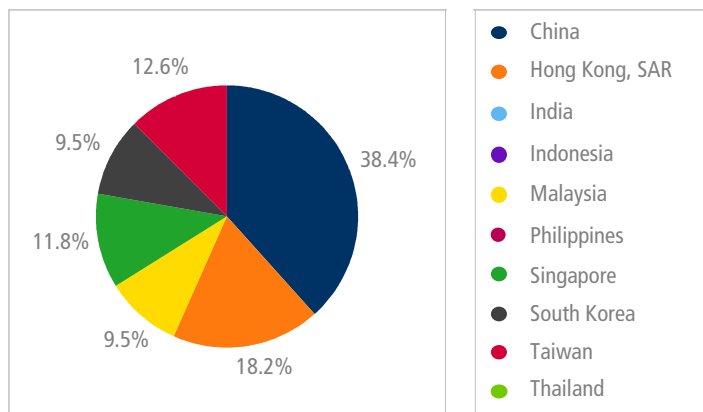
Vendor Codes

FTSE	ASMT
Bloomberg	FASMT
Reuters	<.FTASMT>

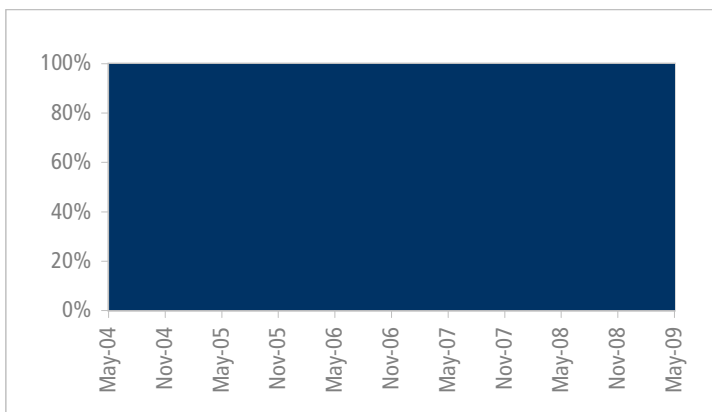
5 Year Historical Country Weightings Breakdown



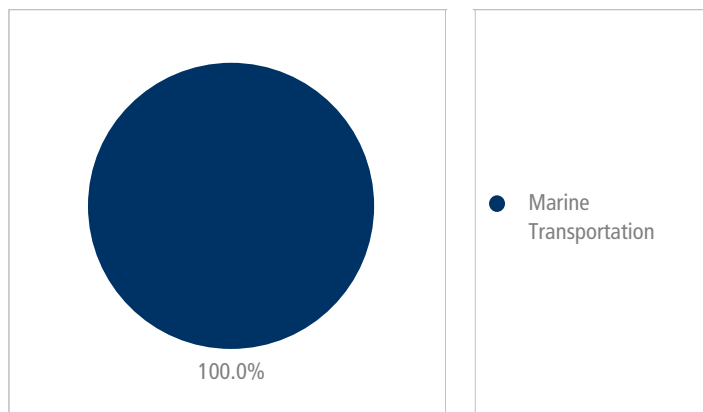
Country Weightings Breakdown - May 2009



5 Year Historical Sub Sector Weightings Breakdown



Sub Sector Weightings Breakdown - May 2009



Source: FTSE Group - data as at 29th May 2009

FTSE ASIAN SECTOR INDEX SERIES

FTSE Asian Oil & Gas Index - May 2009

Index Overview

FTSE Asian Oil & Gas Index consists of companies engaged in exploration for and drilling, distribution and supply of oil and gas products. It also includes supplier of equipment and services to oil fields and offshore platforms and operators of pipelines.

Historical Performance (%)

Index Name	No of Cons	1M	3M	6M	YTD	2008	2007	2006	2005	2004	12M Div Yld
FTSE Asian Oil & Gas Index	20	20.40	63.22	55.98	41.41	-56.28	67.73	38.18	22.79	26.79	3.07
FTSE Asia Pacific ex Japan Index	-	14.67	51.30	43.25	31.22	-53.24	35.85	29.67	17.11	19.79	3.72

Historical Volatility (%)

Source: FTSE Group / USD price performance - data as at 29th May 2009

Index Name	1M	3M	6M	YTD	2008	2007	2006	2005	2004
FTSE Asian Oil & Gas Index	36.40	37.10	39.84	38.84	51.05	29.10	20.38	17.33	24.00
FTSE Asia Pacific ex Japan Index	29.12	31.42	33.34	31.93	40.26	21.62	14.55	10.32	14.95

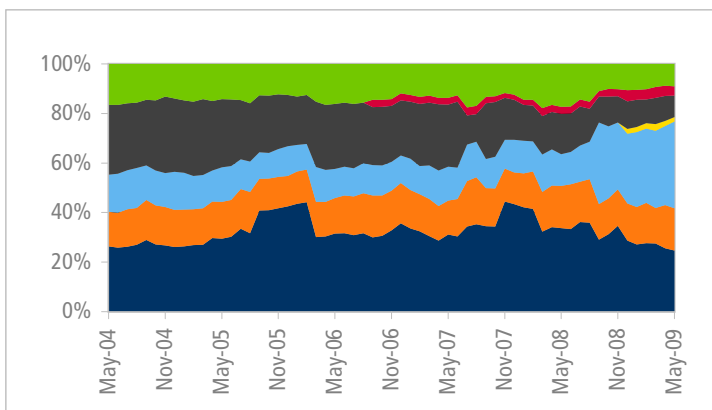
Top 5 Constituents by Index Weighting

Rank	Constituent Name	Country	Sub sector	Wgt in Index (%)
1	Reliance Industries	India	Exploration & Production	18.34
2	CNOOC (Red Chip)	Hong Kong, SAR	Exploration & Production	16.99
3	Petrochina (H)	China	Integrated Oil & Gas	13.99
4	China Petroleum & Chemical (H)	China	Integrated Oil & Gas	10.73
5	Oil & Natural Gas	India	Exploration & Production	5.97

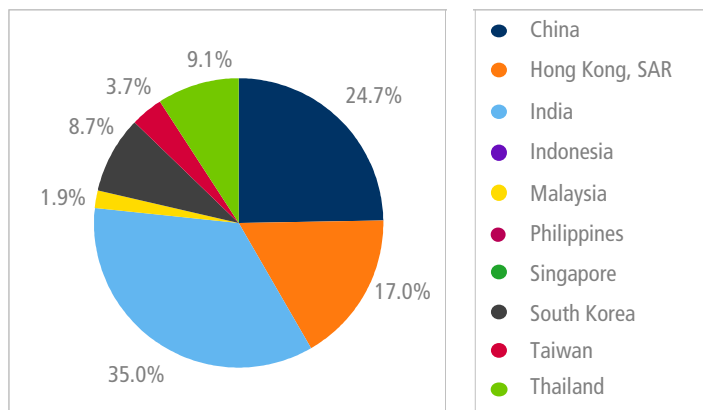
Vendor Codes

FTSE	ASOG
Bloomberg	FASOG
Reuters	<.FTASOG>

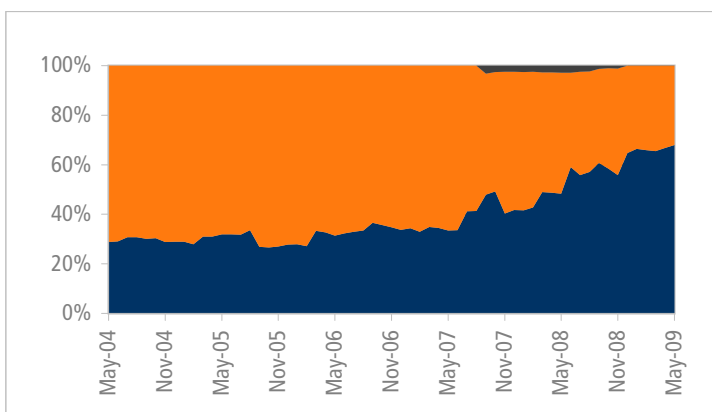
5 Year Historical Country Weightings Breakdown



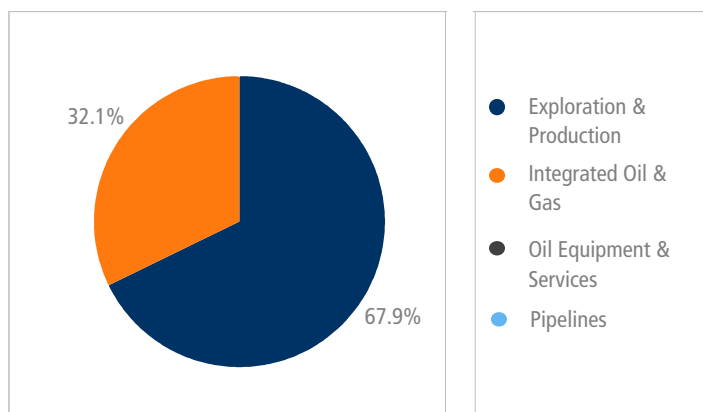
Country Weightings Breakdown - May 2009



5 Year Historical Sub Sector Weightings Breakdown



Sub Sector Weightings Breakdown - May 2009



Source: FTSE Group - data as at 29th May 2009

FTSE ASIAN SECTOR INDEX SERIES

FTSE Asian Personal & Household Goods Index - May 2009

Index Overview

FTSE Asian Personal & Household Goods Index consists of manufacturers and distributors of durable and nondurable household products, furniture, consumer electronics, recreational products, toys, clothing & accessories, footwear, personal products and tobacco.

Historical Performance (%)

Index Name	No of Cons	1M	3M	6M	YTD	2008	2007	2006	2005	2004	12M Div Yld
FTSE Asian Personal & Household Goods	30	8.19	39.92	40.75	31.82	-39.36	27.31	18.17	25.15	14.45	2.49
FTSE Asia Pacific ex Japan Index	-	14.67	51.30	43.25	31.22	-53.24	35.85	29.67	17.11	19.79	3.72

Historical Volatility (%)

Source: FTSE Group / USD price performance - data as at 29th May 2009

Index Name	1M	3M	6M	YTD	2008	2007	2006	2005	2004
FTSE Asian Personal & Household Goods	25.84	26.29	26.28	25.34	34.46	19.07	17.62	11.41	18.29
FTSE Asia Pacific ex Japan Index	29.12	31.42	33.34	31.93	40.26	21.62	14.55	10.32	14.95

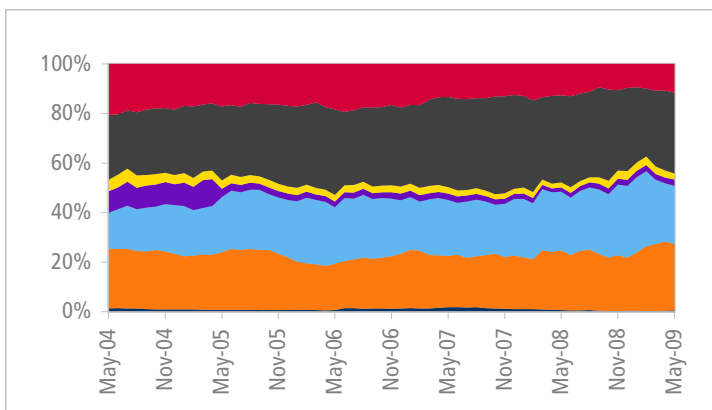
Top 5 Constituents by Index Weighting

Rank	Constituent Name	Country	Sub sector	Wgt in Index (%)
1	LG Electronics	South Korea	Consumer Electronics	14.70
2	ITC	India	Tobacco	13.60
3	Li & Fung	Hong Kong, SAR	Clothing & Accessories	10.38
4	Hindustan Unilever	India	Personal Products	6.11
5	Hengan Intl Group	Hong Kong, SAR	Personal Products	5.53

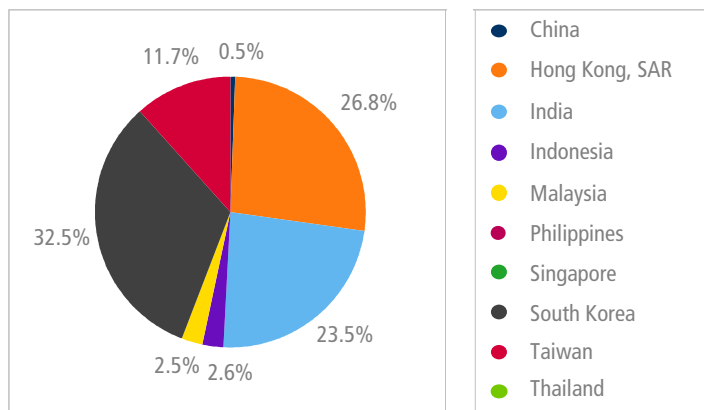
Vendor Codes

FTSE	ASPH
Bloomberg	FASPH
Reuters	<FTASPH>

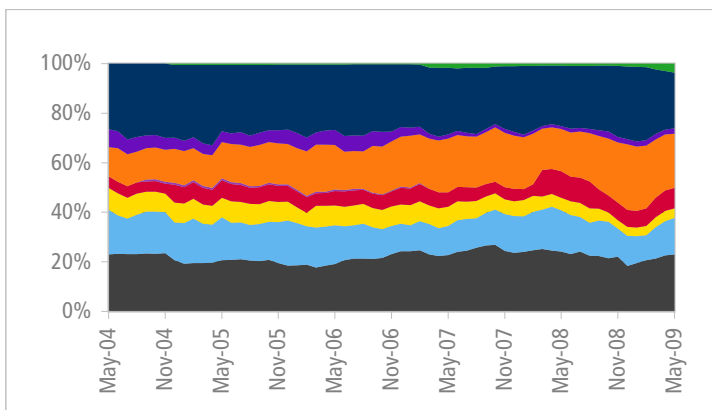
5 Year Historical Country Weightings Breakdown



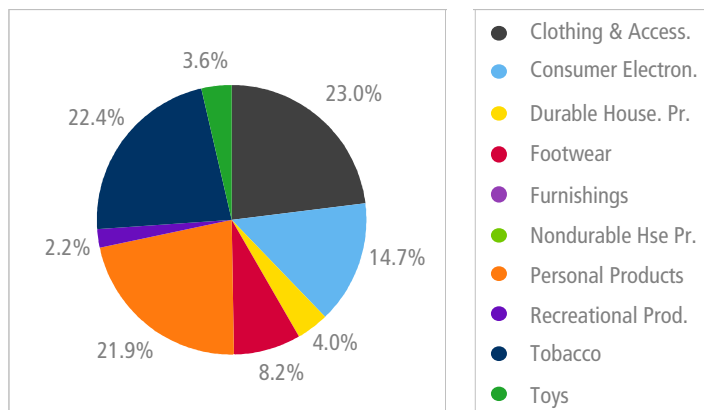
Country Weightings Breakdown - May 2009



5 Year Historical Sub Sector Weightings Breakdown



Sub Sector Weightings Breakdown - May 2009



Source: FTSE Group - data as at 29th May 2009

FTSE ASIAN SECTOR INDEX SERIES

FTSE Asian Property Index - May 2009



Index Overview

FTSE Asian Property Index consists of companies that invest directly or indirectly in real estate, real estate investment trusts (REITs) and listed property trust (LPTs). It also includes companies in the mortgage finance sectors and home construction sectors.

Historical Performance (%)

Index Name	No of Cons	1M	3M	6M	YTD	2008	2007	2006	2005	2004	12M Div Yld
FTSE Asian Property Index	30	27.14	71.38	62.12	49.64	-58.06	57.96	39.79	14.03	33.90	2.55
FTSE Asia Pacific ex Japan Index	-	14.67	51.30	43.25	31.22	-53.24	35.85	29.67	17.11	19.79	3.72

Historical Volatility (%)

Source: FTSE Group / USD price performance - data as at 29th May 2009

Index Name	1M	3M	6M	YTD	2008	2007	2006	2005	2004
FTSE Asian Property Index	39.26	43.31	43.01	41.33	46.57	27.62	16.47	11.85	20.37
FTSE Asia Pacific ex Japan Index	29.12	31.42	33.34	31.93	40.26	21.62	14.55	10.32	14.95

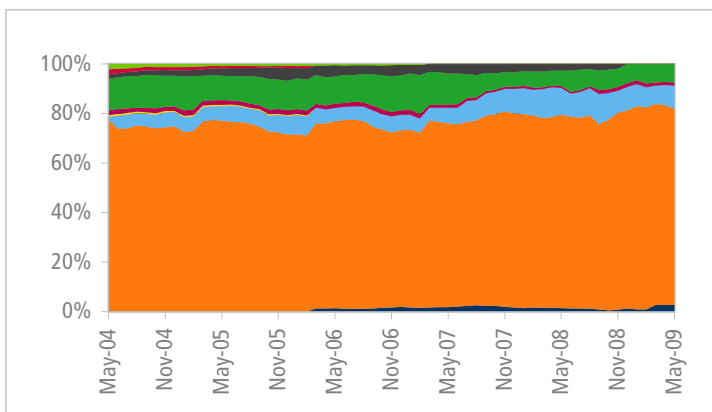
Top 5 Constituents by Index Weighting

Rank	Constituent Name	Country	Sub sector	Wgt in Index (%)
1	Cheung Kong (Hldgs)	Hong Kong, SAR	Real Estate Holding & Development	14.03
2	Sun Hung Kai Props	Hong Kong, SAR	Real Estate Holding & Development	13.75
3	Housing Development Finance	India	Mortgage Finance	6.79
4	China Overseas Land & Inv (Red Chip)	Hong Kong, SAR	Real Estate Holding & Development	6.17
5	Capitaland	Singapore	Real Estate Holding & Development	5.99

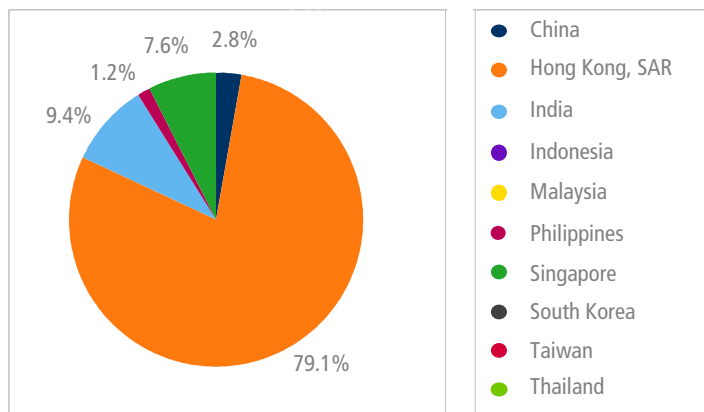
Vendor Codes

FTSE	ASPR
Bloomberg	FASPR
Reuters	<FTASPR>

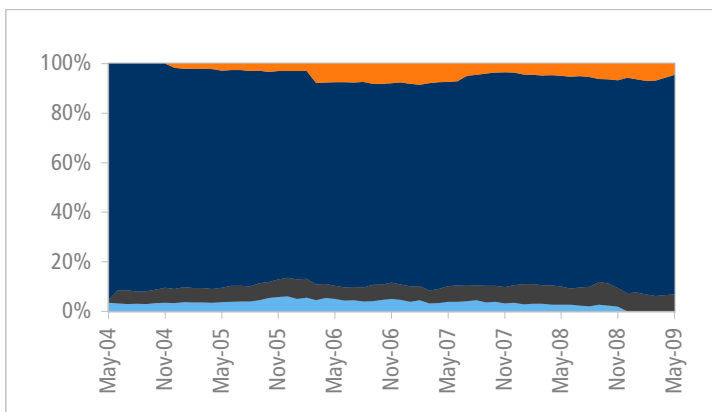
5 Year Historical Country Weightings Breakdown



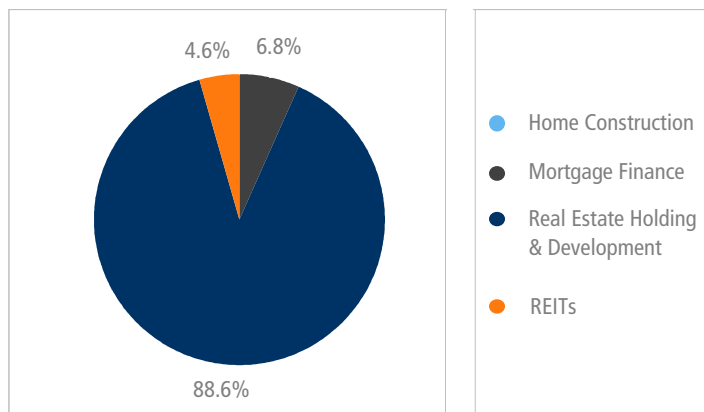
Country Weightings Breakdown - May 2009



5 Year Historical Sub Sector Weightings Breakdown



Sub Sector Weightings Breakdown - May 2009



Source: FTSE Group - data as at 29th May 2009

FTSE ASIAN SECTOR INDEX SERIES

FTSE Asian Retail Index - May 2009

Index Overview

FTSE Asian Retail Index consists of drug retailers, food retailers & wholesalers, apparel retailers, broadline retailers and home improvement retailers. It also includes specialized consumer services providers such as day-care centres, hair salons etc. and specialty retailers which concentrates on a single class of goods such as electronics and books.

Historical Performance (%)

Index Name	No of Cons	1M	3M	6M	YTD	2008	2007	2006	2005	2004	12M Div Yld
FTSE Asian Retail Index	10	12.63	37.18	32.18	11.46	-58.27	29.20	21.78	37.58	-	2.73
FTSE Asia Pacific ex Japan Index	-	14.67	51.30	43.25	31.22	-53.24	35.85	29.67	17.11	19.79	3.72

Historical Volatility (%)

Source: FTSE Group / USD price performance - data as at 29th May 2009

Index Name	1M	3M	6M	YTD	2008	2007	2006	2005	2004
FTSE Asian Retail Index	37.75	47.74	41.99	42.08	42.71	22.69	17.30	13.55	-
FTSE Asia Pacific ex Japan Index	29.12	31.42	33.34	31.93	40.26	21.62	14.55	10.32	14.95

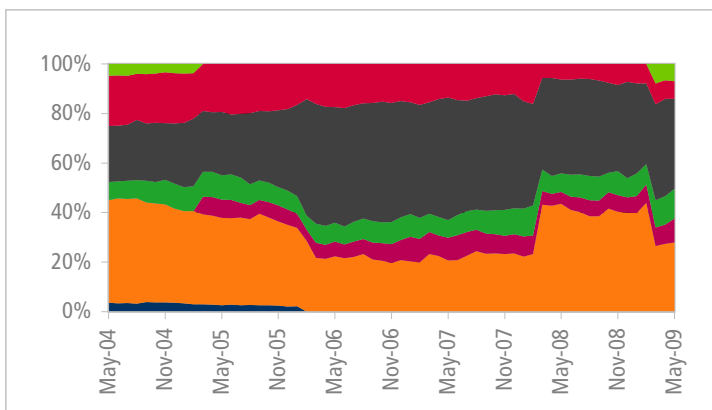
Top 5 Constituents by Index Weighting

Rank	Constituent Name	Country	Sub sector	Wgt in Index (%)
1	Shinsegae	South Korea	Broadline Retailers	12.63
2	Lotte Shopping	South Korea	Broadline Retailers	12.48
3	Jardine Cycle & Carriage	Singapore	Specialty Retailers	12.00
4	Esprit Holdings	Hong Kong, SAR	Apparel Retailers	11.85
5	Hyundai Department Store	South Korea	Broadline Retailers	11.19

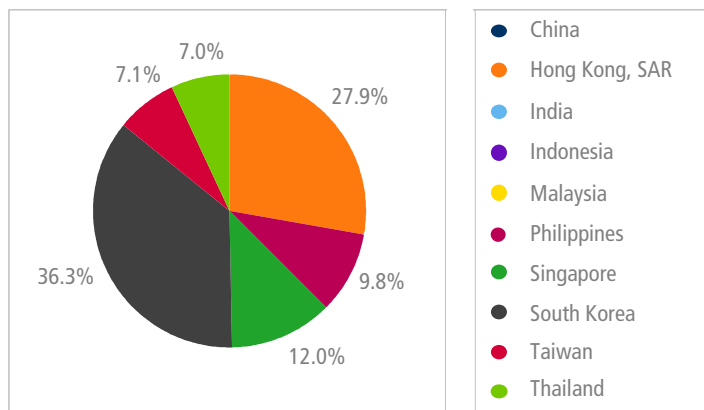
Vendor Codes

FTSE	ASRE
Bloomberg	FASRE
Reuters	<FTASRE>

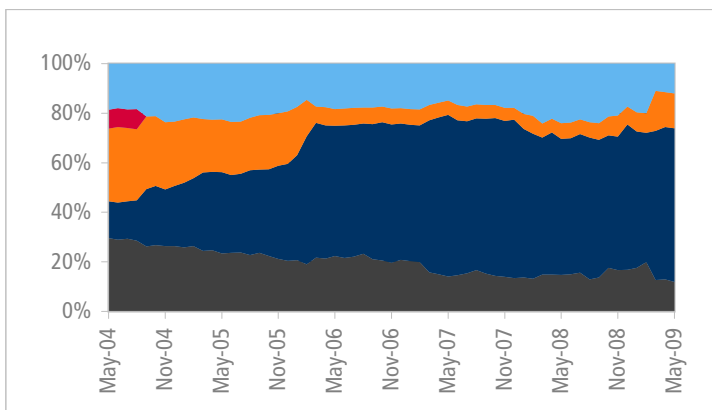
5 Year Historical Country Weightings Breakdown



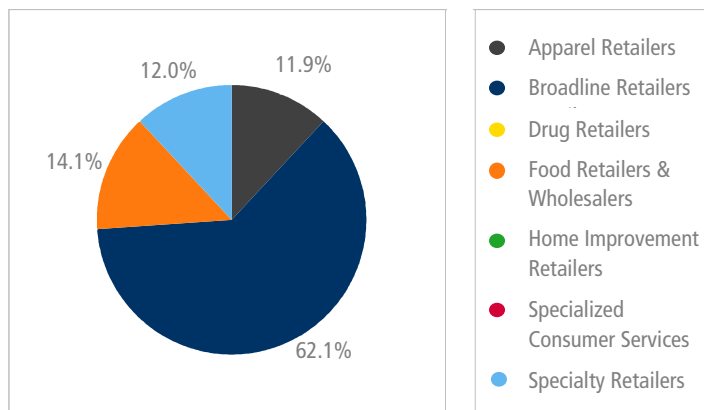
Country Weightings Breakdown - May 2009



5 Year Historical Sub Sector Weightings Breakdown



Sub Sector Weightings Breakdown - May 2009



Source: FTSE Group - data as at 29th May 2009

FTSE ASIAN SECTOR INDEX SERIES

FTSE Asian Technology Index - May 2009



Index Overview

FTSE Asian Technology Index consists of companies providing consultation services to other business relating to information technology, internet-related services and distributors of computer software for home or corporate use. The index also includes manufacturers and distributors of computer hardware and electronic products, electronic office equipments, semiconductors and telecommunications equipments.

Historical Performance (%)

Index Name	No of Cons	1M	3M	6M	YTD	2008	2007	2006	2005	2004	12M Div Yld
FTSE Asian Technology Index	30	10.23	53.19	54.37	45.97	-51.17	2.38	15.83	28.88	6.55	3.56
FTSE Asia Pacific ex Japan Index	-	14.67	51.30	43.25	31.22	-53.24	35.85	29.67	17.11	19.79	3.72

Historical Volatility (%)

Source: FTSE Group / USD price performance - data as at 29th May 2009

Index Name	1M	3M	6M	YTD	2008	2007	2006	2005	2004
FTSE Asian Technology Index	32.19	31.04	37.15	34.30	40.22	22.13	20.66	16.99	27.40
FTSE Asia Pacific ex Japan Index	29.12	31.42	33.34	31.93	40.26	21.62	14.55	10.32	14.95

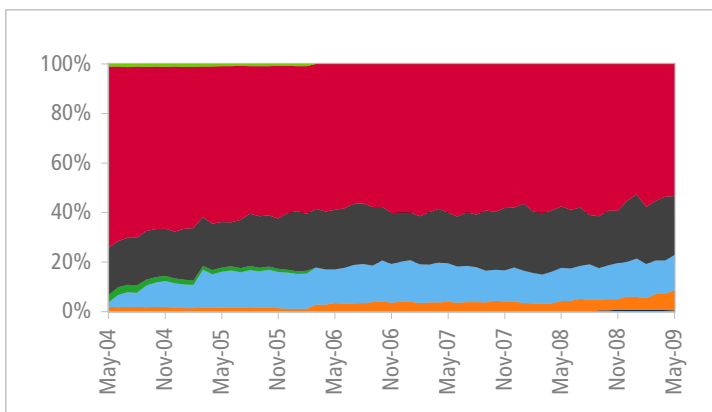
Top 5 Constituents by Index Weighting

Rank	Constituent Name	Country	Sub sector	Wgt in Index (%)
1	Taiwan Semiconductor Manufacturing	Taiwan	Semiconductors	14.20
2	Samsung Electronics	South Korea	Semiconductors	12.52
3	Infosys Technologies	India	Computer Services	10.45
4	High Tech Computer	Taiwan	Telecommunications Equipment	6.57
5	MediaTek	Taiwan	Semiconductors	5.34

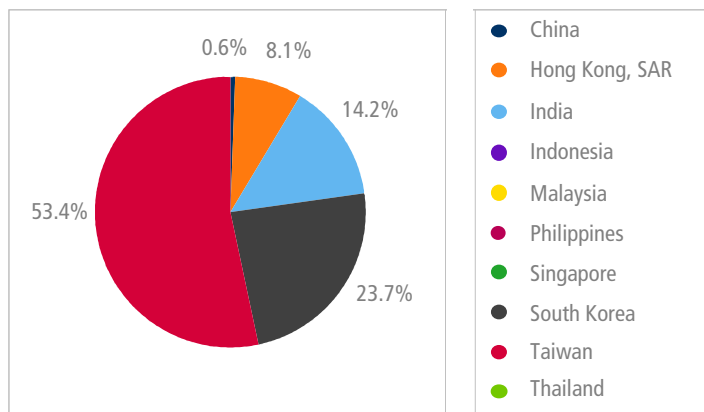
Vendor Codes

FTSE	ASTE
Bloomberg	FASTE
Reuters	<.FTASTE>

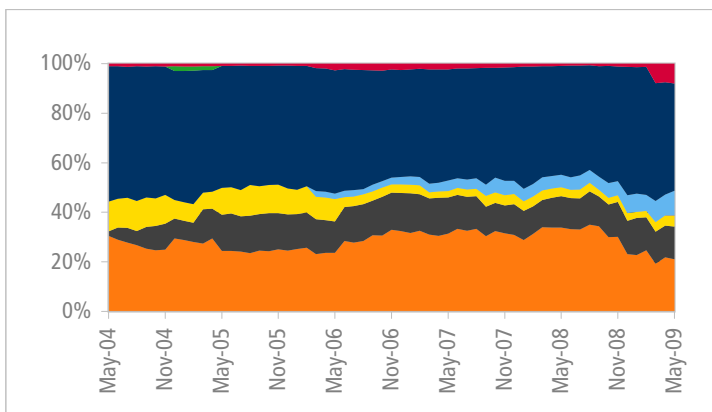
5 Year Historical Country Weightings Breakdown



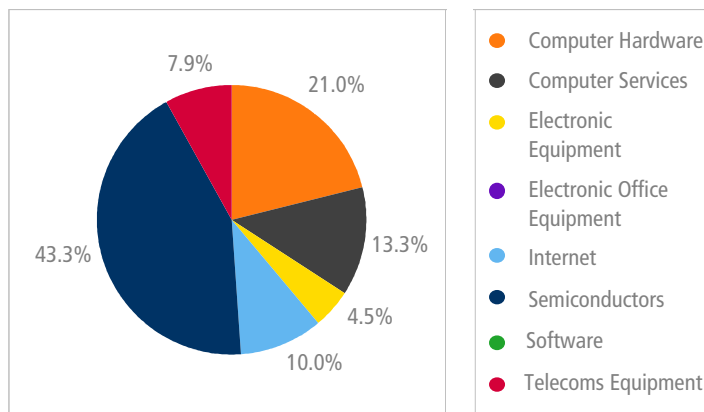
Country Weightings Breakdown - May 2009



5 Year Historical Sub Sector Weightings Breakdown



Sub Sector Weightings Breakdown - May 2009



Source: FTSE Group - data as at 29th May 2009

FTSE ASIAN SECTOR INDEX SERIES

FTSE Asian Telecommunications Index - May 2009

Index Overview

FTSE Asian Telecommunications Index consists of providers of fixed-line telephone services, including regional and long-distance and providers of mobile telephone services, including cellular, satellite and paging services.

Historical Performance (%)

Index Name	No of Cons	1M	3M	6M	YTD	2008	2007	2006	2005	2004	12M Div Yld
FTSE Asian Telecommunications Index	26	8.48	25.52	15.64	7.16	-41.65	40.91	48.29	9.66	18.45	3.38
FTSE Asia Pacific ex Japan Index	-	14.67	51.30	43.25	31.22	-53.24	35.85	29.67	17.11	19.79	3.72

Historical Volatility (%)

Source: FTSE Group / USD price performance - data as at 29th May 2009

Index Name	1M	3M	6M	YTD	2008	2007	2006	2005	2004
FTSE Asian Telecommunications Index	28.98	25.78	26.80	26.30	33.15	21.51	15.72	11.58	17.20
FTSE Asia Pacific ex Japan Index	29.12	31.42	33.34	31.93	40.26	21.62	14.55	10.32	14.95

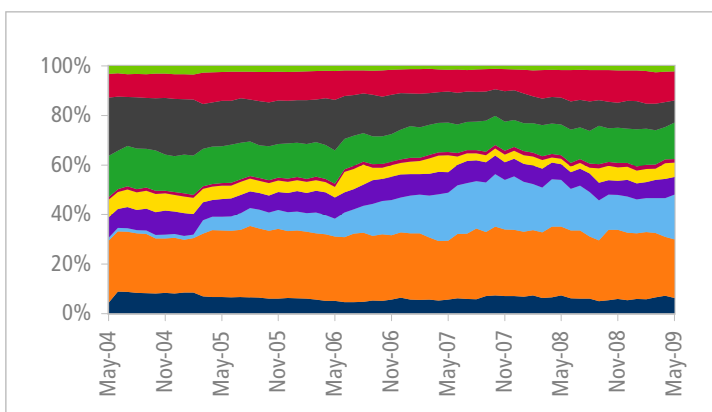
Top 5 Constituents by Index Weighting

Rank	Constituent Name	Country	Sub sector	Wgt in Index (%)
1	China Mobile (Red Chip)	Hong Kong, SAR	Mobile Telecommunications	14.75
2	Singapore Telecom	Singapore	Fixed Line Telecommunications	13.85
3	Bharti Airtel	India	Mobile Telecommunications	11.04
4	Chunghwa Telecom	Taiwan	Fixed Line Telecommunications	7.56
5	China Unicom HK Ltd (Red Chip)	Hong Kong, SAR	Mobile Telecommunications	7.27

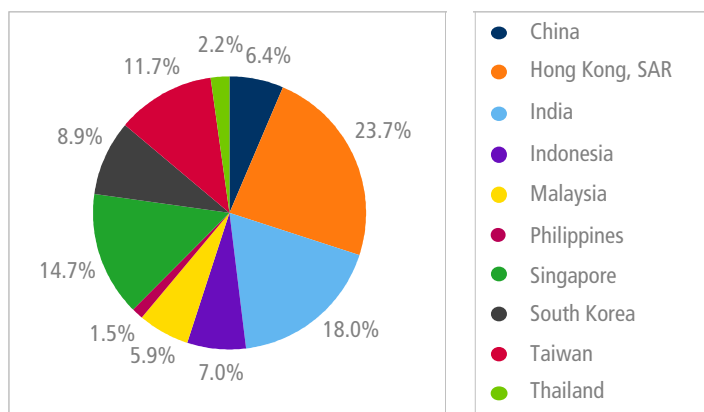
Vendor Codes

FTSE	ASTC
Bloomberg	FASTEL
Reuters	<FTASTC>

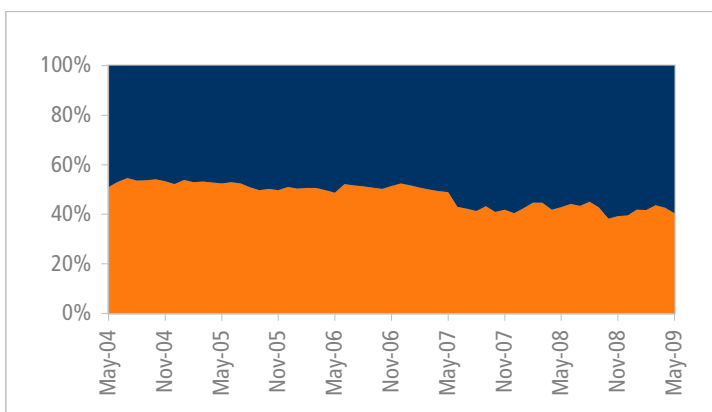
5 Year Historical Country Weightings Breakdown



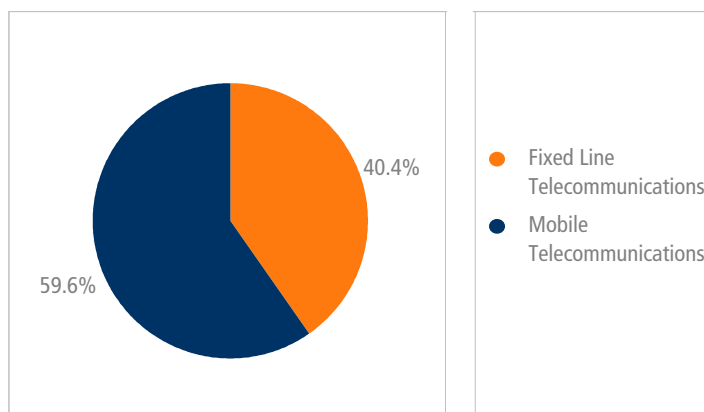
Country Weightings Breakdown - May 2009



5 Year Historical Sub Sector Weightings Breakdown



Sub Sector Weightings Breakdown - May 2009



Source: FTSE Group - data as at 29th May 2009

FTSE ASIAN SECTOR INDEX SERIES

FTSE Asian Travel, Leisure & Media Index - May 2009



Index Overview

FTSE Asian Travel, Leisure & Media Index consists operators and broadcasters of radio, television, music and filmed entertainment, media agencies and publishers. It also includes companies engaging in the airlines, gambling and casino facilities, hotel, recreational services, restaurants & bars and providers of travel and tourism related services.

Historical Performance (%)

Index Name	No of Cons	1M	3M	6M	YTD	2008	2007	2006	2005	2004	12M Div Yld
FTSE Asian Travel, Leisure & Media Index	30	15.86	41.97	31.50	22.11	-50.44	26.68	34.46	9.47	13.04	2.94
FTSE Asia Pacific ex Japan Index	-	14.67	51.30	43.25	31.22	-53.24	35.85	29.67	17.11	19.79	3.72

Historical Volatility (%)

Source: FTSE Group / USD price performance - data as at 29th May 2009

Index Name	1M	3M	6M	YTD	2008	2007	2006	2005	2004
FTSE Asian Travel, Leisure & Media Index	27.81	29.25	27.09	27.48	30.81	20.04	13.01	8.73	14.23
FTSE Asia Pacific ex Japan Index	29.12	31.42	33.34	31.93	40.26	21.62	14.55	10.32	14.95

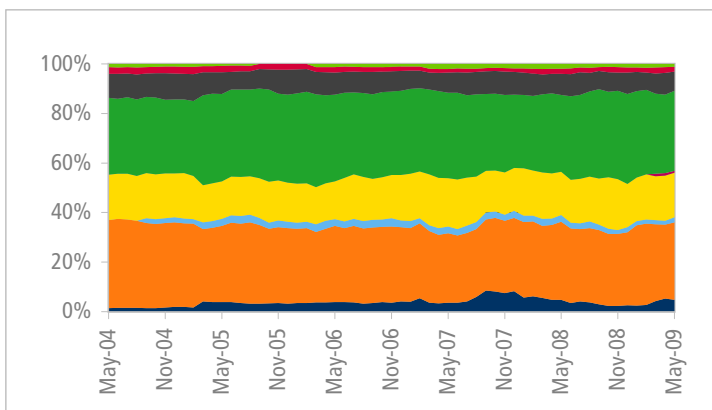
Top 5 Constituents by Index Weighting

Rank	Constituent Name	Country	Sub sector	Wgt in Index (%)
1	MTR Corp	Hong Kong, SAR	Travel & Tourism	11.04
2	Singapore Airlines	Singapore	Airlines	10.64
3	City Developments	Singapore	Hotels	9.25
4	Genting	Malaysia	Hotels	8.96
5	Singapore Press Holdings	Singapore	Publishing	6.76

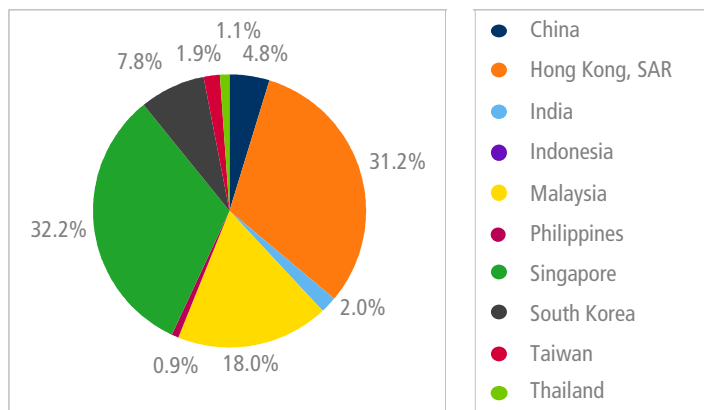
Vendor Codes

FTSE	ASTL
Bloomberg	FASTL
Reuters	<FTASTL>

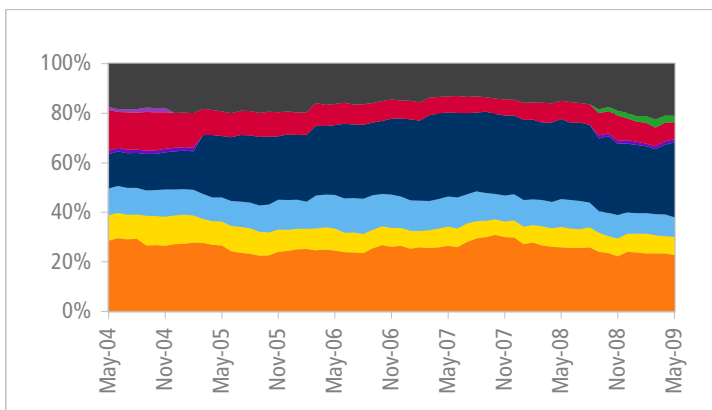
5 Year Historical Country Weightings Breakdown



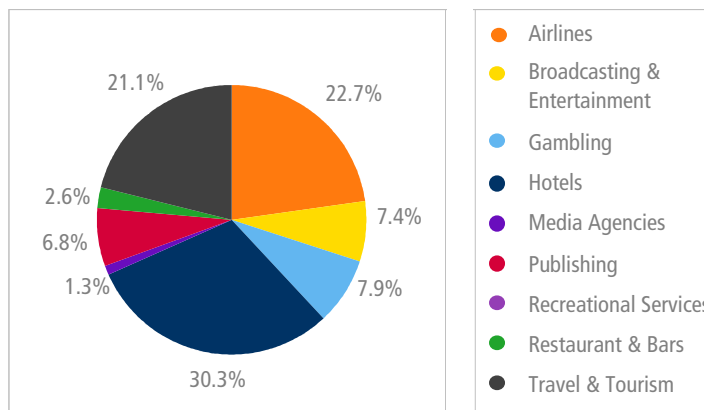
Country Weightings Breakdown - May 2009



5 Year Historical Sub Sector Weightings Breakdown



Sub Sector Weightings Breakdown - May 2009



Source: FTSE Group - data as at 29th May 2009

FTSE ASIAN SECTOR INDEX SERIES

FTSE Asian Utilities Index - May 2009

Index Overview

FTSE Asian Utilities Index consists of companies generating and distributing electricity, distributors of gas to end users and companies providing water to end users, including water treatment plants. Utilities companies with significant presence in more than one utility are also included.

Historical Performance (%)

Index Name	No of Cons	1M	3M	6M	YTD	2008	2007	2006	2005	2004	12M Div Yld
FTSE Asian Utilities Index	25	9.14	21.76	22.63	17.39	-36.92	34.44	21.62	10.75	17.28	2.39
FTSE Asia Pacific ex Japan Index	-	14.67	51.30	43.25	31.22	-53.24	35.85	29.67	17.11	19.79	3.72

Historical Volatility (%)

Source: FTSE Group / USD price performance - data as at 29th May 2009

Index Name	1M	3M	6M	YTD	2008	2007	2006	2005	2004
FTSE Asian Utilities Index	21.78	20.06	22.23	20.83	33.65	16.55	11.03	9.08	12.97
FTSE Asia Pacific ex Japan Index	29.12	31.42	33.34	31.93	40.26	21.62	14.55	10.32	14.95

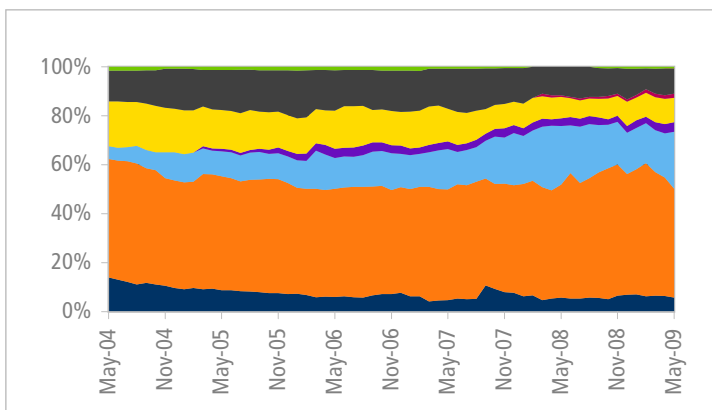
Top 5 Constituents by Index Weighting

Rank	Constituent Name	Country	Sub sector	Wgt in Index (%)
1	Hong Kong & China Gas	Hong Kong, SAR	Gas Distribution	15.88
2	CLP Holdings	Hong Kong, SAR	Electricity	11.95
3	Hongkong Electric	Hong Kong, SAR	Electricity	10.95
4	Kepeco	South Korea	Electricity	9.08
5	NTPC	India	Electricity	6.49

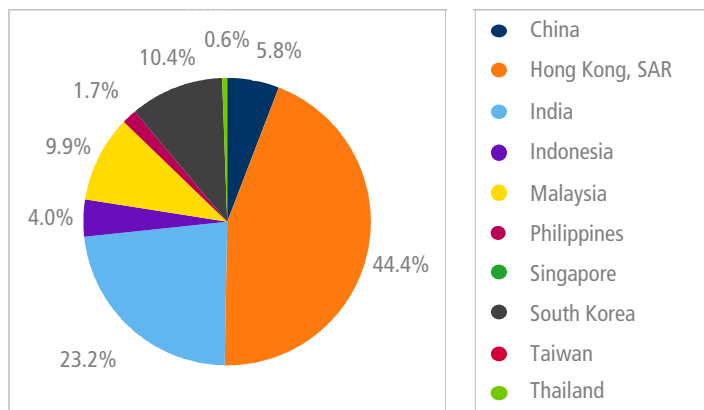
Vendor Codes

FTSE	ASUT
Bloomberg	FASUT
Reuters	<FTASUT>

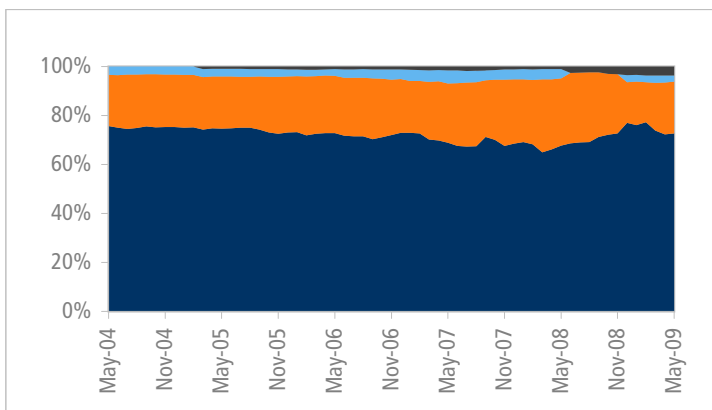
5 Year Historical Country Weightings Breakdown



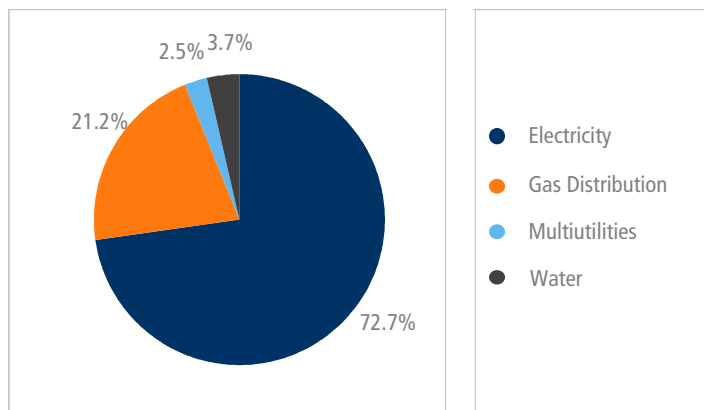
Country Weightings Breakdown - May 2009



5 Year Historical Sub Sector Weightings Breakdown



Sub Sector Weightings Breakdown - May 2009



Source: FTSE Group - data as at 29th May 2009

© 2009 FTSE International Limited ("FTSE") ©. All rights reserved. "FTSE®", "FT-SE®" and "Footsie®" are trade marks jointly owned by the London Stock Exchange Plc and The Financial Times Limited and are used by FTSE under licence. The FTSE Asian Sector Indexes are calculated by FTSE International. All rights in and to the FTSE Asian Sector Indexes vest in FTSE.

Neither FTSE, the London Stock Exchange Plc, the Financial Times Limited nor FTSE's relevant partners makes any warranty or representation whatsoever, expressly or impliedly, either as to the results to be obtained from the use of the indexes and/or the figure at which the said index stands at any particular time on any particular day or otherwise. Each Index is compiled and calculated by FTSE and/or its relevant partners. However, neither FTSE nor the London Stock Exchange Plc nor the Financial Times Limited nor FTSE's relevant partners shall be liable (whether in negligence or otherwise) to any person for any error in any index and neither FTSE nor the London Stock Exchange Plc nor the Financial Times Limited nor FTSE's relevant partners shall be under any obligation to advise any person of any error therein.

The Industry Classification Benchmark ("ICB") is a joint product of FTSE and Dow Jones & Company, Inc ("Dow Jones"). "Dow Jones" and "DJ" are trade and service marks of Dow Jones. FTSE and Dow Jones do not accept any liability to any person for any loss or damage arising out of any error or omission in the ICB.

FOR FURTHER INFORMATION VISIT WWW.FTSE.COM, EMAIL INFO@FTSE.COM OR CALL YOUR LOCAL FTSE OFFICE:
BOSTON: +1 888 747 FTSE (3873) CHINA (NORTH): 10800 852 1727 CHINA (SOUTH): 10800 152 1727
FRANKFURT: +49 (0)69 156 85 144 HONG KONG: +852 2230 5800 LONDON: +44 (0)20 7866 1810
MADRID: +34 91 411 3787 MALAYSIA: 1800 812 116 NEW YORK: +1 888 747 FTSE (3873) PARIS: +33 (0)1 53 76 82 88
SAN FRANCISCO: +1 888 747 FTSE(3873) SINGAPORE: 800 8523 654 SYDNEY: 1800 653 680 TAIWAN: 0080 185 6152
THAILAND: 001 800 852 5111 TOKYO: +81 3 3581 2811