

FTSE
Products



Transparency



Customisation



Innovation

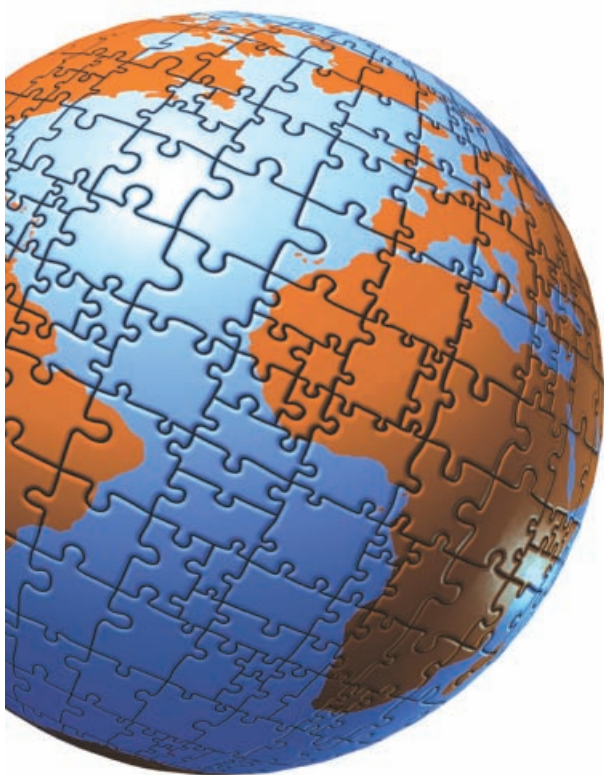


Solutions



CONTENTS

2	The FTSE Difference
3	Leading Through Innovation
3	A Building Block Approach
4	Industry Classification Benchmark (ICB)
5	Custom Solutions
6-23	FTSE Products
24	FTSE Product Packages



	Global Equity Indices
6	FTSE Global Equity Index Series
7	FTSE Multinationals Index Series
7	FTSE Global Style Index Series
7	FTSE Shariah Global Equity Index Series

	Regional & Partner Indices
8	FTSE EMEA Indices
10	FTSE UK Indices
12	FTSE Asia Pacific Indices
15	FTSE US Indices

	Investment Strategy Indices
16	FTSE RAFI Index Series
17	FTSE GWA Index Series
17	FTSE UK Dividend+ Index

	Property & Alternative Investment Indices
18	FTSE EPRA/NAREIT Global Real Estate Index Series
18	FTSE EPRA/NAREIT Dividend+ Index Series
18	FTSE EPRA/NAREIT Global REITs & Non-REITs Index Series
18	FTSE NAREIT US Real Estate Index Series
19	FTSE UK Commercial Property Index Series
19	FTSE IDFC India Infrastructure Index Series
20	FTSE Hedge

	Responsible Investment Indices
21	FTSE4Good Index Series
21	FTSE4Good Environmental Leaders Europe 40 Index
21	FTSE4Good IBEX Index
21	FTSE ET50 Index
21	FTSE Environmental Opportunities All-Share Index

	Fixed Income Indices
22	FTSE Actuaries UK Gilts Index Series
22	FTSE Global Bond Index Series
23	FTSE MTIRS Index Series
23	FTSE Turkish Lira Government Bond Index
23	FTSE Xinhua China Government Bond Index

The FTSE Difference

Our values and principles are applied to all FTSE indices to ensure that we meet the needs of today's investor:

Index Specialist

FTSE's only business is the creation of indices. By being at the heart of the markets that we serve, we can understand the needs of our clients and deliver the right products.

Global Market Coverage

We calculate over 120,000 equity, bond, property and hedge fund indices. The FTSE Global Equity Index Series (GEIS) alone covers over 98% of the world's investable equity market capitalisation. Whether you need a benchmark or tradable index in any currency, market, region, sector or asset class, there is generally a FTSE index for you – and if not, FTSE can customise one to meet your exact requirements.

Country Classification

FTSE recognises the importance of the application of a transparent, objective and consistent approach when assigning the market status of countries.

FTSE conducted a widespread market consultation which resulted in the development of a framework and criteria for assigning countries based on:

- **Economic size**
- **Wealth**
- **Quality of markets**
- **Depth and breadth of markets**

FTSE applies this framework to conduct an annual review of the market status of all countries into Developed, Advanced Emerging, Secondary Emerging or Frontier markets. Any changes to a country's status will be subject to at least six months' notice. In order to ensure that the potential reclassification of countries is transparent to investors we have created a Watch List of countries that may be subject to a change in their classification if a number of set conditions are met. The Watch List is reviewed annually by the FTSE Policy Group. A full list of countries and their current classification can be viewed at www.ftse.com/country.

Innovation

FTSE provides innovative solutions to clients – from free float adjustment to the classification of countries' market status – both now accepted as market standards.

Autonomy

FTSE is not reflective of any vested interests or specific user groups. Our objective is to provide measurement tools for investors worldwide.

Customisation

FTSE Custom Solutions create tailor-made benchmark solutions for clients. The indices are designed and constructed to meet specific client requirements.

Transparency

The transparency of our indices is second to none. Our publicly available index rules explain in full detail the methodology used in each of our index series'.

Independent Committees

Independent index committees govern our indices to ensure they continue to meet market needs. The committees are also responsible for making any changes to the index rules, and decide on the treatment of complex corporate actions.

Award Winning Solutions

- **Index Provider of the Year** 2008, 2006, and 2005 – Global Pensions Magazine
- **Most Innovative Exchange Traded Fund** 2008, for the Finans Portfoy Yonetimi, FTSE Turkish Lira Government Bond Index
- **Most Innovative Exchange Traded Fund** 2007, for the PowerShares FTSE RAFI 1000 Portfolio – 3rd Annual Global ETF Awards
- **Most Innovative Product** for the FTSE/ASEAN 40 ETF 2007, Asia Asset Management
- **William F Sharpe Award for Index Innovation** for the FTSE RAFI Index Series, 2005
- **Best Index Provider** 2005 – Structured Products Magazine.

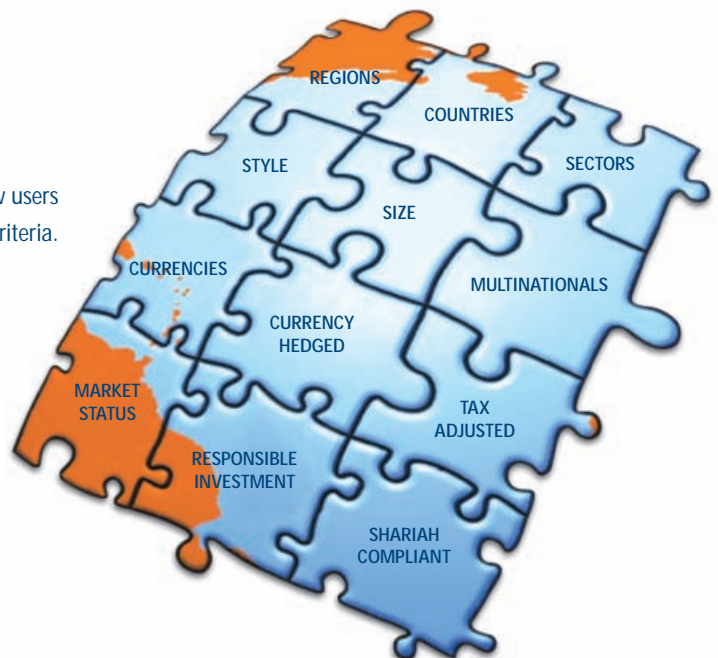
Leading through Innovation

By being at the heart of the markets that we serve, we are well positioned to understand the needs of our clients and deliver the right products. FTSE is committed to setting new standards in index innovation.

Universe		2000 FTSE adds Emerging Markets and extends the global universe to 90% with the inception of the FTSE All-World	2003 FTSE incorporates Small Cap and extends the global universe to 98% with the launch of FTSE Global Equity Index Series (GEIS)	2008 FTSE adds Frontier markets to further extend the global universe			
Sector & Market Classification			2003 FTSE introduces its Country Classification criteria	2004 FTSE develops its classification system with Dow Jones Indexes to form the Industry Classification Benchmark (ICB)			
Free Float & Liquidity							
1999 FTSE consults the market to create free float adjusted indices	2000 New stock additions to FTSE indices are free float adjusted	2001 All FTSE constituents move to free float adjusted indices		2007 FTSE implements enhanced liquidity rule			
Methodology							
1999 FTSE launches FTSE Multinationals Index Series	2001 FTSE launches its first Responsible Investment Index (FTSE4Good)	2002 FTSE launches Global Style Index Series with multi-factor approach	2003 FTSE Global Small Cap Indices form a part of the FTSE Global Equity Index Series	2004 FTSE launches Hedge Fund Index	2005 FTSE Launches FTSE Private Banking Index Series and Non-Market Cap Weighted Indices (GWA & RAFI)	2006 FTSE launches Islamic, Shariah-compliant indices. Screened by Yasaar Shariah Scholars	2008 FTSE launches its first Environmental Technology (ET) Index

A BUILDING BLOCK APPROACH TO INDEX CONSTRUCTION

Constructed using a building block approach, FTSE indices allow users to measure the global equity market against a broad range of criteria.



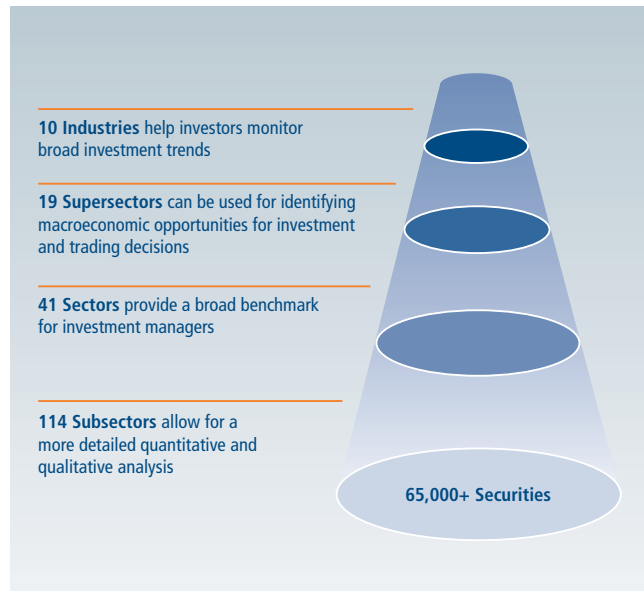
Industry Classification Benchmark (ICB)

FTSE Group and Dow Jones Indexes together offer a definitive classification system called the Industry Classification Benchmark (ICB), now recognised as the industry standard.

The system is supported by the ICB Universe Database, which contains over 60,000 companies and 65,000 securities worldwide from the FTSE and Dow Jones universes. ICB is a detailed and comprehensive structure for sector and industry analysis, facilitating the comparison of companies across four levels of classification and national boundaries. The system allocates companies to the Subsector whose definition most closely describes the nature of its business. The nature of a company's business is determined by its source of revenue or where it constitutes the majority of revenue.

The ICB universe offers a controlled balance between levels of aggregation, for those who look at markets from the top down, and granularity for those who look at markets from the bottom up.

www.icbenchmark.com



THE ICB DIFFERENCE

INVESTOR FOCUSED

ICB was created with the sophisticated needs of the investment community in mind and offers increased clarity, better structure and universality.

FLEXIBLE STRUCTURE

The four tiers meet industry analysis requirements – from broad industry trends to detailed analysis – across regions and countries.

GLOBAL PRESENCE

ICB is adopted by stock exchanges globally representing over 65% of the world's market capitalisation.

RELEVANT TO INVESTORS

The Industry and Supersector tiers are designed to reflect and facilitate current sector-based investment strategies.

GLOBAL REACH

The merger of the Dow Jones Indexes and FTSE global systems provides previously unseen company and industry coverage for the investment community.

ASSURED AND ACCURATE

Independent management and backing by global research teams provides the reassurance of accurate representation and continued growth and monitoring of the market.

BACKED BY A SINGLE DATABASE PRODUCT

The ICB system has been applied to an exhaustive universe of stocks to create the ICB Universe Database to further facilitate sector analysis.

CLEAR, PUBLICLY AVAILABLE RULES

In order to ensure that ICB is consistently maintained, it is managed independently and in accordance with the readily available Rules for the Management of ICB.

Custom Solutions

FTSE Custom Solutions creates customised indices utilising a database of over 65,000 companies across 72 countries. Examples of typical customised indices include “ex countries”, “ex sectors”, currency hedging, specific tax returns, specific stock inclusions/exclusions and responsible investment screens.

Why customise?

- **Best fit solutions** – design an index solution to meet your exact mandate.
- **Technically superior indices** – FTSE’s index design specialists apply their knowledge to your customised solution.
- **Flexibility** – specify your universe from FTSE’s database of over 65,000 stocks from 72 countries.
- **Saving time and money** – by outsourcing to an independent global index design and calculation specialist, such as FTSE.

FTSE custom index users

FTSE works with some of the largest asset owner and fund management firms worldwide to develop solutions to suit their needs, including:

- Development of a custom benchmark based on the FTSE All-World Index for the California Public Employees Retirement System (CalPERS).
- Providing 14 customised benchmark indices for the Fonds de Reserve pour les Retraites (FRR) covering European, US and Asia Pacific Markets as benchmarks for a combination of active and passive funds.

www.ftse.com/custom

The FTSE Custom Solutions team will:

1 Work with you to define your requirement



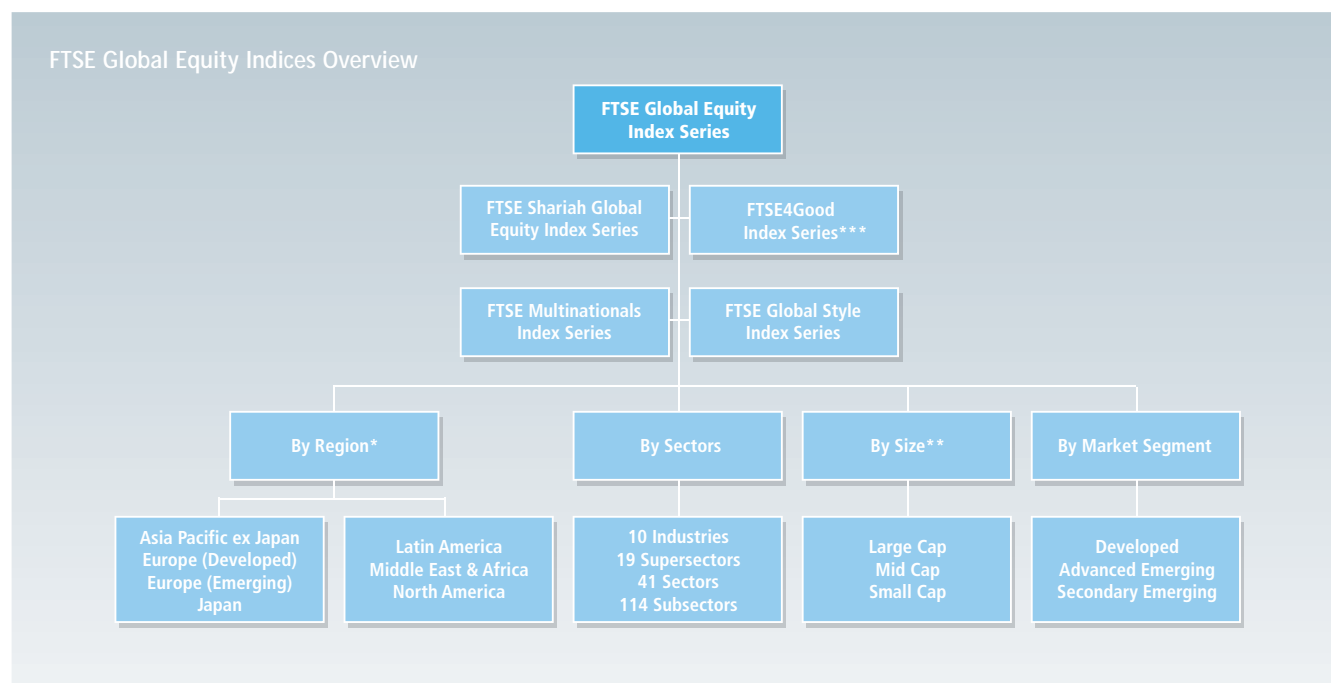
2 Design and construct your custom benchmark



3 Manage the delivery and provide on-going maintenance and support



Global Equity Indices



FTSE calculates over 120,000 indices daily. This enables us to slice the index series by region, sector, size or market segment.

* These regions can be further divided by individual countries

** Includes the FTSE All-World index, an aggregate of the Large Cap and Mid Cap indices

*** Please refer to Responsible Investment section for further information on this index series

FTSE Global Equity Index Series (GEIS)

The FTSE Global Equity Index Series covers over 8,000 securities in 48 different countries and captures 98% of the world's investable market capitalisation – covering every equity and sector relevant to international investors' needs.

The modular nature of the series provides the maximum breadth of options for choosing benchmarks or structuring portfolios. The index series is divided into Developed, Advanced Emerging, Secondary Emerging and Frontier segments, with indices calculated at regional, national and sector level. Indices are also calculated on a size level from the all-encompassing FTSE Global All Cap Indices (Large/Mid/Small Cap), FTSE All-World (Large/ Mid Cap) or single size index (Large Cap, Mid Cap or Small Cap).

The FTSE Global Equity Index Series represents a universe that is superior in meeting the requirements of international investors, ensuring relevance and investability:

- **Representative** – accurately reflects the investment opportunity set
- **Comprehensive** – seeks exhaustive coverage of the investable universe
- **Investable** – free-float and liquidity screened
- **Transparent** – clear, rules-based methodologies and regular independent reviews

www.ftse.com/geis

FTSE All-World Index Series

The FTSE All-World Index is the Large/Mid Cap aggregate of 2,700 stocks from the FTSE Global Equity Index Series. It covers 90-95% of the investable market capitalisation.

www.ftse.com/allworld

FTSE Global Small Cap Indices

The FTSE Global Small Cap Indices provide investors with unparalleled access to over 4,600 liquid small cap stocks across 48 countries.

The indices capture the bottom 10% of investable capitalisation from each of the seven geographical regions of the FTSE Global Equity Index Series. The same selection methodology is applied to a single global universe to ensure there is no double counting of stocks between size levels, allowing you the flexibility to manage small cap discretely or as part of your broader benchmark.

www.ftse.com/smallcap

FTSE Multinationals Index Series

The FTSE Multinationals Index Series is a family of indices that separates and measures the performance of multinational and local companies.

The FTSE Multinationals Index comprises companies which derive more than 30% of their revenue outside their region. The FTSE Global 100 Index is formed of the top 100 from the FTSE Multinationals Index. The remaining stocks (companies which receive 70% or more of their revenue from their domestic region) are classified as 'local' companies and form truly local indices. It is the only index series on the market that allows investors to make a clear distinction between companies exposed to local and those exposed to global economic factors.

www.ftse.com/multinationals

FTSE Global Style Index Series

The next generation in international value and growth indices is the FTSE Global Style Index Series. The indices use nine measures in a multifactor approach to clearly identify a company's value and growth characteristics. The series is an excellent benchmark for passive and active style managers and asset owners, for assisting in asset allocation, performance measurement and benchmarking.

In a continually evolving market, one of the biggest challenges for style managers is identifying a stock as either a growth or value stock. The FTSE Global Style Index Series methodology uses the thought-leading Overall Style Ranking (OSR)* concept to deliver unsurpassed accuracy to the classification of value and growth stocks.

www.ftse.com/style

* Developed by FTSE and Style Research

FTSE Shariah Global Equity Index Series

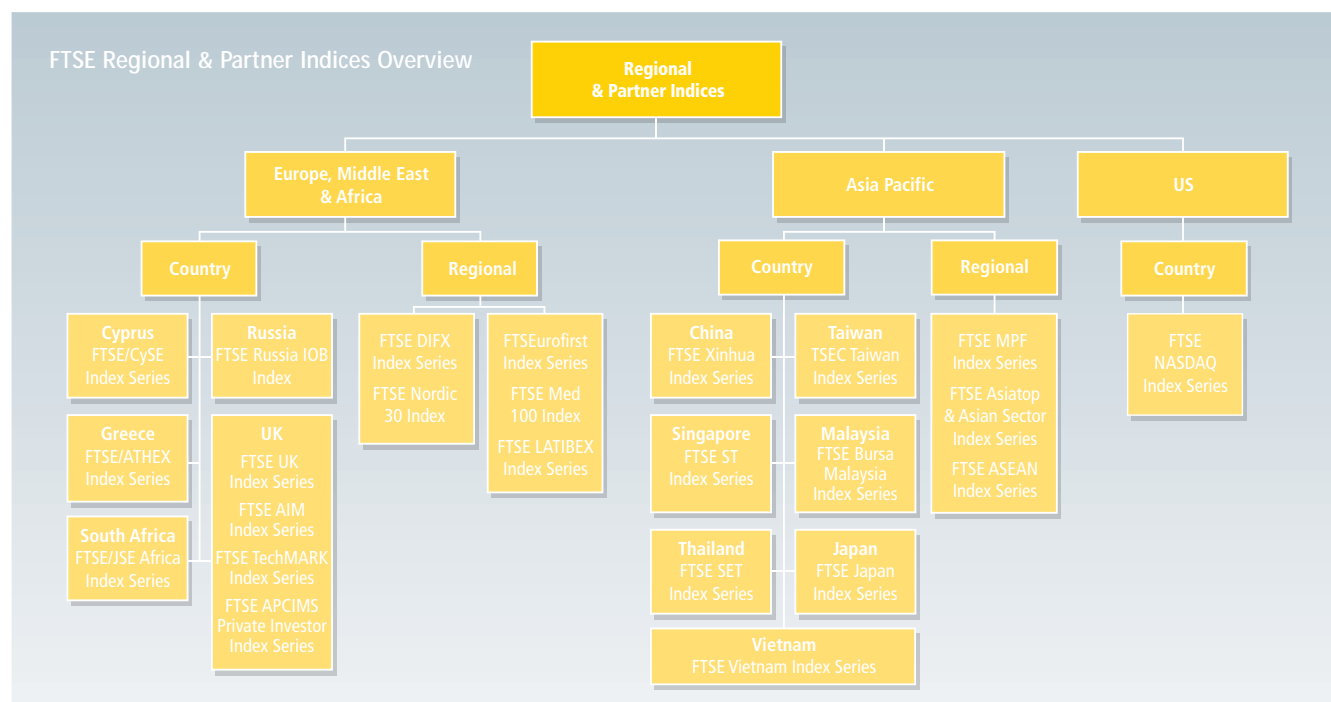
In response to the rising demand for Shariah-compliant investment opportunities, FTSE has developed a range of Shariah indices that provide a broader Shariah index solution for Islamic investors.

Based on the Large and Mid Cap stocks in the FTSE Global Equity Index Series universe, screening is then undertaken by Shariah consultants, Yasaar Research Inc., against a clear set of guiding principles.

www.ftse.com/shariah



Regional & Partner Indices



EUROPE, MIDDLE EAST & AFRICA INDICES

FTSE/ATHEX Index Series

The FTSE/ATHEX Index Series is a joint venture between FTSE Group and the Athens Stock Exchange. These indices are the performance benchmark of the Greek market and are capitalisation-weighted. The FTSE/ATHEX 20, FTSE/ATHEX Mid 40, FTSE/ATHEX Small Cap, FTSE/ATHEX 140 and FTSE/ATHEX International Index have been designed to provide real-time measures of the Athens Stock Market on which index-linked derivatives can be traded.

www.ftse.com/athex

FTSE/CySE Index Series

A joint venture between FTSE and the Cyprus Stock Exchange (CSE), the FTSE/CySE Index Series is the performance benchmark for the largest and most liquid securities trading on the Cypriot market.

www.ftse.com/cyse

FTSE DIFX Index Series

A joint venture between FTSE Group and the Dubai International Financial Exchange (DIFX), the FTSE DIFX Index Series was the first Gulf Cooperation Council (GCC) country Shariah-compliant and non-Shariah compliant tradable indices for GCC, and international investors. The GCC countries initially included in the series are the UAE, Kuwait and Qatar. These indices are intended to facilitate the creation of investment products like tracker funds, index certificates, warrants, Exchange Traded Funds (ETFs) and also pave the way for the introduction of exchange traded index derivatives including futures and options.

www.ftse.com/difx

FTSEurofirst Index Series

The FTSEurofirst indices are a joint product of FTSE Group and NYSE Euronext, the integrated, cross-border European exchange for equities, bonds, derivatives and commodities.

FTSEurofirst indices include Europe's largest and most liquid equities, thereby allowing investors to track broad based benchmarks more accurately. From the tradable FTSEurofirst 80 and 100 indices, to the benchmark FTSEurofirst 300 Index, the FTSEurofirst Index Series has a range of products to suit all European investment needs.

· FTSEurofirst Supersector Indices

The FTSEurofirst Supersector Indices are two sets of 18 sector-specific indices based on the FTSEurofirst 300 universe and derived from the Industry Classification Benchmark (ICB).

www.ftse.com/ftseurofirst

FTSE/JSE Africa Index Series

FTSE Group and JSE Limited jointly provide indices for the South African markets. The FTSE/JSE Africa Index Series is designed to represent the performance of South African companies, providing investors with a comprehensive and complementary set of indices, which measure the performance of the major capital and industry segments of the South African market. The series allows investors to track by market capitalisation or sector.

www.ftse.com/jse

FTSE LATIBEX Index Series

FTSE Group and Bolsa de Madrid have worked together to create the FTSE LATIBEX All-Share and FTSE LATIBEX TOP Indices. European investors have a single point of access to the performance of Latin American stocks trading in the LATIBEX market, denominated in Euros and trading in real-time. The FTSE LATIBEX Brasil Index was launched in response to investors' growing interest in Brazilian blue chips. It is the only Euro-denominated tradable index covering Brazilian stocks, and ranks the 13 most liquid listed on LATIBEX by free-float adjusted market cap.

www.ftse.com/latibex

FTSE Med 100 Index

The FTSE Med 100 Index tracks the performance of stock exchanges in the eastern Mediterranean region. It comprises 100 of the largest and most liquid companies in the region that are quoted on the stock exchanges of Cyprus, Greece and Israel. The index is a tradable index, calculated in real-time and suitable for derivative trading, or other investment products such as exchange-traded funds.

www.ftse.com/med100

FTSE Nordic 30 Index

The FTSE Nordic 30 Index tracks the performance of the 30 largest and most liquid companies in Sweden, Denmark, Norway and Finland, in real-time for the purpose of derivative trading. The index uses the universe of the FTSE All-World Index – Nordic Region.

www.ftse.com/nordic

FTSE Russia IOB Index

FTSE Group together with the London Stock Exchange has developed and launched the FTSE Russia IOB Index, a market-cap weighted index designed to measure the performance of the 15 biggest and most liquid Russian companies trading on the London Stock Exchange's International Order Book (IOB) under the form of Russian Depositary Receipts (DRs). The index enables investors to gain exposure to one of the largest and most influential commodity markets in the world, while trading on the International Order Book offers an easy and cost efficient way of investing.

www.ftse.com/iob



UK INDICES

FTSE UK Index Series

The UK Series is designed to represent the performance of UK companies, providing investors with a comprehensive and complementary set of indices that measure the performance of all capital and industry segments of the UK equity market.

FTSE 100 Index

The FTSE 100 is a market-capitalisation weighted index representing the performance of the 100 largest companies traded on the London Stock Exchange, which pass screening for size and liquidity. It is used extensively as a basis for investment products such as derivatives and exchange-traded funds.

FTSE 250 Index

The FTSE 250 Index is capitalisation-weighted index of the mid-capitalised companies traded on the London Stock Exchange. The index is designed to measure the performance of the mid-cap capital and industry segments of the UK market not covered by the large cap FTSE 100 Index, which pass screening for size and liquidity.

FTSE 350 Index

Comprises all constituents from the FTSE 100 and FTSE 250 Indices.

FTSE SmallCap Index

The FTSE SmallCap Index consists of companies outside of the FTSE 350 Index.

FTSE All-Share Index

The FTSE All-Share is a market-capitalisation weighted index representing the performance of all eligible companies listed on the London Stock Exchange's main market, which pass screening for size and liquidity. The FTSE All-Share Index is considered to be the best performance measure of the overall London equity market with the vast majority of UK-focused money invested in funds which track it. The index is the aggregation of the FTSE 100, FTSE 250 and FTSE Small Cap Indices.

FTSE 350 Industry Sectors

All constituents of the FTSE 350 are classified within economic groups, industry sectors and industry subsectors. Each industry sector and economic group is calculated as a separate index.

FTSE 350 Yield Indices

Companies within the FTSE 350 that have an annualised dividend yield above the average yield of the FTSE 350 index are placed in the FTSE Higher Yield Index. Securities with an annualised dividend yield below the average yield of the FTSE 350 are placed in the FTSE Actuaries Lower Yield.

FTSE Fledgling Index

The FTSE Fledgling Index is for UK companies listed on the main market of the London Stock Exchange that are too small to be included in the FTSE All-Share.

www.ftse.com/uk

FTSE AIM Index Series

The FTSE AIM Index Series consists of all eligible companies on the Alternative Investment Market of the London Stock Exchange. All classes of ordinary share are eligible for inclusion in the index. The FTSE AIM Index Series consists of the FTSE AIM UK 50 Index, FTSE AIM 100 Index, FTSE AIM All-Share Index, and the FTSE AIM All-Share Supersector Indices.

www.ftse.com/aim

FTSE techMARK Index Series

The FTSE techMARK Index Series reflects the performance of the innovative technology stocks listed on the London Stock Exchange's techMARK. The industries, as classified by the Industry Classification Benchmark (ICB), give investors exposure to stocks actively involved in technologies shaping markets of the future.

www.ftse.com/techmark

FTSE APCIMS Private Investor Index Series

The FTSE APCIMS Private Investor Index Series provides investors with an objective benchmark against which they are able to measure their investment portfolios, based upon the assumption that they are domestic investors with sterling denominated accounts.

FTSE APCIMS Stock Market Growth Portfolio Index

Aiming for growth/capital appreciation from predominately equity investments.

FTSE APCIMS Stock Market Income Portfolio Index

Aiming for income from equity and fixed interest investments.

FTSE APCIMS Stock Market Balanced Portfolio Index

Aiming for a balance between growth and income.

The index series represents performance for growth-oriented, income and balanced investors, and incorporates returns from FTSE indices representing UK equities, foreign equities, fixed income, commercial property, hedge funds and cash, according to variable percentage weightings set by committee and based upon average allocations across private client investment managers.

www.ftse.com/apcims



ASIA PACIFIC INDICES

FTSE/ASEAN Index Series

FTSE Group and five of the ASEAN exchanges (Bursa Malaysia, Jakarta Stock Exchange, The Philippines Stock Exchange, Singapore Stock Exchange and The Stock Exchange of Thailand) have joined forces to launch a unique and innovative set of indices known as the FTSE/ASEAN Index Series.

The indices aim to provide domestic and global investors with increased financial exposure to ASEAN in the form of a benchmark and tradable index offering opportunities for the creation of investment products such as index-linked funds, ETFs and derivative products.

www.ftse.com/ASEAN

FTSE Asiatop & Asian Sector Index Series

FTSE Group have created a comprehensive range of tradable indices for the Asia equity markets. The indices are the ideal basis for both on-exchange and OTC (over-the-counter) derivative products, mutual funds and ETFs. The universe is the FTSE All-World Index Series, with constituents from the following markets: China (H shares & B shares), Hong Kong (Hong Kong stocks, Red Chips & HSBC), Indonesia, India, Korea, Malaysia, Philippines, Singapore, Taiwan, Thailand, as well as a variety of sector plays.

www.ftse.com/asiansector

FTSE Bursa Malaysia Index Series

FTSE Group and Bursa Malaysia have launched a comprehensive range of real time indices, including Shariah-compliant indices for the Malaysian Market. The indices are designed to measure the performance of the major capital segments and divide the Malaysian market into large, mid, small cap, fledgling and Shariah-compliant, for the first time, offering investors the flexibility to measure and invest in these distinct segments. The FTSE Bursa Malaysia EMAS Index has now been adopted as the market's benchmark.

www.ftse.com/bursamalaysia

FTSE Japan Index

The FTSE Japan Index forms part of the FTSE Global Equity Index Series. It contains over 460 large and mid cap stocks capturing 90% of the Japanese market. The FTSE Japan Index is free float adjusted, liquidity tested and managed by an independent committee to provide the most transparent and predictable view of the market.

www.ftse.com/japan

FTSE Kaigai Index

The FTSE Kaigai Index is designed to help Japanese investors to benchmark their international equity investment. The index consists of Large and Mid cap companies from the developed markets of the FTSE All-World Index excluding Japan. To ensure the index is representative of the investable market place, liquidity and free float screens are applied to all companies.

www.ftse.com/kaigai

FTSE MPF Index Series

FTSE Group has developed the Mandatory Provident Fund benchmarks, a tailored solution to meet the complex needs of the Hong Kong investment community. Watson Wyatt and the Hong Kong Investment Funds Association (HKIFA) selected the FTSE All-World Index Series as the base universe for a range of country and regional equity indices currency hedged back into Hong Kong dollars. An industry consultation was undertaken in 2007 to ensure that the indices still reflect current investment opportunities and restrictions.

www.ftse.com/mpf



FTSE SGX Shariah Index Series

FTSE Group and the Singapore Exchange (SGX) have joined forces to create the SGX Shariah Index Series – a series of Shariah compliant indices for Islamic investors. Yasaar Research Inc., the global Shariah consultancy, carries out independent screening of all stocks to ensure Shariah compliance.

www.ftse.com/sgx

FTSE SET Index Series

FTSE Group has partnered with the Stock Exchange of Thailand ('SET') to create the FTSE SET Index Series, designed to provide investors with a comprehensive new suite of indices to enable easier measurement of the major capital segments in Thailand's market. The series includes a new headline FTSE SET Large Cap Index that represents the performance of the top 30 Thai companies (by market capitalisation) that meet the relevant investability screening requirements set by FTSE. This index provides a robust alternative to the existing SET 50 Index, providing investors with a focused and highly liquid headline index based on a smaller basket of stocks.

www.ftse.com/thailand

FTSE ST Index Series

The FTSE ST Index series, including the long-established Straits Times Index, has evolved as part of a new partnership between FTSE, Singapore Exchange (SGX) and Singapore Press Holdings (SPH). The new enhanced suite of indices includes the headline STI and sector indices, and provides a comprehensive index solution for the Singapore market. FTSE's free-float weighting and liquidity screening has also been applied to enable the series to offer greater transparency and liquidity.

www.ftse.com/st

TSEC Taiwan Index Series

The TSEC Taiwan Index Series is a joint venture between the Taiwan Stock Exchange Corporation (TSEC) and FTSE Group. The partnership brings together both local market knowledge and international indexing capabilities providing investors with the tools to gain exposure to the Taiwanese market.

The indices have been designed for trading of derivatives, index-tracking funds, exchange traded funds and performance benchmarks.

www.ftse.com/taiwan

FTSE Vietnam Index Series

A set of two new indices that, for the first time, provide a comprehensive solution for investment in this exciting emerging market. The FTSE Vietnam Index Series represents the performance of Vietnamese companies trading on the Ho Chi Minh Stock Exchange, and comprises a broad market benchmark covering the top 90% of the eligible universe (before the application of investability weightings) and a tradable index that covers a subset of the FTSE Vietnam All-Share Index and comprises companies that have sufficient foreign ownership availability.

www.ftse.com/vietnam

FTSE Xinhua Index Series

FTSE Xinhua Index Limited (FXI) is a unique joint venture company that combines the expertise in international indexing of FTSE Group with the local Chinese market knowledge and data capabilities of Xinhua Finance. FTSE Xinhua indices are the world's first comprehensive and transparent series for tracking China's markets, with the creation of broad based benchmarks, large cap tradable indices and sector indices, providing unique coverage of all Chinese share classes for different investors.

China has a unique regulatory environment resulting in various investor classes with differing investment requirements and permissions. Investor class will depend on whether the investor resides in the PRC, and is investing domestically or offshore, or whether they are an international investor wishing to invest into the PRC. Suitable indices in the FTSE Xinhua Index Series for each investor class are highlighted overleaf.

www.ftsexinhua.com



ASIA PACIFIC INDICES (CONTINUED)

FTSE Xinhua Index Series (continued)

INVESTMENT INTO CHINA

Suitable for:

Qualified Foreign Institutional Investors (QFIIs) – international organisations granted licences by the Chinese government to trade all Chinese share types according to a pre-determined/approved investment quota. Appropriate indices include:

FTSE Xinhua A Share Index Series

Comprises indices covering 'A' shares listed on both the Shanghai and Shenzhen Stock Exchanges that can be used as the basis for tracker and mutual funds, structured and derivative products as well as being performance benchmarks. The series includes:

- **FTSE Xinhua All-Share Index** – The benchmark index in the FTSE Xinhua A Share Index Series, including all eligible 'A' shares in China, aiming to represent 95% of the full market value of the 'A' share market. This index is more commonly used by domestic Chinese investors but can also be used by international investors who want to track activity in the domestic Chinese market.
- **FTSE/Xinhua China A50 Index** – A real-time, tradable index comprising the largest 50 'A' Share companies by full market capitalisation. Specifically designed to meet the needs of QFIIs, it can be used as a basis for both on exchange and OTC derivative products, mutual funds and ETFs. The FXI China A50 Index offers the optimal balance between representation and tradability for China's 'A' share market.

FTSE Xinhua China B Index Series

Comprises indices covering 'B' shares listed on both the Shanghai and Shenzhen Stock Exchanges that can be used as the basis for tracker and mutual funds, structured and derivative products as well as being performance benchmarks. The series includes the FTSE Xinhua China B Index and FTSE Xinhua China B35 Index.

Other indices include:

FTSE Xinhua 200 Composite Index – reflecting the combined performance of the domestic equity and bond markets of mainland China.

FTSE Xinhua China Government Bond Index – representing the performance of the mainland Chinese bond market and including the government bonds that trade on the Shanghai and Shenzhen Stock Exchanges.

Other international investors – non-QFII institutional investors seeking exposure to Chinese companies that they can access through H Share and Red Chip stocks listed on the Hong Kong Stock Exchange. Appropriate indices include:

FTSE/Xinhua China 25 Index – a real-time, tradable index which offers the optimal representation of China blue chip stocks by including the largest 25 Chinese companies comprising H Shares and Red Chip Shares, ranked by total market capitalisation and listed and trading on the Hong Kong Stock Exchange.

FTSE/Xinhua China A50 Index – A real-time, tradable index comprising the largest 50 'A' Share companies by full market capitalisation. Specifically designed to meet the needs of QFIIs, it has been used as a basis for both on exchange and OTC derivative products, mutual funds and ETFs available to non-QFII investors. The FXI China A50 Index offers the optimal balance between representation and tradability for China's 'A' share market.

INVESTMENT OUTSIDE CHINA

Suitable for:

Qualified Domestic Institutional Investors (QDII) – members of the People's Republic of China (PRC) with appropriate regulatory permissions enabling them to invest outside mainland China. Appropriate indices include:

FTSE Global Equity Index Series – a global index series covering over 8,000 securities in 48 different countries and capturing 98% of the world's investable market capitalisation – covering every equity and sector relevant to international investors' needs. (See pages 6-7 for further information).

Other indices include:

FTSE Xinhua Hong Kong Index – A benchmark index comprising companies from FTSE's Global Equity Index Series (GEIS), including Red Chips, ordinary Hong Kong listed stocks from the FTSE Hong Kong Index (Large/Mid cap), H share constituents from the FTSE China Index (Large/Mid cap) and HSBC.

FTSE/Xinhua China 25 Index – A real-time, tradable index which offers the optimal representation of China blue chip stocks by including the largest 25 Chinese companies comprising H Shares and Red Chip Shares, ranked by total market capitalisation and listed and trading on the Hong Kong Stock Exchange.



For a full list of indices within the FTSE Xinhua Index Series, please visit www.ftsexinhua.com

US INDICES

FTSE NASDAQ Index Series

FTSE and NASDAQ have brought together the experience of two global financial services brands to produce a new perspective for those wanting to invest in one of the world's most dynamic markets. The FTSE NASDAQ Index Series consists of four indices segmenting what was the first, and is the largest US electronic stock market. NASDAQ contains approximately 3,200 companies, more than any other US market and on average trades more shares per day. There are now more ways to measure, invest and trade the NASDAQ market.

The series uses FTSE's standard global methodology to create the four indices with exciting new opportunities for index-linked products.

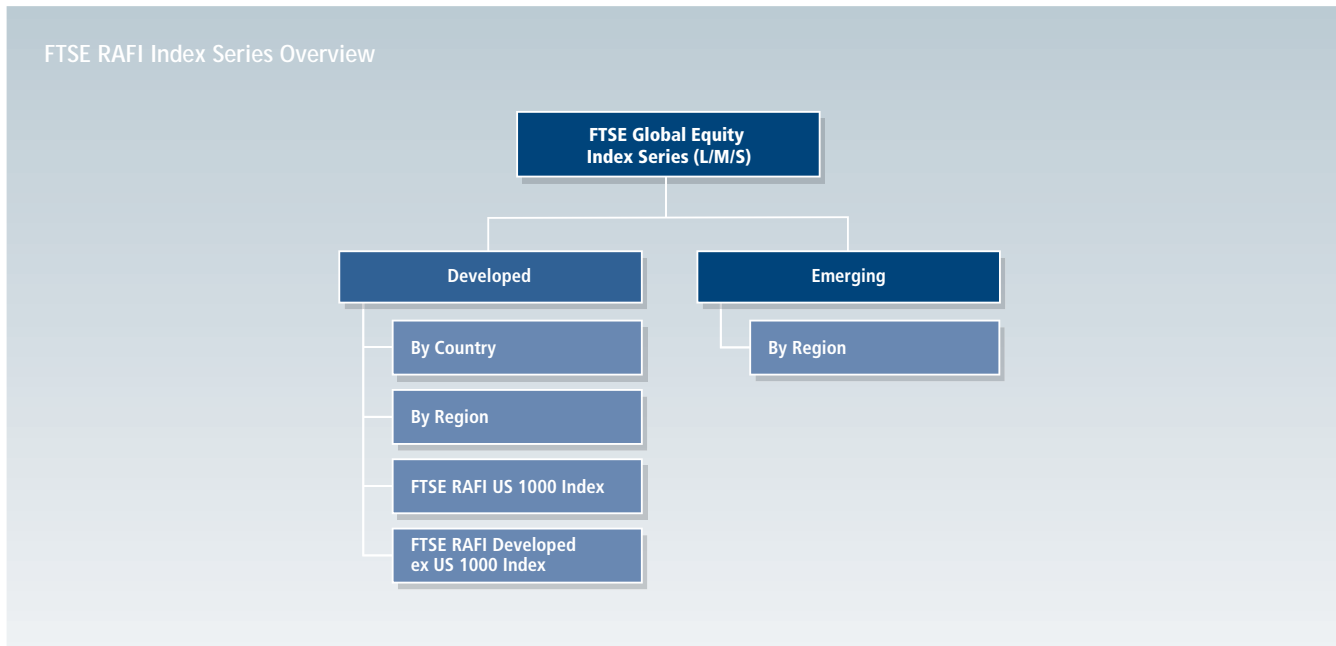
The indices are:

- FTSE NASDAQ 500
- FTSE NASDAQ Large Cap
- FTSE NASDAQ Mid Cap
- FTSE NASDAQ Small Cap

www.ftse.com/nasdaq

Investment Strategy Indices

FTSE RAFI INDEX SERIES



FTSE RAFI Index Series

FTSE Group have partnered with Research Affiliates to create the innovative FTSE RAFI Index Series. As part of FTSE's range of non-market cap weighted indices, index constituents are weighted using a composite of fundamental factors, rather than market capitalisation. These factors include total cash dividends, free cash flow, total sales and book equity value. Prices, which can be prone to speculation, are not a component of the weights, so index constituent weights are therefore less affected by market bubbles that can over-expose an investor to individual companies, sectors or countries. The FTSE RAFI Index Series provides a non-speculative, long-term complement to traditional market cap weighted indices. Indices within the series include:

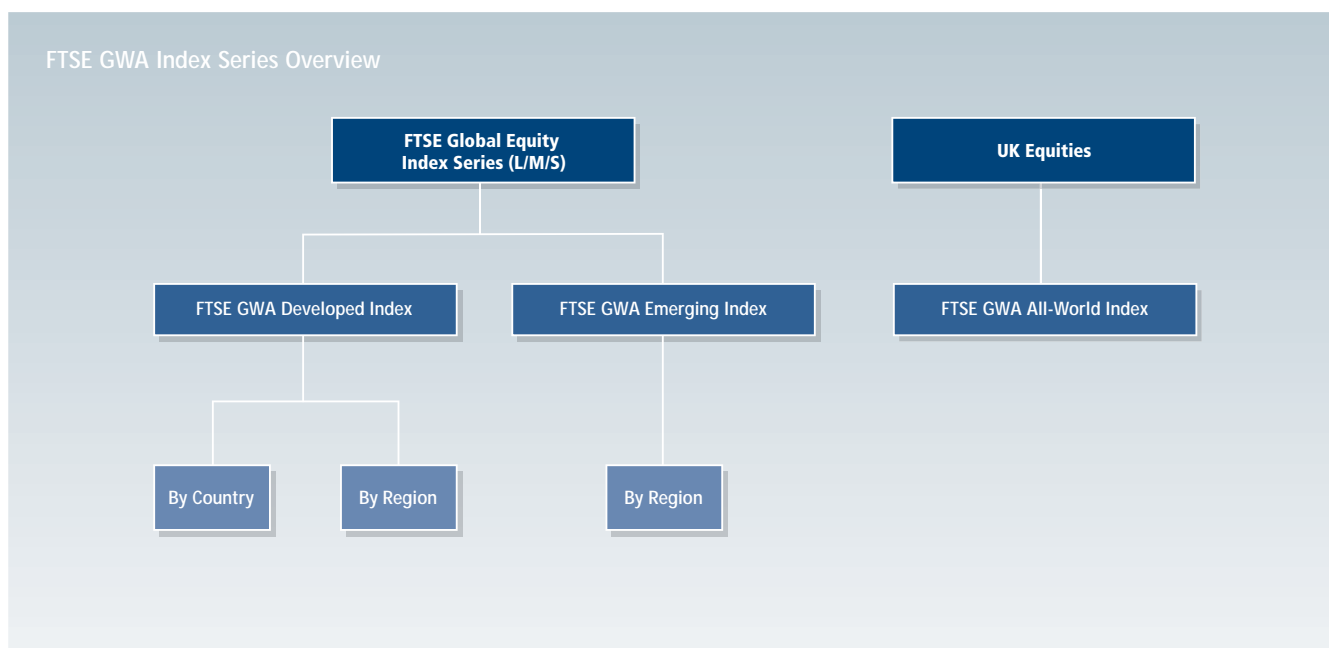
- FTSE RAFI US 1000 Index
- FTSE RAFI Developed ex US 1000 Index
- FTSE RAFI Europe Index
- FTSE RAFI Eurozone Index
- FTSE RAFI Hong Kong/China Index
- FTSE RAFI US 1000 Industry Indexes
- FTSE RAFI Japan Index
- FTSE RAFI Emerging Index
- FTSE RAFI Developed 1000 Index
- FTSE RAFI Real Estate Indexes

Key Features

- FTSE RAFI index-linked products can offer the advantages of an active management strategy with the benefits of passive investment: lower turnover costs and transparent rules-based selection, whilst retaining high investment capacity
- By using fundamental factors rather than prices to weight stocks, reviews of the FTSE RAFI Indices take advantage of price movements by reducing the index's holdings in constituents whose prices have risen relative to other constituents, and increasing holdings in companies whose prices have fallen behind
- Fundamentals weighting does not increase exposure to high P/E stocks during episodes of unsustainable P/E expansion – it therefore avoids over-exposure to the more overvalued stocks
- The indices have been designed to support index-linked funds, ETFs and over-the-counter (OTC) products

www.ftse.com/rafi

FTSE GWA INDEX SERIES



FTSE GWA Index Series

The FTSE GWA Index Series forms part of FTSE's range of Investment Strategy indices. Using the Wealth Allocation methodology developed by Global Wealth Allocation (GWA), the wealth weighted indices break with the traditional market cap weighted design. The methodology uses audited financial statements to attain the three wealth factors: book value, cash flow and net profit. Prices, which can be prone to speculation, are not a component of the wealth weights, so index constituent weights are therefore less affected by market bubbles that can over-expose an investor to individual companies, sectors or countries.

The FTSE GWA Index Series provides a non-speculative, long-term complement to traditional market cap weighted indices. Indices within the series include:

- FTSE GWA All-World Index
- FTSE GWA UK Index
- FTSE GWA US Index
- FTSE GWA Asia Pacific Index
- FTSE GWA Emerging Index
- FTSE GWA Developed Index

Key Features

- A non-speculative, long-term complement to the market cap weighted index
- An active management strategy wrapped in an index with the advantages of passive management: high capacity, transparency and easy implementation
- Wealth weighted strategy to avoid the pitfalls of short-term price volatility and speculation

www.ftse.com/gwa

FTSE UK Dividend+ Index

The FTSE UK Dividend+ Index is a yield weighted index designed to select and measure the performance of higher yielding stocks within the universe of the FTSE 350 Index, excluding investment trusts. The FTSE UK Dividend+ Index selects the top 50 stocks by one-year forecast dividend yield. The constituents' weightings within the index are determined by their dividend yield as opposed to market capitalisation. The FTSE UK Dividend+ Index was created to allow investors to capture the long-term effect of higher compounding returns, and benefit from the lower correlations to traditional market cap weighted indices. The dividend information for the FTSE UK Dividend+ is provided by Markit Group Limited ("Markit"), the leading industry source for independent mark-to-market pricing, asset valuations, dividend forecasting and index services.

www.ftse.com/ukdividendplus

Property & Alternative Investment Indices

FTSE EPRA/NAREIT Global Real Estate Index Series

The FTSE EPRA/NAREIT Global Real Estate Index Series is designed to represent general trends in eligible real estate equities worldwide. Relevant real estate activities are defined as the ownership, disposal and development of income-producing real estate. The index series includes a range of regional and country indices, Dividend+ indices, Global Sectors, Investment Focus, and a REITs and Non-REITs series.

FTSE EPRA/NAREIT Dividend+ Index Series

The FTSE EPRA/NAREIT Dividend+ Index Series selects and measures the performance of higher yielding stocks within the universe of the FTSE EPRA/NAREIT Global Real Estate Index Series. The index series represents stocks that have a one-year forecast dividend yield of 2% or greater which are then weighted by market capitalisation, and enables investors to take advantage of the increasing trend towards Real Estate Investment Trust (REIT) structures and the related advantages of capturing the long-term effect of higher compounding returns.

FTSE EPRA/NAREIT Global REITs and Non-REITs Index Series

The FTSE EPRA/NAREIT Global REITs and Non-REITs Index Series will enable investors to differentiate REIT from Non-REIT constituents within the EPRA/NAREIT universe according to country-specific REIT legislation. As a result of increasing interest in real estate products and specific investment needs, this sub-set of indices will provide investors with additional granularity in the market place.

FTSE EPRA/NAREIT Asia 33 Index

The FTSE EPRA/NAREIT Asia 33 Index enables a more precise assessment of the performance of the 33 largest and most liquid real estate securities from Australia, Hong Kong SAR, Singapore, New Zealand and Japan. Constituents are capped at 10% of the total index to avoid concentration in any one stock.

FTSE EPRA/NAREIT Investment Focus Indices

The FTSE EPRA/NAREIT Investment Focus Indices separates the existing global constituents into both Rental and Non-Rental indices. A company is included in the Rental index if its rental revenue from investment properties is greater than or equal to 70% of total revenue. A company is included in the Non-Rental index if its rental revenue from investment properties is less than 70% of total revenue.

www.ftse.com/epranareit

FTSE NAREIT US Real Estate Index Series

The FTSE NAREIT US Real Estate Index Series presents investors with a comprehensive family of REIT performance indexes that span the commercial real estate space across the US economy, offering exposure to all investment and property sectors. In addition, the more narrowly focused property sector and sub-sector indexes provide the facility to concentrate commercial real estate exposure in more selected markets.

www.ftse.com/nareit



FTSE UK Commercial Property Index Series

The FTSE UK Commercial Property Index Series is designed to reflect the investment performance of retail, office and industrial property in the UK. The indices also provide investors with a more diversified and liquid alternative to investing directly in property. The headline FTSE UK All Property Index has three additional sector indices, giving investors daily performance data on the retail, office and industrial sectors of the UK commercial property market, for the first time. The index series is driven by the performance of the FTSEpx Fund, a dedicated property unit trust. Net Asset Values and Accrued Income figures that make up each index calculation are provided from the fund which is invested in a diverse portfolio of property assets.

www.ftse.com/ukcommercialproperty

FTSE IDFC India Infrastructure Index Series

FTSE has partnered with the Infrastructure Development Finance Company (IDFC) to create an infrastructure index series for the Indian market. Designed to represent the performance of Indian companies that generate the majority of their revenue from infrastructure, the index series provides investors with access to the infrastructure-related sub sectors of the Indian financial market, which have experienced significant growth in recent years.

www.ftse.com/india

FTSE Private Banking Index Series

FTSE have partnered with Private Banking Index Ltd. to develop a unique set of indices for the private banking industry. The index series provide a comprehensive, transparent and industry representative benchmark tool for the investment performance of multi asset class private portfolios.

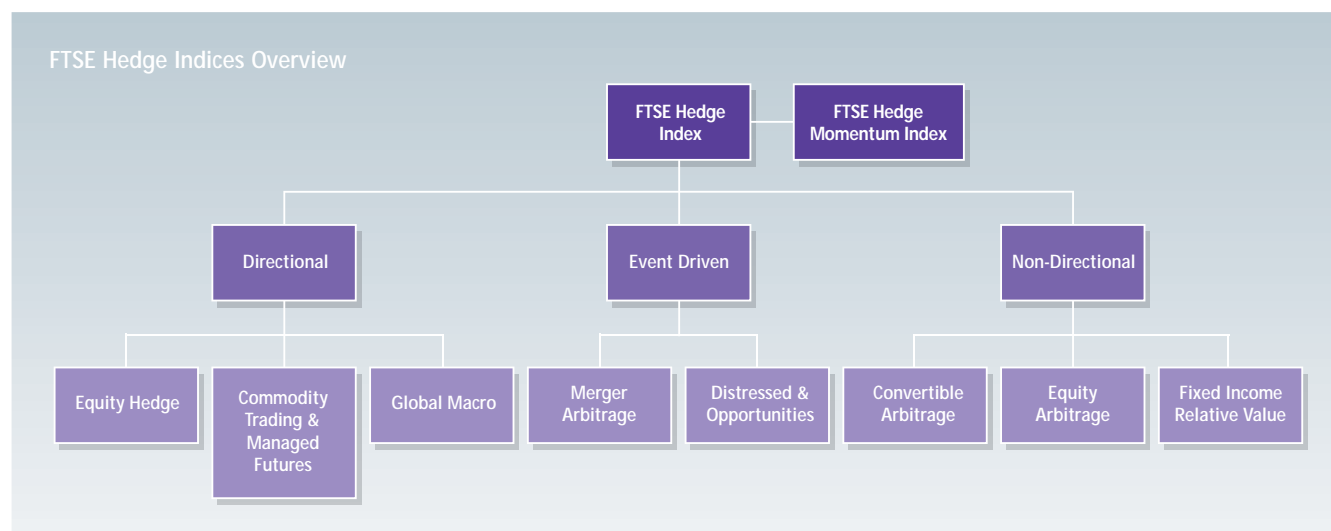
The FTSE Private Banking Index Series provides:

- Private banks and their clients with the ability to measure and benchmark their absolute and relative investment performance against a definitive industry benchmark
- A choice of 12 indices for a range of risk appetite and reference currencies
- An accurate representation of the market, determined by asset allocation input received from private banks, and actual market returns from underlying asset classes
- A basis for financial instruments and investment fund products

www.ftse.com/privatebanking



Property & Alternative Investment Indices (continued)



FTSE Hedge

FTSE Hedge opens the door to the previously complex world of hedge fund investing. It's an investable index that combines complete transparency and accessibility with the proven quality and discipline of FTSE Group's index products and services. FTSE Hedge provides:

- **Confidence** – an index series that reflects the aggregate risk and return characteristics of the open, investable hedge fund universe.
- **Clarity** – an ideal tool to form the basis of liquid, alternative investment products. Its design provides investors with low cost, transparent access to investable hedge funds.
- **Investability** – allows investors to gain exposure to the investable opportunity for hedge funds. Investors in FTSE Hedge will see a pedigree derived from FTSE's vast index experience with a methodology and thoroughness of approach.

The FTSE Hedge Index plays an important role in capturing and delivering the performance and returns of the hedge fund sector in a clear, transparent and representative manner through a methodology that eliminates many of the sector's inherent biases.

The FTSE Hedge Index

- Provides a daily measure of the aggregate risk and return characteristics of the broad-based universe of investable hedge funds.
- Gives investors low cost transparent access to information on representative and diversified investable global hedge funds
- Is the ideal instrument to form the basis of liquid, alternative investment products.
- Is weighted using FTSE's "Investability" methodology.*
- Is structured to provide a broad range of trading strategies, a transparent rule based fund selection and market defining strategy classification.
- Incorporates daily risk monitoring and underlying asset valuation carried out from a unified administrative platform.
- Is re-balanced on an annual basis.

www.ftse.com/hedge

FTSE Hedge Momentum Index

The FTSE Hedge Momentum Index is an investment strategy index designed to outperform the underlying FTSE Hedge Index. This is achieved by over or underweighting constituent funds according to whether or not they demonstrate persistent positive returns (momentum).

*Investability is best viewed as a natural extension of the free-float methodology that FTSE uses for its equity indices. The FTSE Hedge Index construction process is clearly laid out in the "Rules for the Management of FTSE Hedge" ("FTSE Ground Rules") which is available on www.ftse.com/hedge.

Responsible Investment Indices

FTSE has played a significant role in shaping and growing the responsible investment (RI) market since the launch of its FTSE4Good Index Series, generating critical acclaim and interest. FTSE has since further developed a portfolio of responsible investment indices that have been designed to enable easy investment in stocks that meet a variety of environmental and social criteria.

FTSE4Good Index Series

The FTSE4Good Index Series measures the performance of companies that meet globally recognised corporate responsibility standards, and to facilitate investment in those companies. The index series is derived from the globally recognised FTSE Global Equity Index Series, offering FTSE's world-famous hallmark of cutting-edge index design, transparency and calculation technology. Transparent management and criteria make FTSE4Good the index of choice for the creation of broad Responsible Investment products.

The FTSE4Good inclusion criteria represent globally accepted corporate responsibility (CR) standards of good practice as they evolve. Developed using an extensive market consultation process, they are shaped by a broad range of stakeholders including NGOs, governmental bodies, consultants, academics, the investment community and the corporate sector.

The following FTSE4Good Indices are available: Global, Global 100, UK, UK 50, Europe, Europe 50, US, US 100 and Japan.

By using the FTSE4Good Index Series as an investment universe, investors can be assured that companies in their portfolios are evolving to meet new environmental and social standards as they arise. All associated revenue from license agreements is donated by FTSE to UNICEF

www.ftse.com/ftse4good

FTSE4Good Environmental Leaders Europe 40 Index

FTSE4Good Environmental Leaders Europe 40 Index identifies European companies with leading environmental practices. These are the companies that are doing more to manage their environmental risks and impacts whilst reducing their environmental footprint. The index is constructed by taking all European companies in the FTSE4Good Index Series that have obtained the 'best practice' environmental rating of 5, ranking them by full market capitalisation, and then selecting the top 40 to be included in the index.

The index has been designed to be used as the basis of retail and institutional investment products.

www.ftse.com/environmental_leaders



FTSE4Good

FTSE4Good IBEX Index

FTSE Group has partnered with Bolsas y Mercados Españoles (BME) to create the FTSE4Good IBEX Index. The index comprises companies in BME's IBEX 35 Index and the FTSE Spain All Cap Index that meet good standards of practice in corporate responsibility, including environmental sustainability, developing positive relationships with stakeholders and upholding and supporting universal human rights.

The FTSE4Good IBEX Index has corporate responsibility inclusion criteria that are fully transparent and publicly available.

www.ftse.com/IBEX

FTSE ET50 Index

The FTSE ET50 (Environmental Technology) Index was launched in collaboration with the environmental technology specialist, Impax Asset Management. Originally designed and launched by Impax in 1999, the index measures the performance of companies whose core business (ie over 50%) is in the development and deployment of environmental technologies. This includes alternative energy, energy efficiency, water treatment, pollution control and waste management companies.

The original index has been enhanced with the application of FTSE's market-leading international index methodology, leading edge free float weighting and liquidity screening. It has been relaunched as the FTSE ET50 Index, with an independent FTSE Environmental Technology Committee overseeing the index.

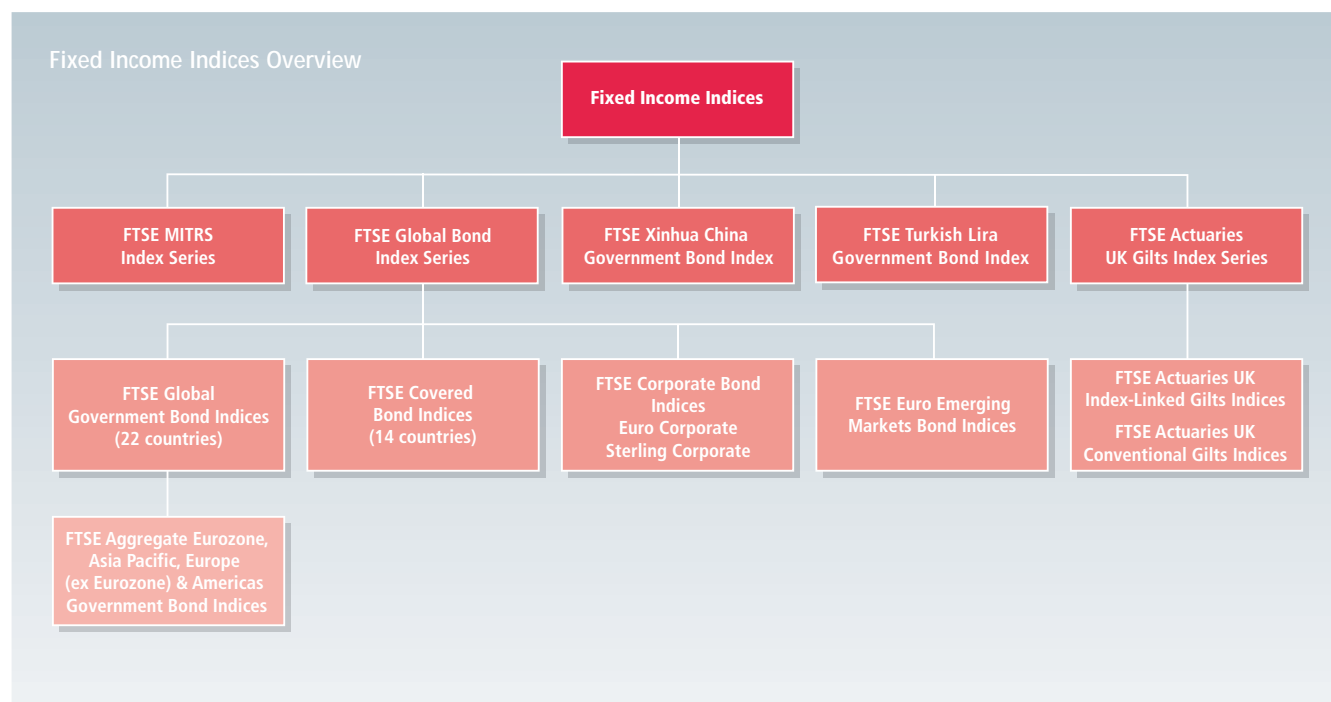
www.ftse.com/ET50

FTSE Environmental Opportunities All-Share Index

This index is also in collaboration with Impax Asset Management, and under the direction of the independent FTSE Environmental Technology Committee. It provides investors with a benchmark consisting of companies who have a significant involvement in environmental technologies and therefore offers an environmental exposure opportunity to investors. It is a global index that includes all constituents of the FTSE Global Equity Index Series that have more than 20% of their business in environmental markets and technologies.

www.ftse.com/EO

Fixed Income Indices



FTSE Actuaries UK Gilts Index Series

The FTSE Actuaries UK Gilts Index Series is a comprehensive family of indices and related bond data (e.g. yield, duration, convexity) covering the conventional Gilt and index-linked Gilt markets. The indices are the premier benchmarks for eligible British Government Securities. There are headline indices plus sub-indices available for a wide range of maturity bands.

Additionally, there is a yield index that provides the term structure of the Gilt market from one year up to 50 years.

www.ftse.com/uk_gilts

FTSE Global Bond Index Series

The FTSE Global Bond Index Series is a family of fixed income indices covering the principal government bond markets and selected corporate markets. The indices are rules-based, consistent and transparent – hallmarks of all FTSE indices. The FTSE Global Bond indices represent relevant, accurate and usable benchmarks for the fixed income markets.

FTSE's independence insures delivery of objective market information, free from conflicts of interest. In addition, FTSE fixed income indices are

overseen by an independent committee of fixed income investment professionals who, in conjunction with the FTSE fixed income group, regularly monitor and review all aspects of the indices.

These indices are unique as they are calculated using indicative pricing from the key dealer banks in each market. Bond prices are filtered through a quality control process to provide the best single price for each constituent.

FTSE continues to enhance and develop the indices in line with market and investor requirements. Furthermore, price and total return indices are available for all the bond markets detailed in the following sections.

FTSE Global Government Bond Indices

The FTSE Global Government Bond Indices consist of central government debt from 22 countries denominated in the domicile currency or Euros for Eurozone countries. There is a Euro aggregate index and the indices are organised by region; Asia Pacific, North America and Eurozone plus a Europe ex Eurozone index. The indices are also available at the country level and by maturity band. In addition, standalone government bond indices are available for China and Turkey.

FTSE Covered Bond Indices

The FTSE Covered Bond Indices consist of securitised issues from 14 countries, including Jumbo Pfandbrief from Germany. Each issue is comparable in structure and quality to the German Jumbo Pfandbrief market. The indices are available at aggregate, country level and by maturity bands.

FTSE Corporate Bond Indices

• FTSE Euro Corporate Bond Index

The FTSE Euro Corporate Bond Index includes Euro denominated issues from global corporate entities. Each bond is classified under the Industry Classification Benchmark (ICB). The index constituents are investment grade debt with a minimum rating of BBB-. Sub-indices are structured by credit rating and maturity band.

• FTSE Sterling Corporate Bond Index

The FTSE Sterling Corporate Bond Index consists of Sterling denominated corporate bonds of investment grade quality. Each bond is classified under the Industry Classification Benchmark (ICB). There are 11 industrial sector sub-indices including Telecommunications, Utilities and Banking. The index has sector rating and maturity sub-indices. Telecommunications and Non-Financials (i.e. the headline index minus Financials) are calculated as additional sub-indices.

FTSE Euro Emerging Markets Bond Indices

The FTSE Euro Emerging Markets Bond Indices include Euro denominated debt issued by governments and cities belonging to the emerging markets, as defined by the FTSE Country Classification. The sub-indices are structured by maturity band.

www.ftse.com/fixedincome

FTSE MTIRS Index Series

FTSE has produced a series of Interest Rate Swaps Indices under the banner the FTSE MTIRS Index Series. The index series comprises 45 indices covering the US Dollar Swap Curve, with tenors from 2 to 30 years, including spread and butterfly trades. The index series tracks the performance of the market by calculating the net present value (NPV) of cash flows in real-time, which reflects the movement in the underlying fixed-for-floating interest rate swaps market. The FTSE MTIRS Index Series has been created both for use as benchmarks and to allow market participants to trade the indices. Benefits include standardisation of trade details, reduced transaction costs, transparency of pricing, and alleviation of the need for back office monitoring of positions and calculation of position values.

www.ftse.com/mtirs



The FTSE MTIRS Index Series comprises the following indices:

- Interest Rate Swaps – 29 indices: 2 to 30-year swaps
- Swaps Spreads – 10 indices: combinations of benchmark tenors: 2x3, 2x5, 2x10, 2x30, 3x5, 3x10, 3x30, 5x10, 5x30 & 10x30
- Butterfly Swaps – 6 indices: combinations of benchmark tenors: 2x3x5, 2x5x10, 2x10x30, 3x5x10, 3x10x30 & 5x10x30

FTSE Turkish Lira Government Bond Index

The FTSE Turkish Lira Government Bond Index offers clients a relevant, accurate and usable index that measures the performance of the domestic Turkish Government Bond market. Investment interest in the Turkish Government Bond market has grown due to Turkey's increasing economic performance and stability. The index is constructed from Turkish Government Bonds with a minimum nominal amount outstanding of 1,000 million Turkish Lira and includes both straight (bullet) bonds and zero coupon bonds. In October 2007, an ETF based on the FTSE Turkish Lira Government Bond Index was launched as the first fixed income ETF in emerging European markets. The ETF, awarded the 'Most Innovative ETF' at the Global ETF Awards 2008, is listed on the Istanbul Stock Exchange and gives investors access to this market's returns.

FTSE Xinhua China Government Bond Index

The FTSE Xinhua China Government Bond Index is designed to represent the performance of mainland China Government bonds. It includes Government bonds that trade on the Shanghai and Shenzhen stock exchanges. Both capital and total return indices are calculated and published in Chinese RenMinBi (CNY) for both real-time and for end-of-day index values.

FTSE Product Packages

FTSE data products provide detailed constituent and index level data for over 120,000 indices. The data products offer a choice of service options to meet all requirements.

Option 1 – Standard Package

- Index Valuation Service
- Constituent Service
- Tracker Service

Option One is available for all FTSE index series.

Option 2 – Advanced Service

This service combines all three Option One service files with additional data items. The deeper data set enables users to carry out detailed analysis for stock attribution or performance measurement. Highlights include:

- Adjusted price
- Pre-calculated stock price returns (adjusted for splits) for one day, one month and year-to-date
- Actual dividends
- Pre-calculated stock total returns (i.e. with dividends reinvested) for one day, one month and year-to-date

Both services can be distributed directly from FTSE via FTP or from one of FTSE's third party distributors.

Option Two offers an expanded set of data including dividends, risk data and calculated returns and is available for FTSE Global Equity Index Series (All-World & Multinationals), FTSEurofirst 300, FTSE UK All-Share and Actuaries UK Gilts.

File Descriptions

Index Valuation Service

The Index Valuation Service provides index level data in USD, Sterling, Euro, Yen and local currency.

Constituent Service

The Constituent Service (delivered on a daily or monthly basis) provides index constituent data including market capitalisation, free float factor and index weighting.

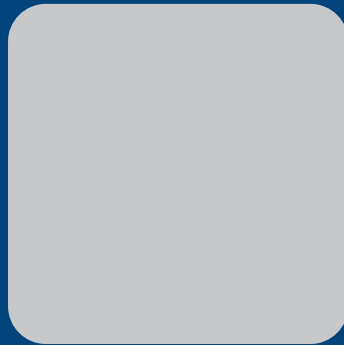
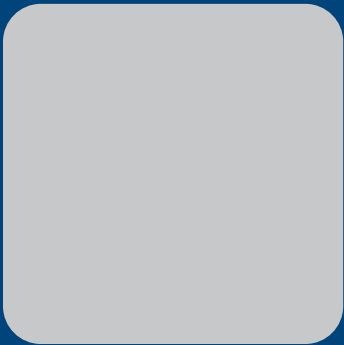
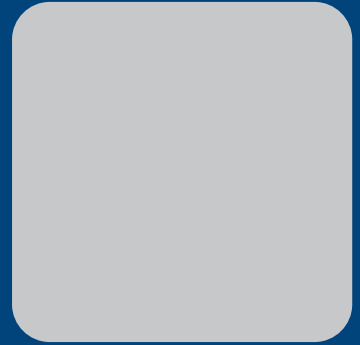
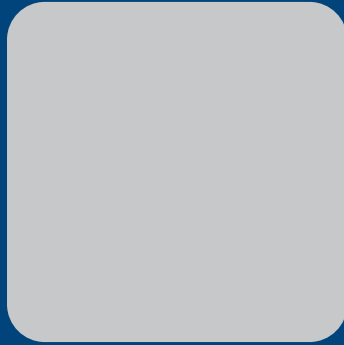
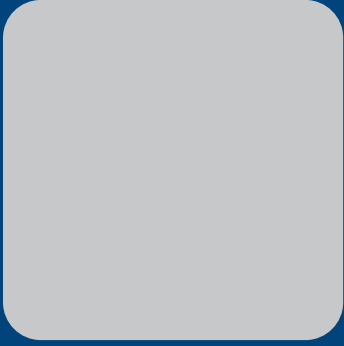
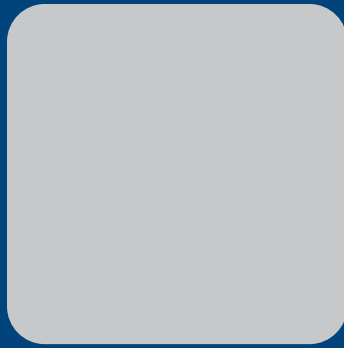
Tracker and Open Constituent Service

The FTSE Tracker Service highlights corporate actions, dividend activity and other changes to the index and company constituents on a daily basis (available for both Option One and Option Two packages).

A Five Day Tracker service provides index change information five days in advance of the change. The Open Constituent Service provides the opening index positions for start of day trading.







FOR FURTHER INFORMATION VISIT WWW.FTSE.COM, EMAIL INFO@FTSE.COM OR CALL YOUR LOCAL FTSE OFFICE:
 LONDON +44 (0) 20 7866 1810 BOSTON +1 888 747 FTSE (3873) FRANKFURT +49 (0) 69 156 85 144 HONG KONG +852 2230 5800 BEIJING + 86 10 5864 5277 MADRID +34 91 411 3787
 NEW YORK +1 888 747 FTSE (3873) PARIS +33 (0) 1 53 76 82 88 SAN FRANCISCO +1 888 747 FTSE (3873) SYDNEY +61 2 9293 2866 TOKYO +81 3 3581 2811

© FTSE International Limited ("FTSE") 2008. All rights reserved.

"FTSE", "FT-SE", "Footsie" and "FTSE4Good" are trade marks of the London Stock Exchange Plc and The Financial Times Limited and are used by FTSE under licence. "All-Share" and "All-World" are trade marks of FTSE. All other trade marks referred to within this brochure are the trade marks of FTSE and/or its partners. All of the indices referred to within this brochure ("Indices") are calculated by FTSE and/or its relevant licensed partners. All rights in and to the Indices vest in FTSE and/or its relevant partners. No part of this publication may be reproduced, stored in a retrieval system or transmitted by any other form or means whether electronic, mechanical, photocopying, recording or otherwise without the prior permission of FTSE. All information is provided for information purposes only. Whilst every effort is made to ensure that all information given by FTSE and its relevant partners within this publication is accurate, no responsibility or liability can be accepted by FTSE and its relevant partners for any errors, omissions and/or inaccuracies or for any loss arising from use of this publication. Distribution of FTSE index values and the use of the Indices to create financial products requires a licence from FTSE and/or its licensors.

06/08

