

FTSE4Good benchmark and tradable indices have been designed to measure the performance of companies that meet globally recognized social responsibility standards, and to facilitate investment in those companies. This analysis is produced by FTSE Research. For more information about market analysis based upon FTSE indices, please e-mail Andy Harvell, Head of Research, FTSE Group, at andy.harvell@ftse.com.

For further information on the index criteria, please e-mail david.harris@ftse.com or visit <http://www.ftse.com/ftse4good>. For marketing-related queries on the FTSE4Good Index Series, please e-mail fiona.mcfadzean@ftse.com.

Benchmark Indices – Total Returns

	1M	3M	12M	3YR	5YR	3YR Vol (pa)	5YR Vol (pa)
FTSE4Good Global (USD/%)	-1.5	-11.0	-3.0	28.3	104.9	9.6	10.1
FTSE4Good US (USD/%)	-5.8	-13.2	-8.9	10.0	53.9	10.2	10.1
FTSE4Good Europe (EUR/%)	-1.5	-14.0	-12.0	24.1	88.3	11.5	11.3
FTSE4Good Japan (JPY/%)	-1.9	-13.0	-22.6	20.1	63.2	14.6	13.6
FTSE4Good UK (GBP/%)	-0.1	-8.8	-5.8	23.5	82.0	10.1	9.5

Tradable Indices – Total Returns

	1M	3M	12M	3YR	5YR	3YR Vol (pa)	5YR Vol (pa)
FTSE4Good Global Index 100 (USD/%)	-2.7	-12.5	-4.2	19.9	77.6	9.6	9.9
FTSE4Good US 100 Index (USD/%)	-5.8	-13.3	-8.5	8.8	47.5	10.2	10.0
FTSE4Good Europe 50 Index (EUR/%)	-2.1	-15.0	-12.2	15.9	66.1	11.3	11.0
FTSE4Good UK 50 Index (GBP/%)	0.0	-8.7	-2.4	26.6	81.5	9.8	9.2

Comparative Tradables – Total Returns

	1M	3M	12M	3YR	5YR	3YR Vol (pa)	5YR Vol (pa)
FTSE Developed Large Cap Index (USD/%)	-0.6	-9.6	1.4	32.8	109.5	9.2	9.4
FTSE US Large Cap Index (USD/%)	-3.2	-9.6	-2.5	17.8	68.4	8.6	8.7
FTSEurofirst 100 Index (EUR/%)	-1.4	-14.2	-7.3	27.2	83.8	11.7	11.2
FTSE 100 Index (GBP/%)	0.5	-8.1	-1.3	31.0	90.8	10.1	9.4

Universe Benchmark – Total Returns

	1M	3M	12M	3YR	5YR	3YR Vol (pa)	5YR Vol (pa)
FTSE Developed Index (USD/%)	-0.6	-9.4	0.4	33.8	118.5	9.4	9.7
FTSE US Index (USD/%)	-3.2	-9.6	-3.3	19.0	76.6	8.7	9.0
FTSE Developed Europe Index (EUR/%)	-0.8	-13.5	-9.2	32.0	102.5	11.7	11.3
FTSE Japan Index (JPY/%)	-1.6	-13.4	-23.0	20.9	74.2	14.8	14.0
FTSE All-Share Index (GBP/%)	0.8	-7.7	-2.7	32.9	101.6	10.3	9.6

FTSE4Good Global Stock Price Performance (USD/%)

Best Total Return Performers over the Month

Yahoo	USA	44.8
Norsk Hydro	NOR	22.9
Yara International	NOR	20.7
StatoilHydro ASA	NOR	20.6
Sanken Electric	JA	20.2

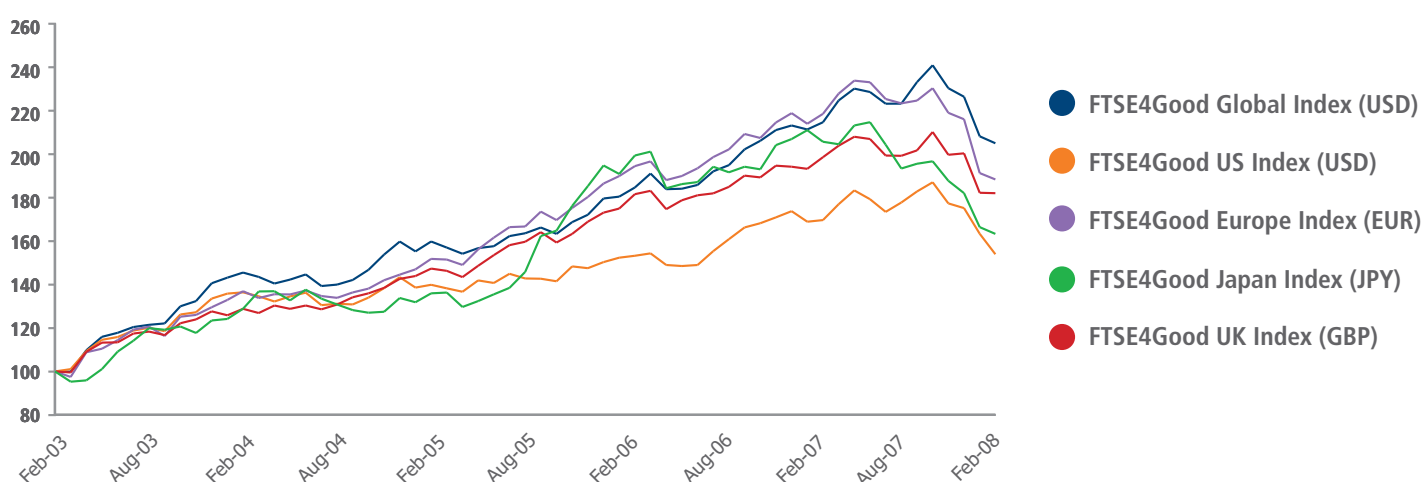
Worst Total Return Performers over the Month

Idearc	USA	-70.3
Thomson SA	FRA	-35.6
Level 3 Communications	USA	-35.2
Yell Group	UK	-33.9
Sprint Nextel	USA	-32.5

Total Market Capitalisation and Number of Stocks

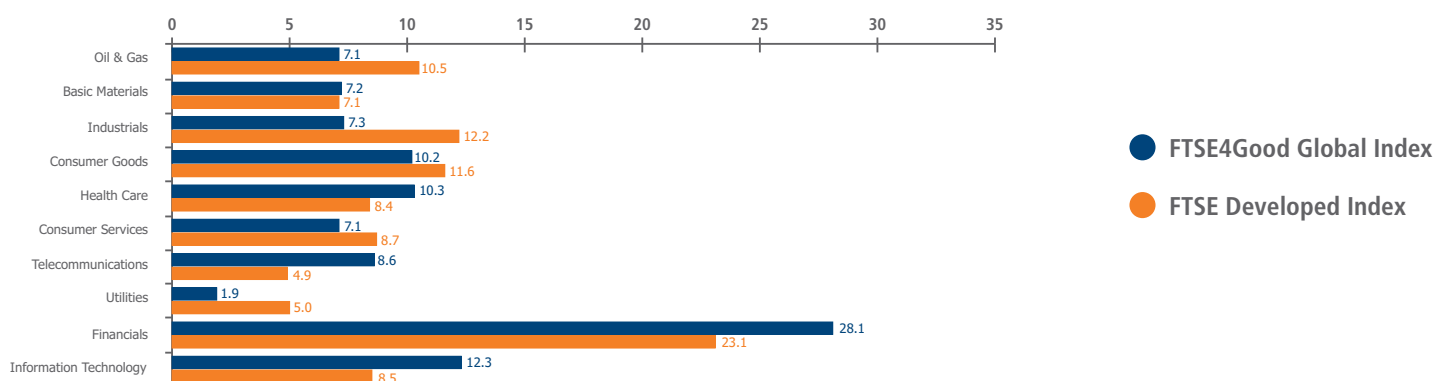
	Mkt Cap	Stocks
FTSE4Good Global Index (USDbn)	13,382.3	689
FTSE4Good Global 100 Index (USDbn)	8,168.6	105
FTSE4Good US Index (USDbn)	4,458.2	145
FTSE4Good US 100 Index (USDbn)	4,250.8	101
FTSE4Good Europe Index (EURbn)	4,372.0	289
FTSE4Good Europe 50 Index (EURbn)	2,734.2	55
FTSE4Good Japan Index (JPYbn)	139,161.0	190
FTSE4Good UK Index (GBPbn)	1,314.1	271
FTSE4Good UK 50 Index (GBPbn)	1,086.7	51

FTSE4Good Benchmark Indices 5-Year Total Return Performance (in local currencies)

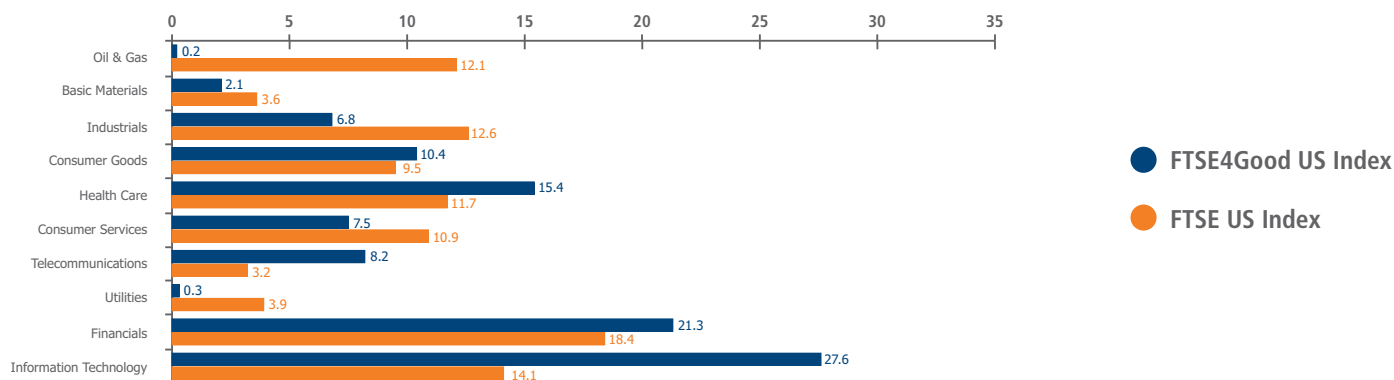


FTSE4Good Industry Weights

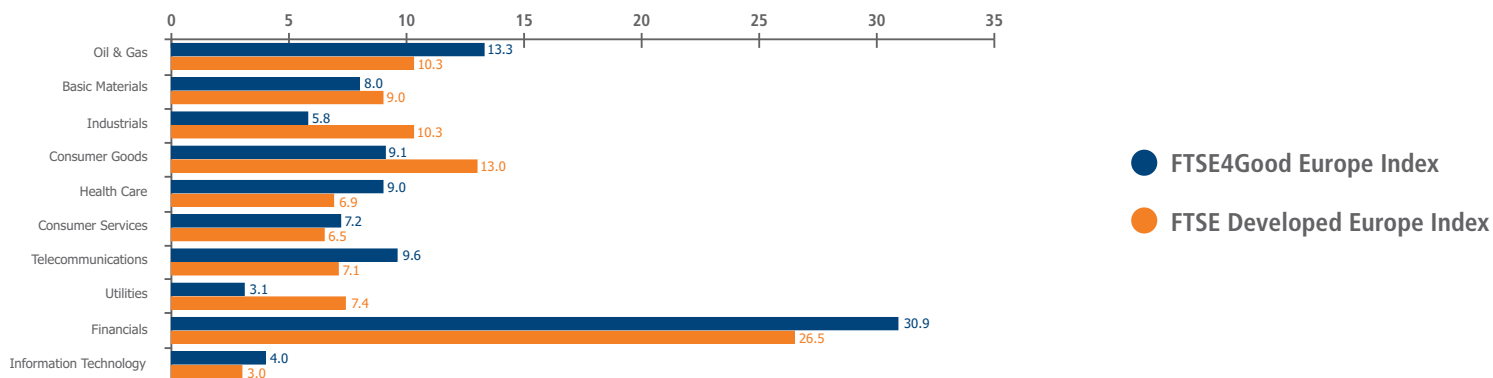
Global Industry Weights (%)



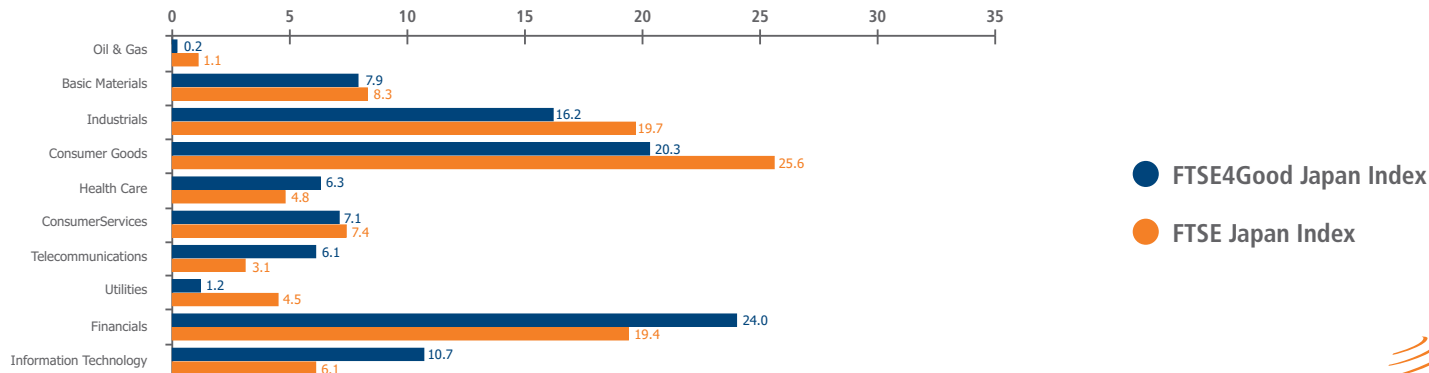
US Industry Weights (%)



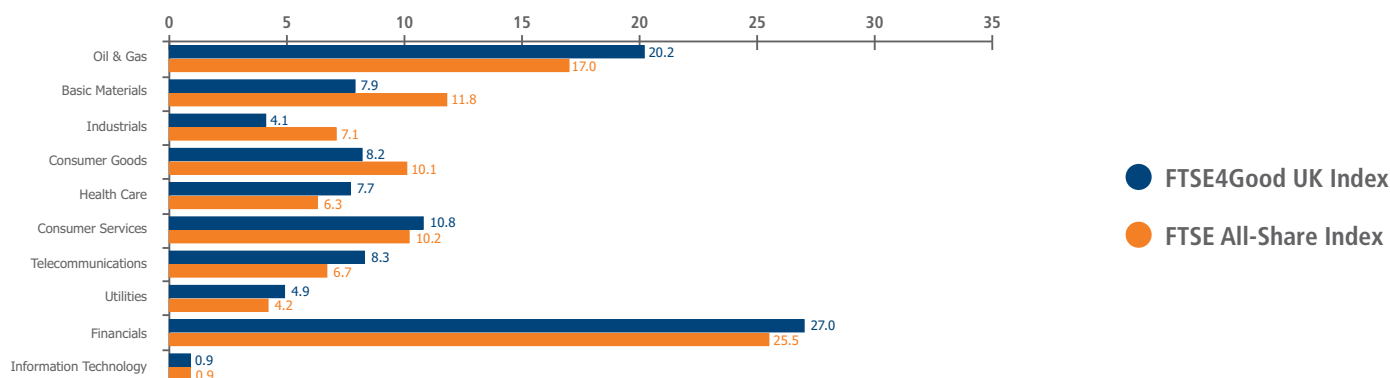
Europe Industry Weights (%)



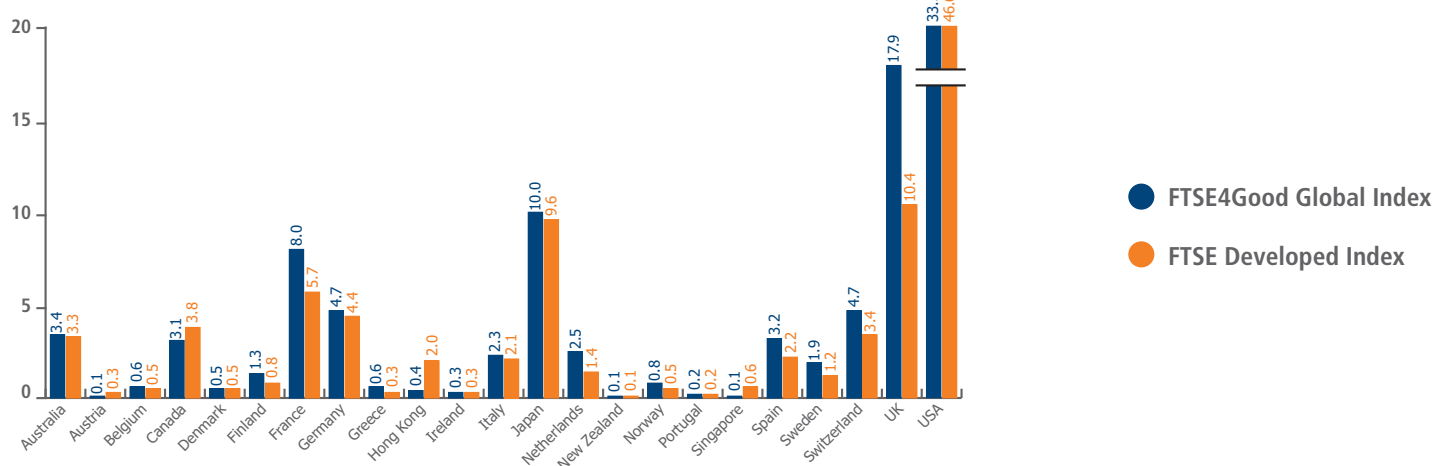
Japan Industry Weights (%)



UK Industry Weights (%)



FTSE4Good Global Country Weights (%)



Top 10 Stocks by Investable Market Capitalisation

FTSE4Good Global Index	Mkt Cap (USDbn)	Wgt (%)	FTSE4Good US Index	Mkt Cap (USDbn)	Wgt (%)
Microsoft Corp	255.2	1.9	Microsoft Corp	255.2	5.7
AT&T	212.4	1.6	AT&T	212.4	4.8
BP	206.3	1.5	Procter & Gamble	206.2	4.6
Procter & Gamble	206.2	1.5	Johnson & Johnson	177.3	4.0
Total	181.5	1.4	Bank of America	177.2	4.0
HSBC Hldgs	180.0	1.3	Pfizer	152.2	3.4
Johnson & Johnson	177.3	1.3	Cisco Systems	147.9	3.3
Bank of America	177.2	1.3	Coca-Cola	135.4	3.0
Vodafone Group	170.1	1.3	Hewlett-Packard	123.6	2.8
Pfizer	152.2	1.1	Citigroup	121.7	2.7

FTSE4Good Europe Index	Mkt Cap (EURbn)	Wgt (%)	FTSE4Good Japan Index	Mkt Cap (JPYbn)	Wgt (%)
BP	135.8	3.1	Mitsubishi UFJ Financial	10,180.6	7.3
Total	119.6	2.7	Canon	6,416.7	4.6
HSBC Hldgs	118.5	2.7	Sumitomo Mitsui Financial Group	5,923.7	4.3
Vodafone Group	112.0	2.6	Matsushita Electric Ind	5,471.1	3.9
Nokia	92.7	2.1	Sony Corp	4,976.1	3.6
Telefonica	91.8	2.1	Mitsubishi Corp	4,113.3	3.0
Roche Hldgs (GENUS)	90.8	2.1	Takeda Pharmaceutical	3,908.4	2.8
Royal Dutch Shell A	85.0	1.9	Nomura Holdings	3,307.6	2.4
GlaxoSmithKline	79.6	1.8	Mitsui & Co	3,123.7	2.2
Novartis (REGD)	75.8	1.7	NTT Docomo	2,862.9	2.1

FTSE4Good UK Index	Mkt Cap (GBPbn)	Wgt (%)
BP	103.8	7.9
HSBC Hldgs	90.6	6.9
Vodafone Group	85.6	6.5
Royal Dutch Shell A	64.9	4.9
GlaxoSmithKline	60.8	4.6
Rio Tinto	57.3	4.4
Royal Dutch Shell B	49.3	3.7
BG Group	40.2	3.1
Royal Bank Of Scotland Group	38.8	3.0
BHP Billiton	36.8	2.8

Sources: FTSE Group, Datastream and Reuters.

For more information please contact info@ftse.com

© FTSE International Limited ("FTSE") 2008. All rights reserved.

"FTSE" and "FTSE4Good" are trade and service marks of the London Stock Exchange Plc and The Financial Times Limited and are used by FTSE licence. "All-Share" is a trade and service mark of FTSE. All rights in and to the FTSE4Good Index Series vest within in FTSE and/or its licensors (including Euronext N.V.). All information is provided for information purposes only and no responsibility or liability can be accepted by FTSE and/or its licensors for any errors, inaccuracies and/or omissions or for any loss from use of this publication. No part of this publication may be reproduced, stored in a retrieval system or transmitted by any other form or means whether electronic, mechanical, photocopying, recording or otherwise without the prior written consent of FTSE. The Industry Classification Benchmark ("ICB") is a joint product of FTSE and Dow Jones & Company, Inc ("Dow Jones"). "Dow Jones" and "DJ" are trade and service marks of Dow Jones. FTSE and Dow Jones do not accept any liability to any person for any loss or damage arising out of any error or omission in the ICB. Distribution of FTSE index values and the use of FTSE indices to create financial products requires a licence from FTSE.