

FTSE4Good benchmark and tradable indices have been designed to measure the performance of companies that meet globally recognized social responsibility standards, and to facilitate investment in those companies. This analysis is produced by FTSE Research. For more information about market analysis based upon FTSE indices, please e-mail Andy Harvell, Head of Research, FTSE Group, at andy.harvell@ftse.com.

For further information on the index criteria, please e-mail david.harris@ftse.com or visit <http://www.ftse.com/ftse4good>. For marketing-related queries on the FTSE4Good Index Series, please e-mail fiona.mcfadzean@ftse.com.

Benchmark Indices – Total Returns

	1M	3M	12M	3YR	5YR	3YR Vol (pa)	5YR Vol (pa)
FTSE4Good Global (USD/%)	0.7	6.1	-5.5	38.7	87.6	9.9	9.5
FTSE4Good US (USD/%)	1.1	5.7	-11.2	14.7	42.0	10.2	9.6
FTSE4Good Europe (EUR/%)	0.3	3.4	-16.7	24.6	76.2	12.1	10.8
FTSE4Good Japan (JPY/%)	3.4	8.9	-16.6	34.3	75.8	16.9	14.9
FTSE4Good UK (GBP/%)	-0.5	4.0	-9.0	27.3	67.1	10.5	9.1

Tradable Indices – Total Returns

	1M	3M	12M	3YR	5YR	3YR Vol (pa)	5YR Vol (pa)
FTSE4Good Global Index 100 (USD/%)	0.2	6.4	-6.0	28.8	65.0	10.0	9.4
FTSE4Good US 100 Index (USD/%)	0.8	5.6	-10.8	13.2	37.0	10.3	9.5
FTSE4Good Europe 50 Index (EUR/%)	-0.3	3.6	-16.0	15.9	56.7	12.2	10.7
FTSE4Good UK 50 Index (GBP/%)	-0.5	5.0	-4.8	31.2	70.1	10.4	9.0

Comparative Tradables – Total Returns

	1M	3M	12M	3YR	5YR	3YR Vol (pa)	5YR Vol (pa)
FTSE Developed Large Cap Index (USD/%)	1.2	5.6	-2.3	43.3	94.0	9.3	8.9
FTSE US Large Cap Index (USD/%)	1.0	5.1	-6.1	24.2	55.1	8.6	8.2
FTSEurofirst 100 Index (EUR/%)	0.5	3.8	-13.1	28.5	76.6	12.3	10.9
FTSE 100 Index (GBP/%)	-0.2	4.5	-5.1	35.4	77.6	10.5	9.2

Universe Benchmark – Total Returns

	1M	3M	12M	3YR	5YR	3YR Vol (pa)	5YR Vol (pa)
FTSE Developed Index (USD/%)	1.5	6.0	-2.9	44.6	101.5	9.5	9.1
FTSE US Index (USD/%)	1.6	5.9	-6.1	26.1	62.5	8.8	8.4
FTSE Developed Europe Index (EUR/%)	0.9	3.6	-15.0	32.9	91.4	12.1	10.8
FTSE Japan Index (JPY/%)	3.5	7.3	-18.3	32.3	85.7	16.8	15.1
FTSE All-Share Index (GBP/%)	-0.2	3.9	-7.1	37.1	84.6	10.5	9.2



FTSE4Good Global Stock Price Performance (USD/%)

Best Total Return Performers over the Month

Chiyoda Corp	JA	42.1
Lintec Corp	JA	38.6
NHK Spring Co	JA	30.0
Fujitsu	JA	27.6
Teradata	USA	26.9

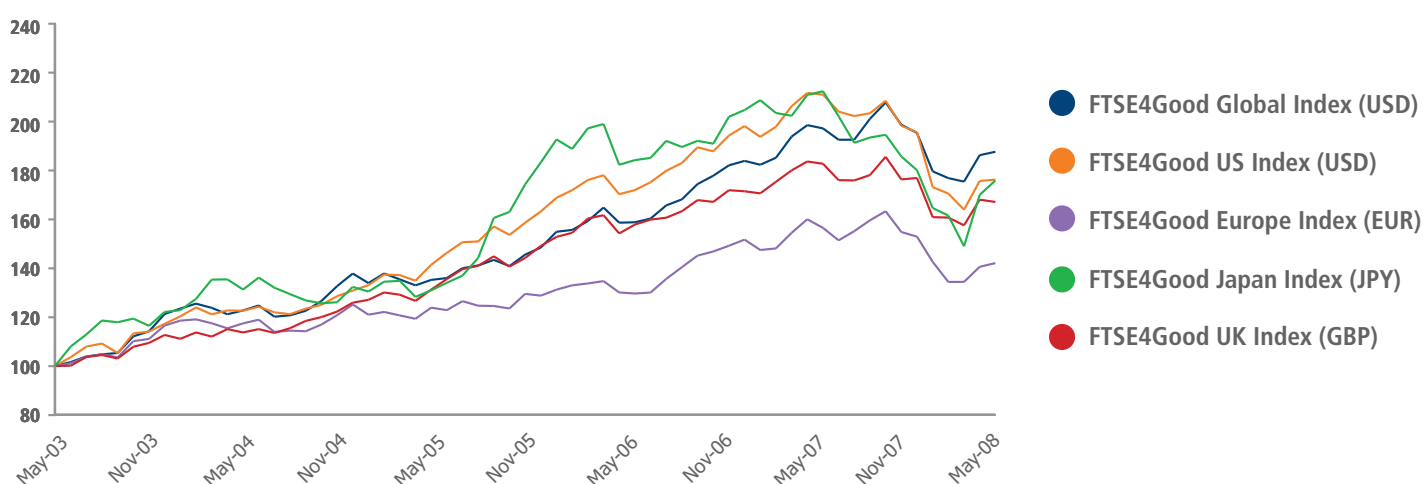
Worst Total Return Performers over the Month

Bradford & Bingley	UK	-46.1
Barratt Developments	UK	-34.1
Yell Group	UK	-24.1
UBS AG	SWIT	-23.4
Royal Bank Of Scotland Group	UK	-23.0

Total Market Capitalisation and Number of Stocks

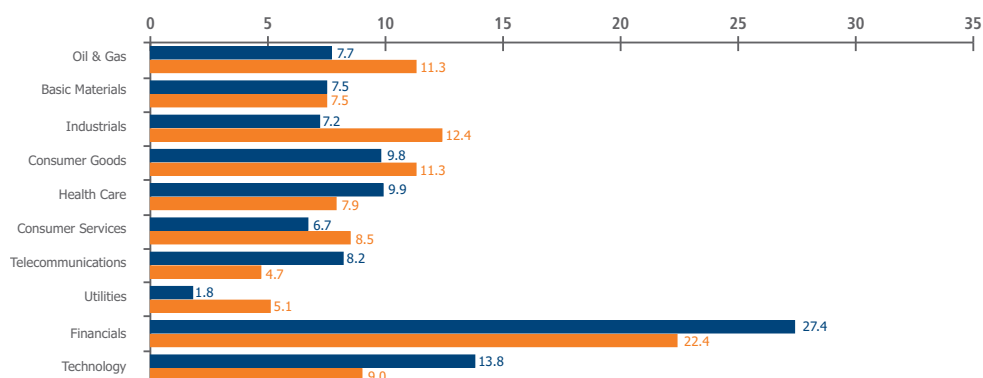
	Mkt Cap	Stocks
FTSE4Good Global Index (USDbn)	14,134.2	706
FTSE4Good Global 100 Index (USDbn)	8,717.6	105
FTSE4Good US Index (USDbn)	4,780.2	148
FTSE4Good US 100 Index (USDbn)	4,544.5	101
FTSE4Good Europe Index (EURbn)	4,429.2	294

FTSE4Good Benchmark Indices 5-Year Total Return Performance (in local currencies)



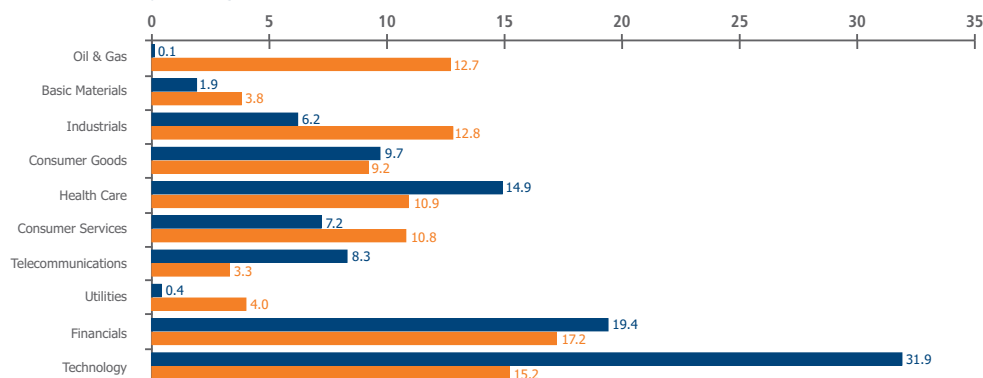
FTSE4Good Industry Weights

Global Industry Weights (%)



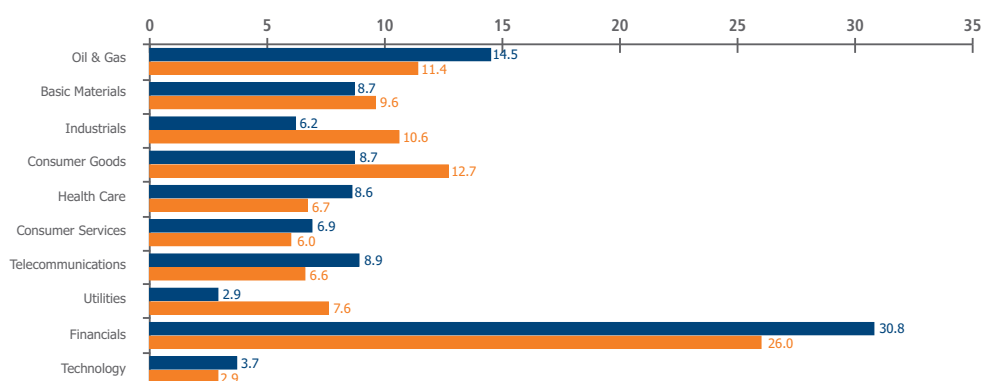
- FTSE4Good Global Index
- FTSE Developed Index

US Industry Weights (%)



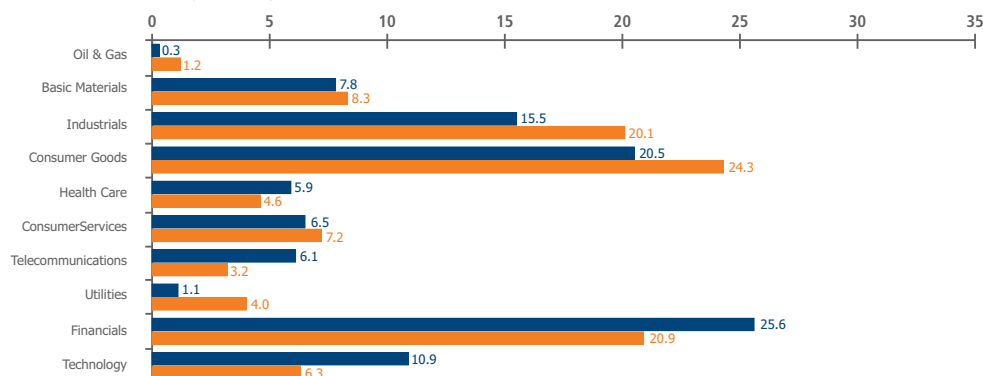
- FTSE4Good US Index
- FTSE US Index

Europe Industry Weights (%)



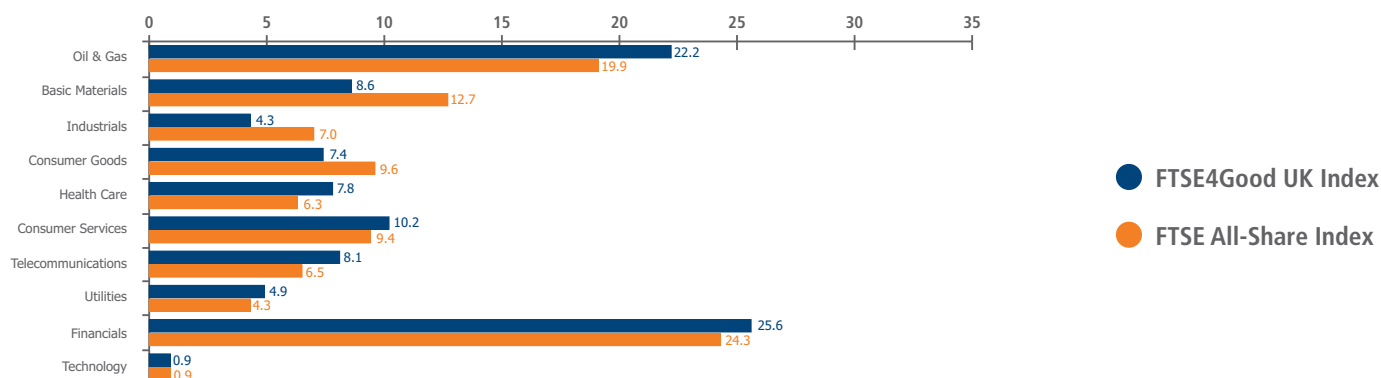
- FTSE4Good Europe Index
- FTSE Developed Europe Index

Japan Industry Weights (%)

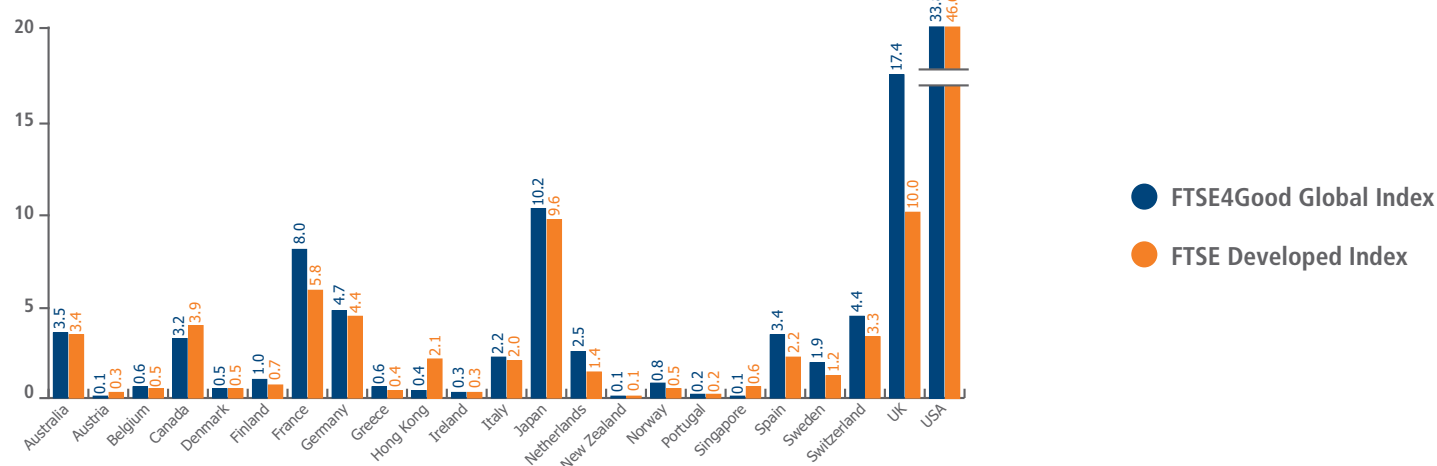


- FTSE4Good Japan Index
- FTSE Japan Index

UK Industry Weights (%)



FTSE4Good Global Country Weights (%)



Top 10 Stocks by Investable Market Capitalisation

FTSE4Good Global Index	Mkt Cap (USDbn)	Wgt (%)	FTSE4Good US Index	Mkt Cap (USDbn)	Wgt (%)
Microsoft Corp	265.5	1.9	Microsoft Corp	265.5	5.6
AT&T	237.0	1.7	AT&T	237.0	5.0
BP	226.9	1.6	Procter & Gamble	203.3	4.3
Total	208.6	1.5	Johnson & Johnson	188.1	3.9
Procter & Gamble	203.3	1.4	Apple Inc.	166.4	3.5
HSBC Hldgs	202.7	1.4	Cisco Systems	159.3	3.3
Johnson & Johnson	188.1	1.3	Bank of America	151.6	3.2
Vodafone Group	169.1	1.2	Google	135.6	2.8
Apple Inc.	166.4	1.2	Intel Corp	132.8	2.8
Cisco Systems	159.3	1.1	Coca-Cola	132.6	2.8

FTSE4Good Europe Index	Mkt Cap (EURbn)	Wgt (%)	FTSE4Good Japan Index	Mkt Cap (JPYbn)	Wgt (%)
BP	145.7	3.3	Mitsubishi UFJ Financial	11,601.2	7.7
Total	134.2	3.0	Canon	7,574.9	5.0
HSBC Hldgs	130.1	2.9	Sumitomo Mitsui Financial Group	6,959.6	4.6
Vodafone Group	108.6	2.5	Matsushita Electric Ind	5,875.0	3.9
Royal Dutch Shell A	98.2	2.2	Sony Corp	5,265.3	3.5
Telefonica	88.1	2.0	Mitsubishi Corp	4,578.8	3.0
Banco Santander S.A.	84.1	1.9	Takeda Pharmaceutical	4,075.1	2.7
Novartis (REGD)	78.8	1.8	Nomura Holdings	3,515.7	2.3
Roche Hldgs (GENUS)	77.8	1.8	Mitsui & Co	3,465.6	2.3
Rio Tinto	77.1	1.7	NTT Docomo	3,083.1	2.0

FTSE4Good UK Index	Mkt Cap (GBPbn)	Wgt (%)
BP	114.6	8.6
HSBC Hldgs	102.3	7.7
Vodafone Group	85.4	6.4
Royal Dutch Shell A	77.2	5.8
Rio Tinto	60.6	4.5
GlaxoSmithKline	60.3	4.5
Royal Dutch Shell B	58.2	4.4
BG Group	42.7	3.2
BHP Billiton	42.2	3.2
Royal Bank Of Scotland Group	37.1	2.8

Sources: FTSE Group and Thomson Datastream.
For more information please contact info@ftse.com

© FTSE International Limited ("FTSE") 2008. All rights reserved.

"FTSE" and "FTSE4Good" are trade and service marks of the London Stock Exchange Plc and The Financial Times Limited and are used by FTSE licence. "All-Share" is a trade and service mark of FTSE. All rights in and to the FTSE4Good Index Series vest within in FTSE and/or its licensors (including Euronext N.V.). All information is provided for information purposes only and no responsibility or liability can be accepted by FTSE and/or its licensors for any errors, inaccuracies and/or omissions or for any loss from use of this publication. No part of this publication may be reproduced, stored in a retrieval system or transmitted by any other form or means whether electronic, mechanical, photocopying, recording or otherwise without the prior written consent of FTSE. The Industry Classification Benchmark ("ICB") is a joint product of FTSE and Dow Jones & Company, Inc ("Dow Jones"). "Dow Jones" and "DJ" are trade and service marks of Dow Jones. FTSE and Dow Jones do not accept any liability to any person for any loss or damage arising out of any error or omission in the ICB. Distribution of FTSE index values and the use of FTSE indices to create financial products requires a licence from FTSE.